

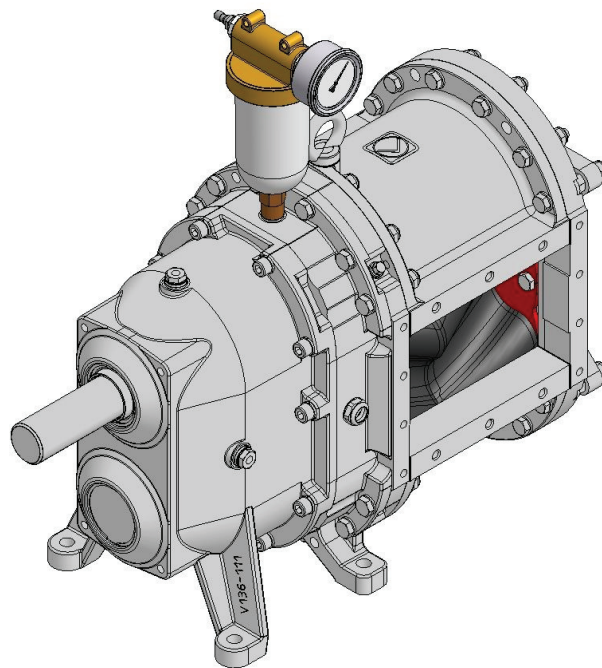


Spare Parts List

Rotary Lobe Pump

VX136QVVA

ENGINEERED TO WORK



Issuer

Hugo Vogelsang Maschinenbau GmbH
Holthöge 10-14
49632 Essen/Oldb.

Phone: +49 54 34 83 0
Fax: +49 54 34 83 10

vogelsang-gmbh.com
info@vogelsang-gmbh.com

In the absence of express, written authorisation from the issuer, the reproduction or partial reproduction of this document in any form is prohibited.

We reserve the right to make technical modifications to the diagrams and information presented in this document in the event that such modifications become necessary for the enhancement of the machine.

© 2016 Hugo Vogelsang Maschinenbau GmbH

Registered trademarks of Vogelsang

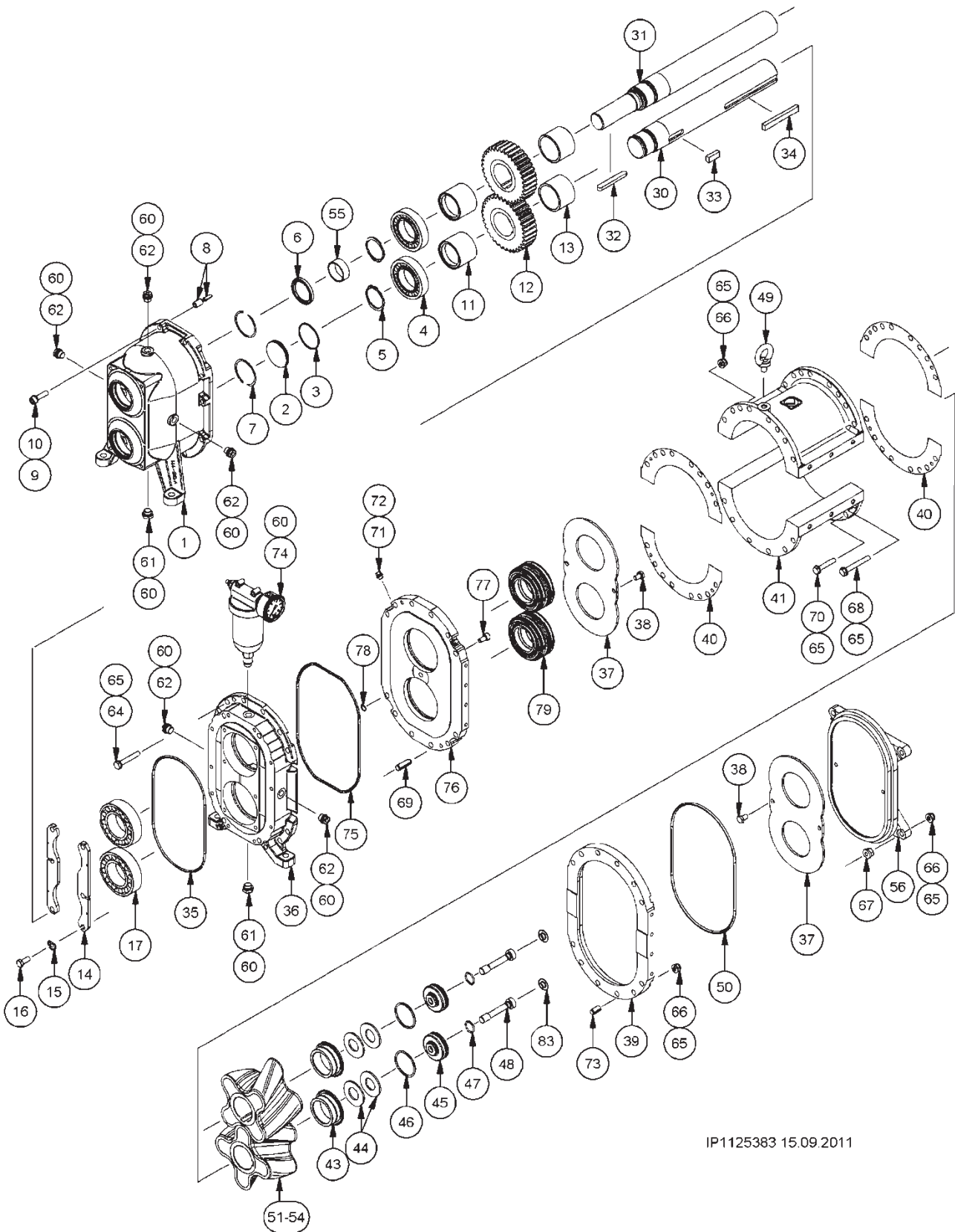
Vogelsang, RotaCut, PreMix, HiFlo, ACC, CFC, BioCrack, XTill, EnergyJet and BioCut are registered trademarks of Hugo Vogelsang Maschinenbau GmbH.

The registered trademarks are not always designated with an ® symbol in this document.

Contents

Exploded view	4
Gearbox housing and accessories	5
Position 1-17	5
PTO shaft	5
Position 30/ 31	5
Motor shaft.....	5
Position 30-32	5
Fitting key	6
Position 33-34	6
Bearing seal housing + accessories	6
Position 35-36	6
Wear plate	6
Position 37-38	6
Cover flange	6
Position 39	6
Gasket for pump housing segment	6
Position 40	6
Pump housing segment.....	7
Position 41	7
Hexagon nut	7
Position 42	7
Preload	8
Position 43-48	8
Lifting eye bolt.....	8
Position 49	8
O-ring	8
Position 50	8
Rotary lobes	9
HiFlo	9
Position 51+54	9
Rotary lobes; bi-lobe.....	12
Position 51	12
Solid material rotary lobes	13
HiFlo	13
Position 51+54	13
O-ring for solid material rotary lobes	13
Position 52-53	13
Cover and accessories	14
Position 54-56	14
Bolts and accessories	14
Position 59-73	14
Buffer chamber enlargement	14
Position 74	14
Intermediate flange	14
Position 75-78	14
Cartridge mechanical seal.....	15
Pos. 79.....	15
"Loose parts" for Cartridge mechanical seal	15
Accessories	15
Position 83	15
Component mechanical seal.....	16
Pos. 200-213.....	16
Tools.....	17
Operating material	17
Material for connectors.....	17
Required spare parts for rotary lobe change.....	18
Necessary spare parts for Cartridge mechanical seal change	19
Necessary spare parts for wear part replacement with Cartridge mechanical seal	20
Necessary spare parts for component mechanical seal change	21
Necessary spare parts for wear part replacement with component mechanical seal	22

Exploded view



IP1125383 15.09.2011

Gearbox housing and accessories

Position 1-17

Pos.	Part number	Description	Dimensions	Notes	Qty.	70	105	140	210
1	PGP.B111.T1	Gearbox housing				1	1	1	1
	PGP.B111.T3	Gearbox housing		For hydraulic motor					
2	DOR.086	O-ring	59 x 3	NBR; for motor shaft		1	1	1	1
	DOR.086.VI	O-ring	59 x 3	FPM; for motor shaft					
3	PRS.B108	Plug disk for gearbox housing		For motor shaft		1	1	1	1
4	NLG.029	Cylindrical roller bearing	ø55 x ø100			2	2	2	2
5	NSR.010	Retaining ring	AS 55 x 3	DIN 471		2	2	2	2

For motor shaft

6	DWD.060.HNB	Radial shaft seal ring	50 x 65 x 7	HNBR		1	1	1	1
	DWD.058.VI	Radial shaft seal ring	50 x 65 x 7	FPM					

For PTO shaft

6	DWD.060.HNB	Radial shaft seal ring	50 x 65 x 7	HNBR		2	2	2	2
	DWD.058.VI	Radial shaft seal ring	50 x 65 x 7	FPM					
7	NSR.034	Multi-disc ring	65 x 3.8 x 0.82			2	2	2	2
8	NSP.023	Spring pin	13 x 22	ISO 8752		4	4	4	4
	NSP.025	Spring pin	8 x 24	ISO 8752					
9	NFR.003	Lock washer	ø10	DIN 127		14	10	10	10
10	NSI.001	Cylinder head bolt	M10 x 40	DIN 912		10	10	10	10
11	PRS.B006	Spacer sleeve		Floating bearing		2	2	2	2
12	PZH.003	Gear				2	2	2	2
13	PRS.B005	Distance sleeve		Fixed bearing		2	2	2	2
14	PFL.B010	Fixing sheet for bearing				2	2	2	2
15	NUS.066	Locking washer	10.5 mm	DIN 432		6	6	6	6
16	NSK.027	Hexagon head bolt	M10 x 25	DIN 933		6	6	6	6
17	NLG.026	Spherical roller bearing	22212 E1			2	2	2	2
	NLG.026.T1	Spherical roller bearing	22212 E	(Option)					

PTO shaft

Position 30/ 31

Pos.	Part number	Description	Dimensions	Notes	Qty.	70	105	140	210
30/31	PWQ.109.N1	PTO shaft	VX136-70-S-Q			2	-	-	-
	PWQ.110.N1	PTO shaft	VX136-105-S-Q			-	2	-	-
	PWQ.111.N1	PTO shaft	VX136-140-S-Q			-	-	2	-
	PWQ.112.N1	PTO shaft	VX136-210-S-Q			-	-	-	2

Motor shaft

Position 30-32

Pos.	Part number	Description	Dimensions	Notes	Qty.	70	105	140	210
30	PWQ.105.N1	Motor shaft	VX136-70-MK-Q	Short		1	-	-	-
	PWQ.106.N1	Motor shaft	VX136-105-MK-Q	Short		-	1	-	-
	PWQ.107.N1	Motor shaft	VX136-140-MK-Q	Short		-	-	1	-
	PWQ.108.N1	Motor shaft	VX136-210-MK-Q	Short		-	-	-	1
31	PWQ.101.N1	Motor shaft	VX136-70-ML-Q	Long		1	-	-	-
	PWQ.102.N1	Motor shaft	VX136-105-ML-Q	Long		-	1	-	-
	PWQ.103.N1	Motor shaft	VX136-140-ML-Q	Long		-	-	1	-
	PWQ.104.N1	Motor shaft	VX136-210-ML-Q	Long		-	-	-	1
	PWQ.105.N1.H	Hollow shaft ⁽⁷⁾	VX136-70-MH-Q			1	-	-	-
	PWQ.106.N1.H	Hollow shaft ⁽⁷⁾	VX136-105-MH-Q			-	1	-	-
	PWQ.107.N1.H	Hollow shaft ⁽⁷⁾	VX136-140-MH-Q			-	-	1	-
PWQ.108.N1.H	Hollow shaft ⁽⁷⁾	VX136-210-MH-Q			-	-	-	1	
32	NPF.046	Fitting key	A 12 x 8 x 90	For motor shaft long		1	1	1	1

⁽⁷⁾ for hydraulic motor

Fitting key

Position 33-34

Pos.	Part number	Description	Dimensions	Notes	Qty.	70	105	140	210
33	NPF.022	Fitting key	B 14 x 9 x 35	DIN 6885		2	2	2	2
34	NPF.010	Fitting key	B 14 x 9 x 28			2	-	-	-
	NPF.011	Fitting key	B 14 x 9 x 56			-	2	-	2
	NPF.012	Fitting key	B 14 x 9 x 110			-	-	-	2
	NPF.013	Fitting key	B 14 x 9 x 100			-	-	2	-

Bearing seal housing + accessories

Position 35-36

Pos.	Part number	Description	Dimensions	Notes	Qty.	70	105	140	210
35	DOR.035	O-ring	245 x 5	NBR		1	1	1	1
	DOR.035.VI	O-ring	245 x 5	FPM					
36	PGP.B110.T2	Bearing seal housing				1	1	1	1

Wear plate

Position 37-38

Pos.	Part number	Description	Dimensions	Notes	Qty.	70	105	140	210
37	PFL.B009.E	Wear plate		1.4571		2	2	2	2
	PFL.B009.E.G2	Wear plate		Plasma hardened					
	PFL.B009.E.G1	Wear plate		Tungsten carbide coated + shim					

For wear plate tungsten carbide coated

37	DAD.B004	Shim	0.3 mm	PA6 Polyamide		2	2	2	2
	DAD.B005	Shim	0.5 mm	PA6 Polyamide		2	2	2	2
38	NSK.025.EE	Hexagon head bolt	M10 x 16	DIN 933		4	4	4	4

Cover flange

Position 39

Pos.	Part number	Description	Dimensions	Notes	Qty.	70	105	140	210
39	PGP.B004.N1.E	Cover flange				1	1	1	1

Gasket for pump housing segment

Position 40

Pos.	Part number	Description	Dimensions	Notes	Qty.	70	105	140	210
40	DAD.007	Gasket		Asbestos-free		4	4	4	4

Pump housing segment

Position 41

Pos.	Part number	Description	Dimensions	Notes	Qty.	70	105	140	210
------	-------------	-------------	------------	-------	------	----	-----	-----	-----



41	PGP.015.E	Pump housing segment	70	1.4581		2	-	-	-
	PGP.100.E	Pump housing segment	105	1.4581		-	2	-	-
	PGP.013.E	Pump housing segment	140	1.4581		-	-	2	-
	PGP.014.E	Pump housing segment	210	1.4581		-	-	-	2
	PGP.015.E.G1	Pump housing segment	70	Tungsten carbide coated		2	-	-	-
	PGP.100.E.G1	Pump housing segment	105	Tungsten carbide coated		-	2	-	-
	PGP.013.E.G1	Pump housing segment	140	Tungsten carbide coated		-	-	2	-
	PGP.014.E.G1	Pump housing segment	210	Tungsten carbide coated		-	-	-	2
	PGP.013. E.G2	Pump housing segment	140	Plasma-hardened		-	-	2	-



Injection S

41	PGP.B122.E	Pump housing segment	70	1.4581		2	-	-	-
	PGP.B123.E	Pump housing segment	105	1.4581		-	2	-	-
	PGP.B120.E	Pump housing segment	140	1.4581		-	-	2	-
	PGP.B121.E	Pump housing segment	210	1.4581		-	-	-	2
	PGP.B122.E.G1	Pump housing segment	70	Tungsten carbide coated		2	-	-	-
	PGP.B123.E.G1	Pump housing segment	105	Tungsten carbide coated		-	2	-	-
	PGP.B120.E.G1	Pump housing segment	140	Tungsten carbide coated		-	-	2	-
	PGP.B121.E.G1	Pump housing segment	210	Tungsten carbide coated		-	-	-	2



Injection A

41	PGP0153	Pump housing segment	70	1.4581		2	-	-	-
	PGP0144	Pump housing segment	105	1.4581		-	2	-	-
	PGP0128	Pump housing segment	140	1.4581		-	-	2	-
	PGP0209	Pump housing segment	140	Tungsten carbide coated		-	-	2	-

Hexagon nut

Position 42

Pos.	Part number	Description	Dimensions	Notes	Qty.	70	105	140	210
42	NMS.003	Hexagon nut	M10			4	-	-	-

Preload

Position 43-48

Pos.	Part number	Description	Dimensions	Notes	Qty.	70	105	140	210
43	PRS.B106.E	Sealing ring				2 0 ⁽⁵⁾	2 0 ⁽⁵⁾	2 0 ⁽⁵⁾	2 0 ⁽⁵⁾
44	NTF.005	Spring washer	63 x 31 x 3.5	DIN 2093		4	4	4	4
	NTF.002 ⁽⁵⁾	Spring washer ⁽⁵⁾	71 x 36 x 4	DIN 2093					
45	PRS.B107.E	Pressure disc				2	2	2	2
	PRS.B008.E ⁽⁵⁾	Pressure disc ⁽⁵⁾							
46	DOR.084	O-ring	58 x 4	NBR		2	2	2	2
	DOR.084.EP	O-ring	58 x 4	EPDM					
	DOR.084.VI	O-ring	58 x 4	FPM					
	DOR.084.PT	O-ring	58 x 4	Silicone FEP coated					
	DOR.043 ⁽⁵⁾	O-ring	64 x 4	NBR					
	DOR.043.EP ⁽⁵⁾	O-ring	64 x 4	EPDM					
	DOR.043.VI ⁽⁵⁾	O-ring	64 x 4	FPM					
	DOR.043.PT ⁽⁵⁾	O-ring	64 x 4	Silicone FEP coated					
47	DOR.021	O-ring	24 x 3	NBR		2	2	2	2
	DOR.021.EP	O-ring	24 x 3	EPDM					
	DOR.021.VI	O-ring	24 x 3	FPM					
	DOR.021.PT	O-ring	24 x 3	Silicone FEP coated					
48	PRS.105.E	Strain bolt	M16 x 90			2	2	2	2
	PRS.117.E ⁽⁵⁾	Strain bolt	M16 x 80						

⁽⁵⁾ for solid material lobes without sealing ring Pos. 43

Lifting eye bolt

Position 49

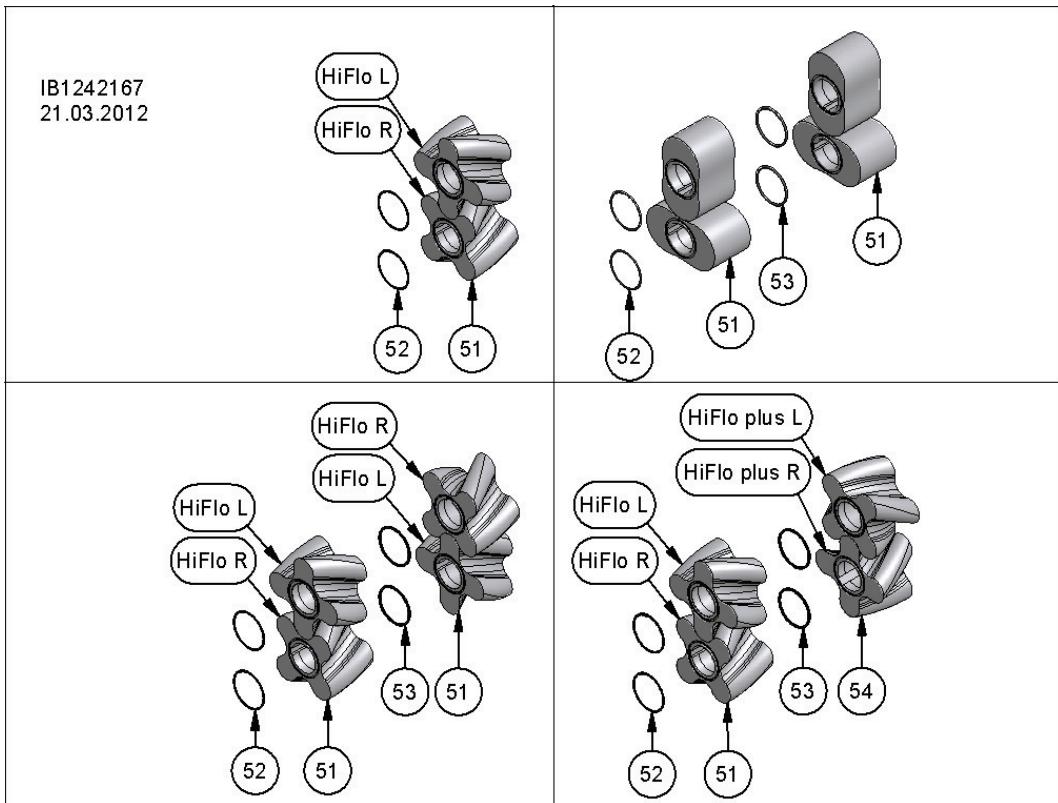
Pos.	Part number	Description	Dimensions	Notes	Qty.	70	105	140	210
49	NKS.006	Lifting eye bolt	M12	DIN 580		1	1	1	1

O-ring

Position 50

Pos.	Part number	Description	Dimensions	Notes	Qty.	70	105	140	210
50	DOR.051	O-ring	280 x 6	NBR		1	1	1	1
	DOR.051.EP	O-ring	280 x 6	EPDM					
	DOR.051.VI	O-ring	280 x 6	FPM					
	DOR.051.PT	O-ring	280 x 6	Silicone FEP coated					

Rotary lobes



HiFlo
Position 51+54
HiFlo SBR

Pos.	Part number	Description	Dimensions	Notes	Qty.	70	105	140	210
51	PKB.B101.TL	Rotary lobe	70-4K45-L	SBR		1	-	-	-
	PKB.B101.TR	Rotary lobe	70-4K45-R	SBR		1	-	-	-
	PKB.B102.TL	Rotary lobe	105-4K45-L	SBR		-	1	-	2 (1)
	PKB.B102.TR	Rotary lobe	105-4K45-R	SBR		-	1	-	2 (1)
	PKB.B103.TL	Rotary lobe	140-4K45-L	SBR		-	-	1	-
	PKB.B103.TR	Rotary lobe	140-4K45-R	SBR		-	-	1	-
54		Rotary lobe	105-4K45-L HiFloplus	SBR		-	-	-	(1)
		Rotary lobe	105-4K45-R HiFloplus	SBR		-	-	-	(1)

() quantity for HiFlo plus

HiFlo NBR

Pos.	Part number	Description	Dimensions	Notes	Qty.	70	105	140	210
51	PKB.B101.TL.NB	Rotary lobe	70-4K45-L	NBR		1	-	-	-
	PKB.B101.TR.NB	Rotary lobe	70-4K45-R	NBR		1	-	-	-
	PKB.B102.TL.NB	Rotary lobe	105-4K45-L	NBR		-	1	-	2 (1)
	PKB.B102.TR.NB	Rotary lobe	105-4K45-R	NBR		-	1	-	2 (1)
	PKB.B103.TL.NB	Rotary lobe	140-4K45-L	NBR		-	-	1	-
	PKB.B103.TR.NB	Rotary lobe	140-4K45-R	NBR		-	-	1	-
51	PKB.B101.TL.NBW	Rotary lobe	70-4K45-L	NBR white		1	-	-	-
	PKB.B101.TR.NBW	Rotary lobe	70-4K45-R	NBR white		1	-	-	-
	PKB.B102.TL.NBW	Rotary lobe	105-4K45-L	NBR white		-	1	-	2 (1)
	PKB.B102.TR.NBW	Rotary lobe	105-4K45-R	NBR white		-	1	-	2 (1)
	PKB.B103.TL.NBW	Rotary lobe	140-4K45-L	NBR white		-	-	1	-
	PKB.B103.TR.NBW	Rotary lobe	140-4K45-R	NBR white		-	-	1	-
54	PKB0011	Rotary lobe	105-4K45-L HiFloplus	NBR		-	-	-	(1)
	PKB0012	Rotary lobe	105-4K45-R HiFloplus	NBR		-	-	-	(1)
		Rotary lobe	105-4K45-L HiFloplus	NBR white		-	-	-	(1)
		Rotary lobe	105-4K45-R HiFloplus	NBR white		-	-	-	(1)

HiFlo EPDM

Pos.	Part number	Description	Dimensions	Notes	Qty.	70	105	140	210
51	PKB.B101.TL.SL	Rotary lobe	70-4K45-L	EPDM-SL		1	-	-	-
	PKB.B101.TR.SL	Rotary lobe	70-4K45-R	EPDM-SL		1	-	-	-
	PKB.B102.TL.SL	Rotary lobe	105-4K45-L	EPDM-SL		-	1	-	2 (1)
	PKB.B102.TR.SL	Rotary lobe	105-4K45-R	EPDM-SL		-	1	-	2 (1)
	PKB.B103.TL.SL	Rotary lobe	140-4K45-L	EPDM-SL		-	-	1	-
	PKB.B103.TR.SL	Rotary lobe	140-4K45-R	EPDM-SL		-	-	1	-
51	PKB.B101.TL.EPW	Rotary lobe	70-4K45-L	EPDM white		1	-	-	-
	PKB.B101.TR.EPW	Rotary lobe	70-4K45-R	EPDM white		1	-	-	-
	PKB.B102.TL.EPW	Rotary lobe	105-4K45-L	EPDM white		-	1	-	2 (1)
	PKB.B102.TR.EPW	Rotary lobe	105-4K45-R	EPDM white		-	1	-	2 (1)
	PKB.B103.TL.EPW	Rotary lobe	140-4K45-L	EPDM white		-	-	1	-
	PKB.B103.TR.EPW	Rotary lobe	140-4K45-R	EPDM white		-	-	1	-
54		Rotary lobe	105-4K45-L HiFloplus	EPDM-SL		-	-	-	(1)
		Rotary lobe	105-4K45-R HiFloplus	EPDM-SL		-	-	-	(1)
		Rotary lobe	105-4K45-L HiFloplus	EPDM white		-	-	-	(1)
		Rotary lobe	105-4K45-R HiFloplus	EPDM white		-	-	-	(1)

HiFlo FPM

Pos.	Part number	Description	Dimensions	Notes	Qty.	70	105	140	210
51	PKB.B101.TL.VI	Rotary lobe	70-4K45-L	FPM ⁽¹⁾		1	-	-	-
	PKB.B101.TR.VI	Rotary lobe	70-4K45-R	FPM ⁽¹⁾		1	-	-	-
	PKB.B102.TL.VI	Rotary lobe	105-4K45-L	FPM ⁽¹⁾		-	1	-	2 (1)
	PKB.B102.TR.VI	Rotary lobe	105-4K45-R	FPM ⁽¹⁾		-	1	-	2 (1)
	PKB.B103.TL.VI	Rotary lobe	140-4K45-L	FPM ⁽¹⁾		-	-	1	-
	PKB.B103.TR.VI	Rotary lobe	140-4K45-R	FPM ⁽¹⁾		-	-	1	-
54		Rotary lobe	105-4K45-L HiFloplus	FPM ⁽¹⁾		-	-	-	(1)
		Rotary lobe	105-4K45-R HiFloplus	FPM ⁽¹⁾		-	-	-	(1)

⁽¹⁾ max. 6 bar [87 psi], please pay attention to the admissible pressure of pump!

HiFlo WEROBUST

Pos.	Part number	Description	Dimensions	Notes	Qty.	70	105	140	210
51	PKB.B101.TL.PU	Rotary lobe	70-4K45-L	WEROBUST ⁽²⁾		1	-	-	-
	PKB.B101.TR.PU	Rotary lobe	70-4K45-R	WEROBUST ⁽²⁾		1	-	-	-
	PKB.B102.TL.PU	Rotary lobe	105-4K45-L	WEROBUST ⁽²⁾		-	1	-	2 (1)
	PKB.B102.TR.PU	Rotary lobe	105-4K45-R	WEROBUST ⁽²⁾		-	1	-	2 (1)
	PKB.B103.TL.PU	Rotary lobe	140-4K45-L	WEROBUST ⁽²⁾		-	-	1	-
	PKB.B103.TR.PU	Rotary lobe	140-4K45-R	WEROBUST ⁽²⁾		-	-	1	-
54		Rotary lobe	105-4K45-L HiFloplus	WEROBUST ⁽²⁾		-	-	-	(1)
		Rotary lobe	105-4K45-R HiFloplus	WEROBUST ⁽²⁾		-	-	-	(1)

⁽²⁾ Attention! Usable up to 50°C medium temperature, only!

HiFlo CSM Hypalon

Pos.	Part number	Description	Dimensions	Notes	Qty.	70	105	140	210
51	PKB.B101.TL.CSM	Rotary lobe	70-4K45-L	CSM		1	-	-	-
	PKB.B101.TR.CSM	Rotary lobe	70-4K45-R	CSM		1	-	-	-
	PKB.B102.TL.CSM	Rotary lobe	105-4K45-L	CSM		-	1	-	2 (1)
	PKB.B102.TR.CSM	Rotary lobe	105-4K45-R	CSM		-	1	-	2 (1)
54	PBK0039	Rotary lobe	105-4K45-L HiFloplus	CSM		-	-	-	(1)
	PKB0040	Rotary lobe	105-4K45-R HiFloplus	CSM		-	-	-	(1)

HiFlo PUR

Pos.	Part number	Description	Dimensions	Notes	Qty.	70	105	140	210
51	PKD0099	Rotary lobe	105 3F60L	PUR		-	1	-	2
	PKD0100	Rotary lobe	105 3F60R	PUR		-	1	-	2
	PKD0097	Rotary lobe	140 3F60L	PUR		-	-	1	-
	PKD0098	Rotary lobe	140 3F60R	PUR		-	-	1	-

() quantity for HiFlo plus

Rotary lobes; bi-lobe

Position 51

Pos.	Part number	Description	Dimensions	Notes	Qty.	70	105	140	210
51	PKB.B018.Q	Rotary lobe; bi-lobe	70	NBR		2	-	-	-
	PKB.B035.Q	Rotary lobe; bi-lobe	105	NBR		-	2	-	4
	PKB.B028.Q	Rotary lobe; bi-lobe	140	NBR		-	-	2	-
	PKB.B018.QF	Rotary lobe; bi-lobe	70	NBR large rubber lagging		2	-	-	-
	PKB.B035.QF	Rotary lobe; bi-lobe	105	NBR large rubber lagging		-	2	-	4
	PKB.B018.QW	Rotary lobe; bi-lobe	70	NBR white		2	-	-	-
	PKB.B028.QW	Rotary lobe; bi-lobe	140	NBR white		-	-	2	-
	PKB.B016.Q	Rotary lobe; bi-lobe	70	SBR 70		2	-	-	-
	PKB.B033.Q	Rotary lobe; bi-lobe	105	SBR 70		-	2	-	4
	PKB.B026.Q	Rotary lobe; bi-lobe	140	SBR 70		-	-	2	-
	PKB.B021.Q.SL	Rotary lobe; bi-lobe	70	EPDM-SL		2	-	-	-
	PKB.B034.Q.SL	Rotary lobe; bi-lobe	105	EPDM-SL		-	2	-	4
	PKB.B030.Q.SL	Rotary lobe; bi-lobe	140	EPDM-SL		-	-	2	-
	PKB.B022.Q	Rotary lobe; bi-lobe	70	FPM ⁽¹⁾		2	-	-	-
	PKB.B037.Q	Rotary lobe; bi-lobe	105	FPM ⁽¹⁾		-	2	-	4
	PKB.B031.Q	Rotary lobe; bi-lobe	140	FPM ⁽¹⁾		-	-	2	-
	PKB.B023.Q	Rotary lobe; bi-lobe	70	WEROBUST ⁽²⁾		2	-	-	-
	PKB.B036.Q	Rotary lobe; bi-lobe	105	WEROBUST ⁽²⁾		-	2	-	4
PKB.B025.Q	Rotary lobe; bi-lobe	140	WEROBUST ⁽²⁾		-	-	2	-	
51	PKB.B041.N1.E	Rotary lobe; bi-lobe	70	1.4571 ⁽³⁾		2	-	4	-
	PKB.B042.N1.E	Rotary lobe; bi-lobe	105	1.4571 ⁽³⁾		-	2	-	4
	PKB.B023.Q	Rotary lobe; bi-lobe	70	POM ⁽³⁾		2	-	-	-
	PKB.B036.Q	Rotary lobe; bi-lobe	105	POM ⁽³⁾		-	2	-	4
	PKB.B025.Q	Rotary lobe; bi-lobe	140	POM ⁽³⁾		-	-	2	-

⁽¹⁾ max. 6 bar [87 psi], please pay attention to the admissible pressure of pump!

⁽²⁾ Attention! Usable up to 50°C medium temperature, only!

⁽³⁾ + O-ring for solid material lobe

Solid material rotary lobes

HiFlo

Position 51+54

Pos.	Part number	Description	Dimensions	Notes	Qty.	70	105	140	210
51	PKB.B104.N1.TLE	Rotary lobe	70-4K45-L HiFlo	1.4571 ⁽³⁾		1	-	-	-
	PKB.B104.N1.TRE	Rotary lobe	70-4K45-R HiFlo	1.4571 ⁽³⁾		1	-	-	-
	PKB.B105.N1.TLE	Rotary lobe	105-4K45-L HiFlo	1.4571 ⁽³⁾		-	1	-	2 (1)
	PKB.B105.N1.TRE	Rotary lobe	105-4K45-R HiFlo	1.4571 ⁽³⁾		-	1	-	2 (1)
	PKB.B106.N1.TLE	Rotary lobe	140-4K45-L HiFlo	1.4571 ⁽³⁾		-	-	1	-
	PKB.B106.N1.TRE	Rotary lobe	140-4K45-R HiFlo	1.4571 ⁽³⁾		-	-	1	-
51	PKB.B101.TL.POM	Rotary lobe	70-4K45-L HiFlo	POM ⁽³⁾		1	-	-	-
	PKB.B101.TR.POM	Rotary lobe	70-4K45-R HiFlo	POM ⁽³⁾		1	-	-	-
	PKB.B102.TL.POM	Rotary lobe	105-4K45-L HiFlo	POM ⁽³⁾		-	1	-	2 (1)
	PKB.B102.TR.POM	Rotary lobe	105-4K45-R HiFlo	POM ⁽³⁾		-	1	-	2 (1)
54		Rotary lobe ⁽³⁾	105-4K45-L HiFlo <i>plus</i>	1.4571 ⁽³⁾		-	-	-	(1)
		Rotary lobe ⁽³⁾	105-4K45-R HiFlo <i>plus</i>	1.4571 ⁽³⁾		-	-	-	(1)
		Rotary lobe ⁽³⁾	105-4K45-L HiFlo <i>plus</i>	POM ⁽³⁾		-	-	-	(1)
		Rotary lobe ⁽³⁾	105-4K45-R HiFlo <i>plus</i>	POM ⁽³⁾		-	-	-	(1)

⁽³⁾ + O-ring for solid material lobe

() quantity for HiFlo *plus*

O-ring for solid material rotary lobes

Position 52-53

Pos.	Part number	Description	Dimensions	Notes	Qty.	70	105	140	210
52	DOR.039	O-ring ⁽⁵⁾	80 x 2,5	NBR		2	2	2	2
	DOR.039.EP	O-ring ⁽⁵⁾	80 x 2,5	EPDM					
	DOR.039.VI	O-ring ⁽⁵⁾	80 x 2,5	FPM					
	DOR.039.PT	O-ring ⁽⁵⁾	80 x 2,5	Silikon FEP coated					
53	DOR.162	O-ring ⁽⁵⁾	80 x 4	NBR		-	-	-	2
	DOR.162.EP	O-ring ⁽⁵⁾	80 x 4	EPDM					
	DOR.162.VI	O-ring ⁽⁵⁾	80 x 4	FPM					
	DOR.162.PT	O-ring ⁽⁵⁾	80 x 4	Silikon FEP coated					

⁽⁵⁾ for solid material lobes

Cover and accessories

Position 54-56

Pos.	Part number	Description	Dimensions	Notes	Qty.	70	105	140	210
55	NIR.019	Sleeve	JR 45 x 50 x 20	For motor shaft		1	1	1	1
				For PTO shaft		2	2	2	2
56	PGP.B005.T1.E	Cover plate				1	1	1	1

Bolts and accessories

Position 59-73

Pos.	Part number	Description	Dimensions	Notes	Qty.	70	105	140	210
60	DKR.005	Copper ring	C16 x 22 x 2	DIN 7603		8	8	8	8
61	NSK.088	Screw plug	M16 x 1.5	Magnetic		2	2	2	2
62	NSK.081	Screw plug	M16 x 1.5	DIN 910		5	5	5	5
64	NSK.072	Hexagon head bolt	M10 x 65	DIN 931		12	12	12	12
65	NUS.004	Shim	A 10.5 x 20 x 2	DIN 125		44	48	48	48
66	NMK.001	Hexagon nut	M10	DIN 985 self-locking		24	24	24	24
67	PRS.B023	Distance nut	M10			4	4	4	4
68	NSK.204	Hexagon head bolt	M10 x 80	DIN 933		-	4	4	4
	NGS.008	Threaded rod	M10 x 100	DIN 976		4	-	-	-
69	NSP.004	Spring pin	13 x 40	DIN 7346		4	4	4	4
70	NSK.006	Hexagon head bolt	M10 x 55	DIN 933		8	8	8	8
71	NSK.080.EE	Screw plug	M 10 x 1	Pos.76		4	4	4	4
72	DKR.001	Copper ring	C 10 x 16 x 1	> PGP.B112.N1.E		4	4	4	4
73	NSP.013	Spring pin	13 x 24	ISO 13337		4	4	4	4

Buffer chamber enlargement

Position 74

Pos.	Part number	Description	Dimensions	Notes	Qty.	70	105	140	210
74	PSG.014	Buffer fluid tank		Pressurised		1	1	1	1
	PSG.014.T1	Quench fluid tank		Ventilated (Option)					
	PSV.002.N1	Pressure valve		(Option)					

Intermediate flange

Position 75-78

Pos.	Part number	Description	Dimensions	Notes	Qty.	70	105	140	210
75	DOR0049	O-ring	282 x 4	NBR		1	1	1	1
	DOR0050	O-ring	282 x 4	FPM					
76	PGP0272	Intermediate flange				1	1	1	1
	PGP.B112.N1.E	Intermediate flange		+ Pos. 71-72 option: lubricating hole					
77	NSI.096.EE	Hexagon head bolt	M10 x 18	DIN 912		1	1	1	1
78	DOR.040	O-ring	12 x 2	NBR		1	1	1	1
	DOR.040.EP	O-ring	12 x 2	EPDM					
	DOR.040.VI	O-ring	12 x 2	FPM					
	DOR.040.PT	O-ring	12 x 2	Silicone FEP coated					

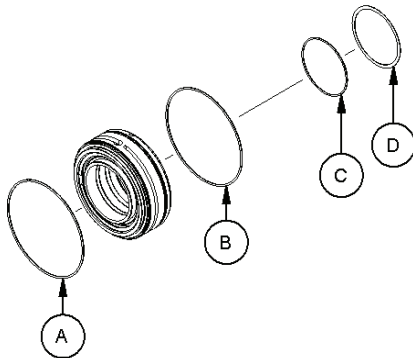
Cartridge mechanical seal

Pos. 79

Pos.	Part number	Description	Dimensions	Notes	Qty.	70	105	140	210
1.4571									
79	PBT.B002.E	Cartridge mechanical seal HD; single mechanical seal		SiSiC/ HNBR		2			
	PBT.B003.E			SiSiC/ FPM					
	PBT.B004.E			Duronit/ HNBR ⁽⁴⁾					
	PBT.B005.E			Duronit/ FPM ⁽⁴⁾					
	PBT.B006.E			SiSiC/ EPDM					
	PBT.B010.E		Cartridge mechanical seal block ring; single mechanical seal		SiSiC/ HNBR				
	PBT.B011.E			SiSiC/ FPM					
	PBT.B012.E			Carbon/ HNBR					
	PBT.B013.E			Carbon/ FPM					
	PBT.B014.E			Carbon/ EPDM					
	PBT.B019.E			Duronit/ HNBR ⁽⁴⁾					
	PBT.B037.E			SiSiC/ EPDM					
	PBT.B040.E			Duronit/ FPM ⁽⁴⁾					

⁽⁴⁾ up to 10 bar [145 psi] real operating pressure

"Loose parts" for Cartridge mechanical seal



Quantity per cartridge

Pos.	Part number	Description	Dimensions	Notes	Qty.
A	DOR.085	O-ring	104 x 3	NBR	1
	DOR.085.VI	O-ring	104 x 3	FPM	
B	DOR.085	O-ring	104 x 3	NBR	2
	DOR.085.EP	O-ring	104 x 3	EPDM	
	DOR.085.VI	O-ring	104 x 3	FPM	
	DOR.085.PT	O-ring	104 x 3	Silicone FEP coated	
C	DOR.041	O-ring	60 x 2	NBR	1
	DOR.041.VI	O-ring	60 x 2	FPM	
D	NUS.029	Shim			1

These positions are contained in the Cartridge mechanical seal as "loose parts".

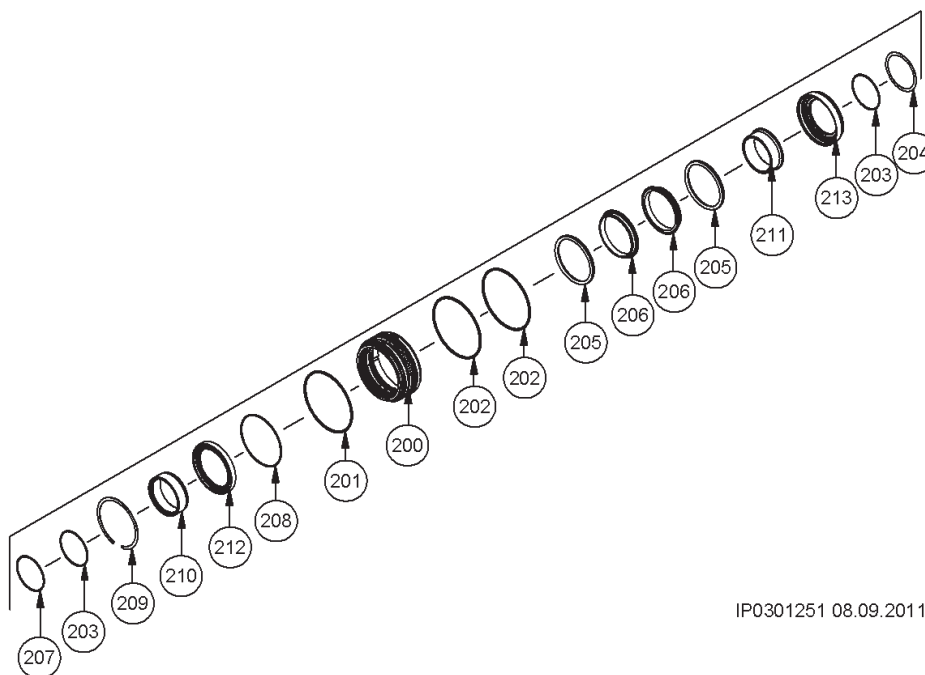
For option component mechanical seal, see pos. 200-213

Accessories

Position 83

Pos.	Part number	Description	Dimensions	Notes	Qty.	70	105	140	210
83	NST.017	Plastic plug for strain screw				2	2	2	2

Component mechanical seal
Pos. 200-213



IP0301251 08.09.2011


Pos.	Part number	Description	Dimensions	Notes	Qty.	70	105	140	210
200	PRS.B105.N2.T1E	Seal carrier				2	2	2	2
201	DOR.085	O-ring	104 x 3	NBR		2	2	2	2
202	DOR.085	O-ring	104 x 3	NBR		4	4	4	4
	DOR.085.EP	O-ring	104 x 3	EPDM					
	DOR.085.VI	O-ring	104 x 3	FPM					
	DOR.085.PT	O-ring	104 x 3	Silicone FEP coated					
203	DOR.041	O-ring	60 x 2	NBR		4	4	4	4
204	NUS.029	Shim				2	2	2	2
205	DOR.034	O-ring	72.5 x 6.5	NBR		4	4	4	4
	DOR.034.EP	O-ring	72.5 x 6.5	EPDM					
	DOR.034.VI	O-ring	72.5 x 6.5	FPM					
	DOR.034.SI	O-ring	72.5 x 6.5	Silicone check resistance!					
206	DGL.B012	Mechanical seal ring		Duronit ⁽⁴⁾		4	4	4	4
	DGL.B012.SC	Mechanical seal ring		SiSiC (silicone carbide)					
207	DOR.005	O-ring	56 x 2	NBR		2	2	2	2
208	DOR.135	O-ring	90 x 2	NBR		2	2	2	2
209	NSR.032	Circlip				2	2	2	2
210	PRS.B103.T1	Rotating ring		For radial shaft seal ring		2	2	2	2
211	PRS.B104	Distance ring				2	2	2	2
212	DWD.065	Mecanisa seal ring	70 x 90 x 10			2	2	2	2
213	PRS.B101.N2.T2E	Adjusting ring				2	2	2	2

⁽⁴⁾ up to 10 bar [145 psi] real operating pressure

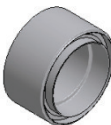
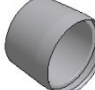
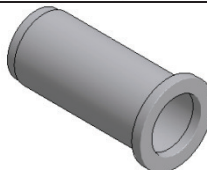
Tools

Pos.	Part number	Description	Dimensions	Notes	Qty.	70	105	140	210
	PBA.B001.TK	Rotary lobe puller	70/105			x	x		
	PBA.B001.TL	Rotary lobe puller	140/210					x	x

Cartridge mechanical seal:

	WKZ0172	Tool set		Cartridge mechanical seal			x		
	WKZ0456	Disassembly tool Cartridge mechanical seal		Included in WKZ0172					
	PBA.B020.N1	Tool		Included in WKZ0456				(1)	
	NSI.155	Cylinder head bolt	M 5 x 12					(2)	
	NSK.155	Hexagon head bolt	M 8 x 80					(3)	

Component mechanical seal:

	PBA.B006.N1	Assembly tool		Mechanical seal ring (DGL.B012 pos. 206)					
	PBA.B007.N1	Assembly tool		Shaft (for DWD.065 pos. 212)					
	PBA.B011	Assembly tool		Radial shaft seal ring (for DWD.065 pos. 212)					
	PBA.B033.T1	Multi-purpose tool	→ 70Q-210Q	Cartridge mechanical seal - rotary lobe		x	x	x	x
	WKZ0105	Service tool box	VX136Q						

Operating material

Pos.	Part number	Description	Dimensions	Notes	Qty.	70	105	140	210
	DDM.004	Curil sealing material		For asbestos-free gasket			x		
	BKL.013	WEICONLOCK asbestos-free gasket	AN305-74	For bearing housing				x	
	BSS.008	Grease	Renolit CP	For bearing				x	
	BSS.006	Mineral oil		Titan Gear MP 90				x	

Material for connectors

Pos.	Part number	Description	Dimensions	Notes	Qty.	70	105	140	210
	NSK.027	Hexagon head bolt	M10 x 25	DIN 933		20	24	24	28
	NUS.004	Washer	A10.5 x 20 x 2	DIN 125		20	24	24	28
	PFL.010.E	Flange	70	1.4571		2	-	-	-
	PFL.057.E	Flange	105	1.4571		-	2	-	-
	PFL.005.E	Flange	140	1.4571		-	-	2	
	PFL.006.E	Flange	210	1.4571		-	-	-	2
	DFD.011.P	Flange gasket	70			2	-	-	-
	DFD.033.P	Flange gasket	105			-	2	-	-
	DFD.005.P	Flange gasket	140			-	-	2	-
	DFD.006.P	Flange gasket	210			-	-	-	2

Required spare parts for rotary lobe change

Pos.	Part number	Description	Dimensions	Notes	Qty.	70	105	140	210
34	NPF.010	Fitting key	B 14 x 9 x 28			2	-	-	-
	NPF.011	Fitting key	B 14 x 9 x 56			-	2	-	2
	NPF.012	Fitting key	B 14 x 9 x 110			-	-	-	2
	NPF.013	Fitting key	B 14 x 9 x 100			-	-	2	-
46	DOR.084	O-ring	58 x 4	NBR		2	2	2	2
	DOR.084.EP	O-ring	58 x 4	EPDM					
	DOR.084.VI	O-ring	58 x 4	FPM					
	DOR.084.PT	O-ring	58 x 4	Silicone FEP coated					
	DOR.043 ⁽⁵⁾	O-ring	64 x 4	NBR					
	DOR.043.EP ⁽⁵⁾	O-ring	64 x 4	EPDM					
	DOR.043.VI ⁽⁵⁾	O-ring	64 x 4	FPM					
	DOR.043.PT ⁽⁵⁾	O-ring	64 x 4	Silicone FEP coated					
47	DOR.021	O-ring	24 x 3	NBR		2	2	2	2
	DOR.021.EP	O-ring	24 x 3	EPDM					
	DOR.021.VI	O-ring	24 x 3	FPM					
	DOR.021.PT	O-ring	24 x 3	Silicone FEP coated					
48	PRS.105.E	Strain bolt	M16 x 90			2	2	2	2
	PRS.117.E ⁽⁵⁾	Strain bolt	M16 x 80						
50	DOR.051	O-ring	280 x 6	NBR		1	1	1	1
	DOR.051.EP	O-ring	280 x 6	EPDM					
	DOR.051.VI	O-ring	280 x 6	FPM					
	DOR.051.PT	O-ring	280 x 6	Silicone FEP coated					
51-54		Rotary lobe		See page 10 and follow					
83	NST.017	Plastic plug for strain screw				2	2	2	2

⁽⁵⁾ for solid material lobes without sealing ring Pos. 43

Necessary spare parts for Cartridge mechanical seal change

Pos.	Part number	Description	Dimensions	Notes	Qty.	70	105	140	210
46	DOR.084	O-ring	58 x 4	NBR	2	2	2	2	2
	DOR.084.EP	O-ring	58 x 4	EPDM					
	DOR.084.VI	O-ring	58 x 4	FPM					
	DOR.084.PT	O-ring	58 x 4	Silicone FEP coated					
	DOR.043 ⁽⁵⁾	O-ring	64 x 4	NBR					
	DOR.043.EP ⁽⁵⁾	O-ring	64 x 4	EPDM					
	DOR.043.VI ⁽⁵⁾	O-ring	64 x 4	FPM					
DOR.043.PT ⁽⁵⁾	O-ring	64 x 4	Silicone FEP coated						
47	DOR.021	O-ring	24 x 3	NBR	2	2	2	2	2
	DOR.021.EP	O-ring	24 x 3	EPDM					
	DOR.021.VI	O-ring	24 x 3	FPM					
	DOR.021.PT	O-ring	24 x 3	Silicone FEP coated					
48	PRS.105.E	Strain bolt	M16 x 90		2	2	2	2	2
	PRS.117.E ⁽⁵⁾	Strain bolt	M16 x 80						
50	DOR.051	O-ring	280 x 6	NBR	1	1	1	1	1
	DOR.051.EP	O-ring	280 x 6	EPDM					
	DOR.051.VI	O-ring	280 x 6	FPM					
	DOR.051.PT	O-ring	280 x 6	Silicone FEP coated					
79	PBT.B002.E	Cartridge mechanical seal HD; single mechanical seal		SiSiC/ HNBR	2				
	PBT.B003.E			SiSiC/ FPM					
	PBT.B004.E			Duronit/ HNBR ⁽⁴⁾					
	PBT.B005.E			Duronit/ FPM ⁽⁴⁾					
	PBT.B006.E	Cartridge mechanical seal block ring; single mechanical seal		SiSiC/ EPDM					
	PBT.B010.E			SiSiC/ HNBR					
	PBT.B011.E			SiSiC/ FPM					
	PBT.B012.E			Carbon/ HNBR					
	PBT.B013.E			Carbon/ FPM					
	PBT.B014.E			Carbon/ EPDM					
	PBT.B019.E			Duronit/ HNBR ⁽⁴⁾					
	PBT.B037.E			SiSiC/ EPDM					
	PBT.B040.E			Duronit/ FPM ⁽⁴⁾					
83	NST.017	Plastic plug for strain screw			2	2	2	2	

⁽⁴⁾ up to 10 bar [145 psi] real operating pressure

⁽⁵⁾ for solid material lobes without sealing ring Pos. 43

Necessary spare parts for wear part replacement with Cartridge mechanical seal

Pos.	Part number	Description	Dimensions	Notes	Qty.	70	105	140	210
34	NPF.010	Fitting key	B 14 x 9 x 28			2	-	-	-
	NPF.011	Fitting key	B 14 x 9 x 56			-	2	-	2
	NPF.012	Fitting key	B 14 x 9 x 110			-	-	-	2
	NPF.013	Fitting key	B 14 x 9 x 100			-	-	2	-
37	PFL.B009.E	Wear plate		1.4571		2	2	2	2
	PFL.B009.E.G2	Wear plate		Plasma hardened					
	PFL.B009.E.G1	Wear plate		Tungsten carbide coated + shim					
For wear plate tungsten carbide coated									
37	DAD.B004	Shim	0.3 mm	PA6 Polyamide		2	2	2	2
	DAD.B005	Shim	0.5 mm	PA6 Polyamide		2	2	2	2
38	NSK.025.EE	Hexagon head bolt	M10 x 16	DIN 933		4	4	4	4
40	DAD.007	Gasket		Asbestos-free		4	4	4	4
46	DOR.084	O-ring	58 x 4	NBR		2	2	2	2
	DOR.084.EP	O-ring	58 x 4	EPDM					
	DOR.084.VI	O-ring	58 x 4	FPM					
	DOR.084.PT	O-ring	58 x 4	Silicone FEP coated					
	DOR.043 ⁽⁵⁾	O-ring	64 x 4	NBR					
	DOR.043.EP ⁽⁵⁾	O-ring	64 x 4	EPDM					
	DOR.043.VI ⁽⁵⁾	O-ring	64 x 4	FPM					
	DOR.043.PT ⁽⁵⁾	O-ring	64 x 4	Silicone FEP coated					
47	DOR.021	O-ring	24 x 3	NBR		2	2	2	2
	DOR.021.EP	O-ring	24 x 3	EPDM					
	DOR.021.VI	O-ring	24 x 3	FPM					
	DOR.021.PT	O-ring	24 x 3	Silicone FEP coated					
48	PRS.105.E	Strain bolt	M16 x 90			2	2	2	2
	PRS.117.E ⁽⁵⁾	Strain bolt	M16 x 80						
50	DOR.051	O-ring	280 x 6	NBR		1	1	1	1
	DOR.051.EP	O-ring	280 x 6	EPDM					
	DOR.051.VI	O-ring	280 x 6	FPM					
	DOR.051.PT	O-ring	280 x 6	Silicone FEP coated					
51-54		Rotary lobe		See page 10 and follow					
1.4571									
79	PBT.B002.E	Cartridge mechanical seal HD; single mechanical seal		SiSiC/ HNBR		2			
	PBT.B003.E		SiSiC/ FPM						
	PBT.B004.E		Duronit/ HNBR ⁽⁴⁾						
	PBT.B005.E		Duronit/ FPM ⁽⁴⁾						
	PBT.B006.E		SiSiC/ EPDM						
	PBT.B010.E	Cartridge mechanical seal block ring; single mechanical seal		SiSiC/ HNBR					
	PBT.B011.E		SiSiC/ FPM						
	PBT.B012.E		Carbon/ HNBR						
	PBT.B013.E		Carbon/ FPM						
	PBT.B014.E		Carbon/ EPDM						
	PBT.B019.E		Duronit/ HNBR ⁽⁴⁾						
	PBT.B037.E		SiSiC/ EPDM						
	PBT.B040.E		Duronit/ FPM ⁽⁴⁾						
83	NST.017	Plastic plug for strain screw				2	2	2	2

⁽⁴⁾ up to 10 bar [145 psi] real operating pressure

⁽⁵⁾ for solid material lobes without sealing ring Pos. 43

Necessary spare parts for component mechanical seal change

Pos.	Part number	Description	Dimensions	Notes	Qty.	70	105	140	210
46	DOR.084	O-ring	58 x 4	NBR	2	2	2	2	
	DOR.084.EP	O-ring	58 x 4	EPDM					
	DOR.084.VI	O-ring	58 x 4	FPM					
	DOR.084.PT	O-ring	58 x 4	Silicone FEP coated					
	DOR.043 ⁽⁵⁾	O-ring	64 x 4	NBR					
	DOR.043.EP ⁽⁵⁾	O-ring	64 x 4	EPDM					
	DOR.043.VI ⁽⁵⁾	O-ring	64 x 4	FPM					
DOR.043.PT ⁽⁵⁾	O-ring	64 x 4	Silicone FEP coated						
47	DOR.021	O-ring	24 x 3	NBR	2	2	2	2	
	DOR.021.EP	O-ring	24 x 3	EPDM					
	DOR.021.VI	O-ring	24 x 3	FPM					
	DOR.021.PT	O-ring	24 x 3	Silicone FEP coated					
48	PRS.105.E	Strain bolt	M16 x 90		2	2	2	2	
	PRS.117.E ⁽⁵⁾	Strain bolt	M16 x 80						
50	DOR.051	O-ring	280 x 6	NBR	1	1	1	1	
	DOR.051.EP	O-ring	280 x 6	EPDM					
	DOR.051.VI	O-ring	280 x 6	FPM					
	DOR.051.PT	O-ring	280 x 6	Silicone FEP coated					
83	NST.017	Plastic plug for strain screw			2	2	2	2	
201	DOR.085	O-ring	104 x 3	NBR	2	2	2	2	
202	DOR.085	O-ring	104 x 3	NBR	4	4	4	4	
	DOR.085.EP	O-ring	104 x 3	EPDM					
	DOR.085.VI	O-ring	104 x 3	FPM					
	DOR.085.PT	O-ring	104 x 3	Silicone FEP coated					
203	DOR.041	O-ring	60 x 2	NBR	4	4	4	4	
204	NUS.029	Shim			2	2	2	2	
205	DOR.034	O-ring	72.5 x 6.5	NBR	4	4	4	4	
	DOR.034.EP	O-ring	72.5 x 6.5	EPDM					
	DOR.034.VI	O-ring	72.5 x 6.5	FPM					
	DOR.034.SI	O-ring	72.5 x 6.5	Silicone check resistance!					
206	DGL.B012	Mechanical seal ring		Duronit ⁽⁴⁾	4	4	4	4	
	DGL.B012.SC	Mechanical seal ring		SiSiC (silicone carbide)					
207	DOR.005	O-ring	56 x 2	NBR	2	2	2	2	
208	DOR.135	O-ring	90 x 2	NBR	2	2	2	2	

⁽⁴⁾ up to 10 bar [145 psi] real operating pressure

⁽⁵⁾ for solid material lobes without sealing ring Pos. 43

Necessary spare parts for wear part replacement with component mechanical seal

Pos.	Part number	Description	Dimensions	Notes	Qty.	70	105	140	210
34	NPF.010	Fitting key	B 14 x 9 x 28			2	-	-	-
	NPF.011	Fitting key	B 14 x 9 x 56			-	2	-	2
	NPF.012	Fitting key	B 14 x 9 x 110			-	-	-	2
	NPF.013	Fitting key	B 14 x 9 x 100			-	-	2	-
37	PFL.B009.E	Wear plate		1.4571		2	2	2	2
	PFL.B009.E.G2	Wear plate		Plasma hardened					
	PFL.B009.E.G1	Wear plate		Tungsten carbide coated + shim					
For wear plate tungsten carbide coated									
37	DAD.B004	Shim	0.3 mm	PA6 Polyamide		2	2	2	2
	DAD.B005	Shim	0.5 mm	PA6 Polyamide		2	2	2	2
38	NSK.025.EE	Hexagon head bolt	M10 x 16	DIN 933		4	4	4	4
40	DAD.007	Gasket		Asbestos-free		4	4	4	4
46	DOR.084	O-ring	58 x 4	NBR		2	2	2	2
	DOR.084.EP	O-ring	58 x 4	EPDM					
	DOR.084.VI	O-ring	58 x 4	FPM					
	DOR.084.PT	O-ring	58 x 4	Silicone FEP coated					
	DOR.043 ⁽⁵⁾	O-ring	64 x 4	NBR					
	DOR.043.EP ⁽⁵⁾	O-ring	64 x 4	EPDM					
	DOR.043.VI ⁽⁵⁾	O-ring	64 x 4	FPM					
	DOR.043.PT ⁽⁵⁾	O-ring	64 x 4	Silicone FEP coated					
47	DOR.021	O-ring	24 x 3	NBR		2	2	2	2
	DOR.021.EP	O-ring	24 x 3	EPDM					
	DOR.021.VI	O-ring	24 x 3	FPM					
	DOR.021.PT	O-ring	24 x 3	Silicone FEP coated					
48	PRS.105.E	Strain bolt	M16 x 90			2	2	2	2
	PRS.117.E ⁽⁵⁾	Strain bolt	M16 x 80						
50	DOR.051	O-ring	280 x 6	NBR		1	1	1	1
	DOR.051.EP	O-ring	280 x 6	EPDM					
	DOR.051.VI	O-ring	280 x 6	FPM					
	DOR.051.PT	O-ring	280 x 6	Silicone FEP coated					
51-54		Rotary lobe		See page 10 and follow					
83	NST.017	Plastic plug for strain screw				2	2	2	2

⁽⁴⁾ up to 10 bar [145 psi] real operating pressure

⁽⁵⁾ for solid material lobes without sealing ring Pos. 43

Continuation see next page

VX136QVVA

Pos.	Part number	Description	Dimensions	Notes	Qty.	70	105	140	210
201	DOR.085	O-ring	104 x 3	NBR		2	2	2	2
202	DOR.085	O-ring	104 x 3	NBR		4	4	4	4
	DOR.085.EP	O-ring	104 x 3	EPDM					
	DOR.085.VI	O-ring	104 x 3	FPM					
	DOR.085.PT	O-ring	104 x 3	Silicone FEP coated					
203	DOR.041	O-ring	60 x 2	NBR		4	4	4	4
204	NUS.029	Shim				2	2	2	2
205	DOR.034	O-ring	72.5 x 6.5	NBR		4	4	4	4
	DOR.034.EP	O-ring	72.5 x 6.5	EPDM					
	DOR.034.VI	O-ring	72.5 x 6.5	FPM					
	DOR.034.SI	O-ring	72.5 x 6.5	Silicone check resistance!					
206	DGL.B012	Mechanical seal ring		Duronit ⁽⁴⁾		4	4	4	4
	DGL.B012.SC	Mechanical seal ring		SiSiC (silicone carbide)					
207	DOR.005	O-ring	56 x 2	NBR		2	2	2	2
208	DOR.135	O-ring	90 x 2	NBR		2	2	2	2

VOGELSANG



Hugo Vogelsang Maschinenbau GmbH

Holthöge 10-14
49632 Essen/Oldb.

Phone: +49 (0) 54 34 83 0
Fax: +49 (0) 54 34 83 10

vogelsang-gmbh.com
info@vogelsang-gmbh.com

ENGINEERED TO WORK

Australien
Vogelsang Pty. Ltd.
vogelsang.com.au

Indien
Vogelsang India Private Limited
vogelsangindia.com

Russland
Vogelsang Russland
vogelsang.ru

Brasilien
Vogelsang Brasil Ltda.
vogelsang.com.br

Irland
Vogelsang Ireland
vogelsang.ie

Schweden
Vogelsang Sverige AB
vogelsang.se

China
Vogelsang Mechanical Engineering (Shanghai) Co., Ltd.
vogelsang.com.cn

Italien
Vogelsang Italy Srl
vogelsang-srl.it

Spanien
Vogelsang S.L.
vogelsang.es

Dänemark
Vogelsang A/S
vogelsang-as.dk

Malaysia
Vogelsang Malaysia
vogelsang.info

Südkorea
Vogelsang Korea Co., Ltd.
vogelsang.co.kr

Deutschland - Niederlassung Ost
Vogelsang Lutherstadt Eisleben
vogelsang-gmbh.com

Mexico
Vogelsang De México S.de R.L. de CV
vogelsang.mx

Tschechische Republik
Vogelsang CZ s.r.o.
vogelsang-czech.cz

Finnland
Vogelsang Oy
vogelsang.fi

Polen
Vogelsang Poland Sp. z o.o.
vogelsang.pl

USA
Vogelsang USA Ltd.
vogelsangusa.com

Frankreich
Vogelsang France S.A.R.L.
vogelsang.fr

Österreich
Vogelsang Austria GmbH
vogelsang-austria.at

Großbritannien
Vogelsang Ltd.
vogelsang.co.uk

Rumänien
Vogelsang Romania SRL
vogelsang.ro