



Spare Parts List

RotaCut®

5000pro

ENGINEERED TO WORK



Spare parts list applies to orders from 2014-05-05 onwards

Issuer

Hugo Vogelsang Maschinenbau GmbH
Holthöge 10-14
49632 Essen/Oldb.

Phone: +49 54 34 83 0
Fax: +49 54 34 83 10

vogelsang-gmbh.com
info@vogelsang-gmbh.com

In the absence of express, written authorisation from the issuer, the reproduction or partial reproduction of this document in any form is prohibited.

We reserve the right to make technical modifications to the diagrams and information presented in this document in the event that such modifications become necessary for the enhancement of the machine.

© 2014 Hugo Vogelsang Maschinenbau GmbH

Registered trademarks of Vogelsang

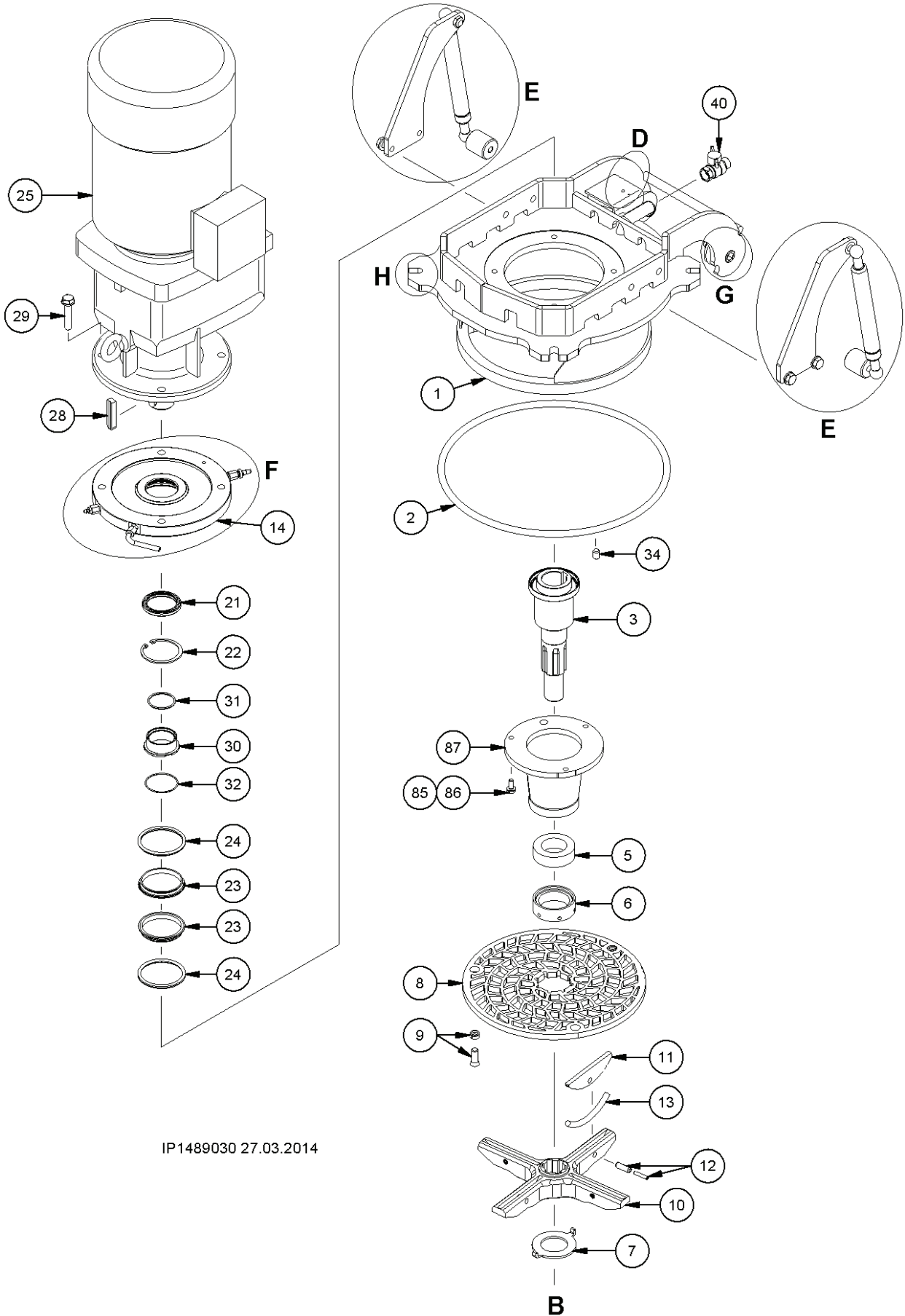
Vogelsang, Vogelsang Logo, RotaCut, HiFlo, ACC, CFC, BioCrack, XTill, EnergyJet and BioCut are registered trademarks of Hugo Vogelsang Maschinenbau GmbH.

The registered trademarks are not always designated with an ® symbol in this document.

Contents

Figure: Cutter head	4
Cutter head	5
Position 1-2	5
Shaft	5
Pos. 3-7	5
Cutting screen	6
Position 8-9	6
Blade rotor	6
Position 10-13	6
Adapter geared motor	7
Position 14-22	7
Mechanical seal	7
Position 23-24	7
Geared motor and accessories	8
Position 25-29	8
Inner ring unit	8
Position 30-32	8
Accessories	8
Pos. 34-40	8
Preload	9
Detail B	9
Position 46-57	9
Figure: ACC pressure transmission unit	10
ACC pressure transmission unit	11
Pos. 58-83	11
Holder pressure transmission unit	12
Position 84-88	12
Cutting screen support	12
Position 86-89	12
Pot	13
Position 90	13
INLINE	13
Cyclone separator	14
BioCut	14
Compact	15
Compact XL	16
Blind flange + accessories	17
Position 91-95	17
Position 95-97	18
Scraper (Option)	18
Adaptor flange DIN/ANSI	19
Position 100-107	19
Pipe elbow BioCut	20
Position 108-113	20
Safety switch	21
Detail D	21
Position 115-118	21
Gas spring	22
Detail E	22
Pos. 128-135	22
Pivot	23
Detail G	23
Position 136-140	23
Clamping fastener	24
Detail H	24
Position 160-164	24
Accessories	24
Pos. 180-182	24
Tools	25
Safety sticker	26
Required spare parts for mechanical seal change	27
Necessary spare parts for blade change	28
Required spare parts for wear part replacement	29

Figure: Cutter head



IP1489030 27.03.2014

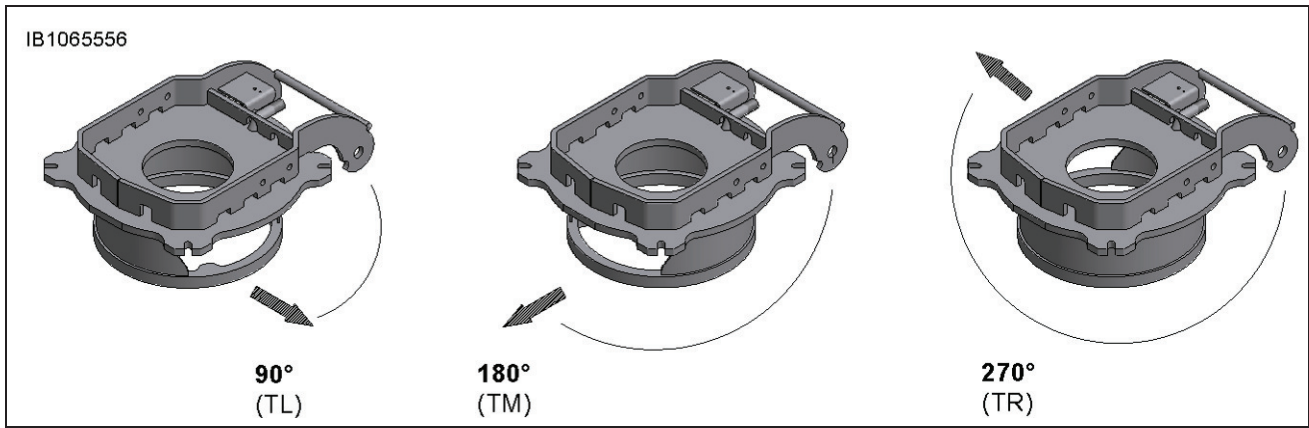


Illustration: Version 90°/ 180°/ 270° (TL/ TM/ TR)

Cutter head

Position 1-2

Pos.	Part number	Description	Dimensions	Notes	Rep.	S ^(a)	E ^(a)	L ^(a)
------	-------------	-------------	------------	-------	------	------------------	------------------	------------------

1.0038 galvanized

1	GSK0174	Cutter head	180° (TM)			1	-	-
	GSK0175	Cutter head	90° (TL)					
	GSK0176	Cutter head	270° (TR)					

1.4571

1	GSK0177	Cutter head	180° (TM)			-	1	-
	GSK0178	Cutter head	90° (TL)					
	GSK0179	Cutter head	270° (TR)					

Compact + Compact XL + BioCut

2	DOR.158	O-ring	395 x 12	NBR		1	1	1
	DOR.158.SI	O-ring	395 x 12	MVQ				

Inline/ Cyclone separator:

2	DOR0022	O-ring	393 x 18	NBR		1	1	1
---	---------	--------	----------	-----	--	---	---	---

Shaft

Pos. 3-7

Pos.	Part number	Description	Dimensions	Notes	Rep.	S ^(a)	E ^(a)	L ^(a)
------	-------------	-------------	------------	-------	------	------------------	------------------	------------------

3	GSW.019	Drive shaft					1	
5	DFD.107	Cell PU sealing ring				1	1	1
6	HRS.510.E	Pipe nipple	2 ½ inch	Stainless steel		1	1	1

1.0038

7	GFL.730	Distance washer for rotor		4-wing		1	-	1
	GFL.653	Distance washer for rotor		3-wing/ 6-wing				

1.4571

7	GFL.730.E	Distance washer for rotor		4-wing		-	1	-
	GFL.653.E	Distance washer for rotor		3-wing/ 6-wing				

Cutting screen**Position 8-9**

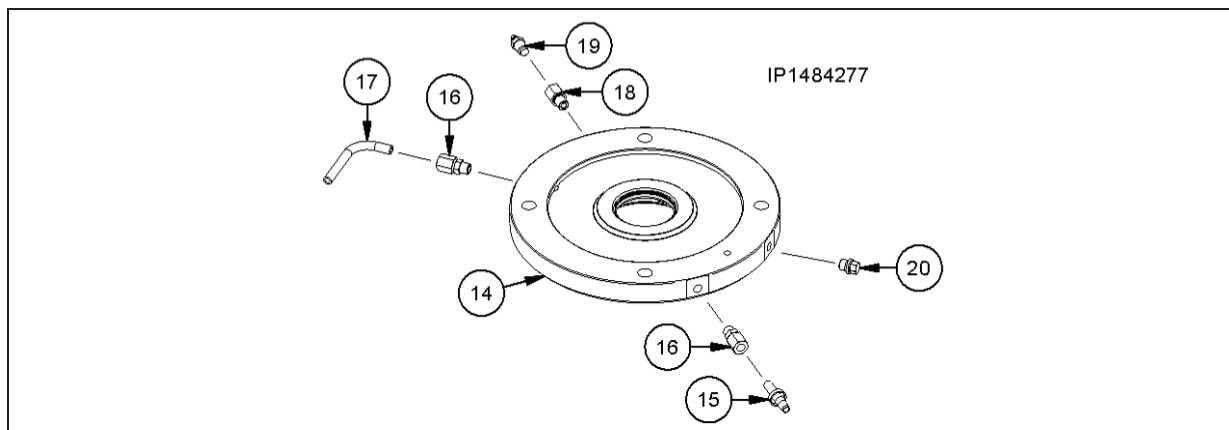
Pos.	Part number	Description	Dimensions	Notes	Rep.	S ^(a)	E ^(a)	L ^(a)
Steel								
8	GFL.421.N1.M9	Cutting screen	Max. ø 24 mm	Medium; t = 12 mm		1	-	1
	GFL.430.N1.M9	Cutting screen	Max. ø 15 mm	Fine				
	GFL.150.N3.M9	Cutting screen	Max. ø 30 mm	Coarse				
	GFL.543.M9	Cutting screen	Max. ø 4 mm	Honey combs				
	GFL.572.M9	Cutting screen	Max. ø 6 mm	Honey combs				
	GFL.499.N1.M9	Cutting screen	Max. ø 8 mm	Honey combs				
	GFL.511.N1.M9	Cutting screen	Max. ø 10 mm	Honey combs				
	GFL.497.M9	Cutting screen	Max. ø 12 mm	Honey combs				
GFL.493.M9	Cutting screen	Max. ø 15 mm	Honey combs					
8	GFL0317	Cutting screen	Max. ø 24 mm	Medium; t = 15 mm		1	-	1
Stainless steel								
8	GFL.421.N1.E3	Cutting screen	Max. ø 24 mm	Medium; t=12 mm		-	1	-
	GFL.430.N1.E3	Cutting screen	Max. ø 15 mm	Fine				
	GFL.150.N3.E3	Cutting screen	Max. ø 30 mm	Coarse				
	GFL.543.E3	Cutting screen	Max. ø 4 mm	Honey combs				
	GFL.572.E3	Cutting screen	Max. ø 6 mm	Honey combs				
	GFL.499.N1.E3	Cutting screen	Max. ø 8 mm	Honey combs				
	GFL.511.N1.E3	Cutting screen	Max. ø 10 mm	Honey combs				
	GFL.497.E3	Cutting screen	Max. ø 12 mm	Honey combs				
GFL.493.E3	Cutting screen	Max. ø 15 mm	Honey combs					
		Max. ø = max. free passage						
9	GRS.203.EE	Clamp bolt				3	3	3
	GRS.202	Spring pin				3	-	3
	GRS.202.EE	Spring pin				-	3	-

Blade rotor**Position 10-13**

Pos.	Part number	Description	Dimensions	Notes	Rep.	S ^(a)	E ^(a)	L ^(a)
10	GFM.016.N2	Blade rotor		4-wing; groove 8 mm		1		
	GFM.022.N2.T1	Blade rotor		6-wing; groove 5 mm				
11	GSM.005.T1.E4	Cutting blade	8 mm	→ GFM.016.N2 high version		4		
	GSM.015.T1.E4	Cutting blade	5 mm	→ GFM.022.N2.T1 high version		6 **		
12	NSP.030.E	Spring pin	10 x 30			4 / 6 **		
	NSP.031.E	Spring pin	6 x 30			4 / 6 **		
13	ZDFD.390.0135	Polyethylene cord				4 / 6 **		

** Quantities or parts in case of rotor with 6 wings

(a Design: S = steel, galvanised; E = stainless steel; L = steel, painted

Adapter geared motor**Position 14-22**

Pos.	Part number	Description	Dimensions	Notes	Rep.	S ^(a)	E ^(a)	L ^(a)
14-22	GRT.477.N1	Geared motor adaptor		Pre-installed		x	-	x
	GRT.477.N1.E	Geared motor adaptor		Pre-installed, stainless steel		-	x	-
14	GRS.128	Adaptor				1	-	1
	GRS.128.E	Adaptor		Stainless steel		-	1	-
15	NGE.120	Barbed fitting	BEL; DN6			1	1	1
16	NGE.058	Screw connection		Straight		2	2	2
17	PRS.116	Inspection pipe				1	1	1
18	GRS.207	Screw connection	M 10 x 1			1	1	1
19	NLV.001	Breather valve				1	1	1
20	NSK.080	Screw plug	M 10 x 1	DIN 910		1	1	1
21	DWD.023	Rotary shaft seal	55 x 70 x 7/7.5	NBR		1	1	1
22	NSR.025	Retaining ring	72 x 2.5	DIN 472		1	1	1

Mechanical seal**Position 23-24**

Pos.	Part number	Description	Dimensions	Notes	Rep.	S ^(a)	E ^(a)	L ^(a)
23	DGL.B012	Mechanical seal	76.90-H-02 A1	Duronit		2	2	2
	DGL.B012.SC	Mechanical seal	76.90-H-02 A1	SiSiC (silicon carbide)				
24	DOR.034.HNB	O-ring	72.5 x 6.5	HNBR		2	2	2
	DOR.034.VI	O-ring	72.5 x 6.5	FPM				

(a Design: S = steel, galvanised; E = stainless steel; L = steel, painted)

Gear motor and accessories**Position 25-29**

Pos.	Part number	Description	Dimensions	Notes	Rep.	S ^(a)	E ^(a)	L ^(a)	
25		SK42							
	AGM1185	Geared motor	SK42FAL100LH/4TF	2,2 kW; 66 min ⁻¹					
	AGM1186	Geared motor	SK42FAL112MH/4TF	4 kW; 117 min ⁻¹					
	AGM1187	Geared motor	SK42FAL112MH/4TF	4 kW; 141 min ⁻¹					
	AGM1188	Geared motor	SK42FAL112MH/4TF	4 kW; 233 min ⁻¹					
	AGM1189	Geared motor	SK42FAL132SH/4TF	5,5 kW; 171 min ⁻¹					
	AGM1190	Geared motor	SK42FAL132SH/4TF	5,5 kW; 201 min ⁻¹					
	AGM1191	Geared motor	SK42FAL132SH/4TF	5,5 kW; 236 min ⁻¹					
	AGM1192	Geared motor	SK42FAL132SH/4TF	5,5 kW; 273 min ⁻¹					
	AGM1193	Geared motor	SK42FAL132SH/4TF	5,5 kW; 319 min ⁻¹					
			SK52						
	AGM1194	Geared motor	SK52F-132MH/4 TF	7,5 kW; 201 min ⁻¹					
	AGM1195	Geared motor	SK52F-132MH/4 TF	7,5 kW; 261 min ⁻¹					
AGM1196	Geared motor	SK52F-132MH/4 TF	7,5 kW; 317 min ⁻¹						
	NGE0060	Vent screw for geared motor					x		
25.1	DWD.074	Radial shaft seal for SK42	60 x 90 x 9	Included in geared motor SK42				1	
	DWD0014	Radial shaft seal for SK52	65 x 120 x 10 AF	Included in geared motor SK52				1	
28	NPF.061	Fitting key	AB 14 x 9 x 62					1	

Steel

29	NSK.046	Hexagon head bolt	M 12 x 60	DIN 931		4	-	4
	NUS.005	Washer	A 13 x 24 x 2.5	DIN 125		4	-	4

Stainless steel

29	NSK.046.EE	Hexagon head bolt	M 12 x 60	DIN 931		-	4	-
	NUS.005.E	Washer	A 13 x 24 x 2.5	DIN 125		-	4	-

Inner ring unit**Position 30-32**

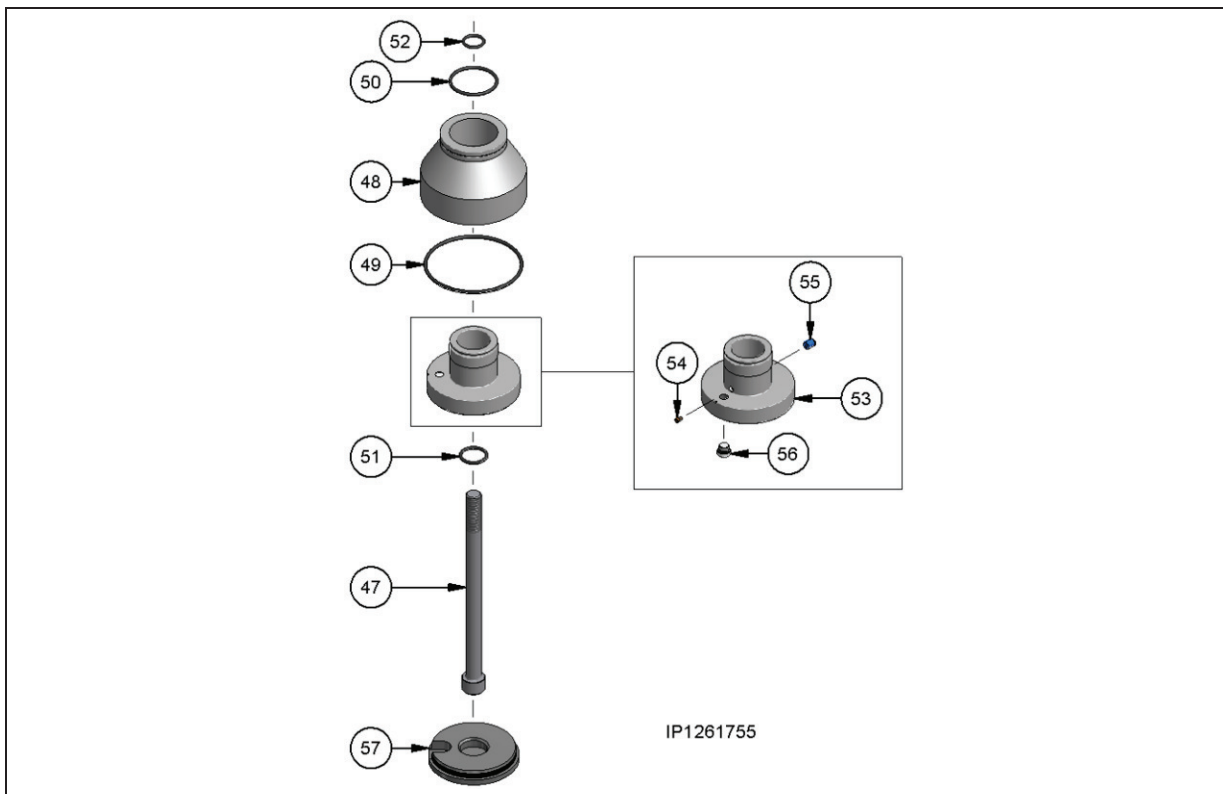
Pos.	Part number	Description	Dimensions	Notes	Rep.	S ^(a)	E ^(a)	L ^(a)
30	IBA1438	Inner ring unit						1
31	DOR0262	O-ring	Ø 42 mm x 3.5 mm	NBR				1
32	DOR.017	O-ring	Ø 55 mm x .,5 mm	NBR				1

Accessories**Pos. 34-40**

Pos.	Part number	Description	Dimensions	Notes	Rep.	S ^(a)	E ^(a)	L ^(a)
34	NGS0040	Slotted set screw	M 12 x 10	EN 24766		1	-	1
	NGS0037	Slotted set screw	M 12 x 16	DIN 913; A4		-	1	-
40	GHN.013	Ball valve				1	1	1

(a Design: S = steel, galvanised; E = stainless steel; L = steel, painted

Preload
Detail B

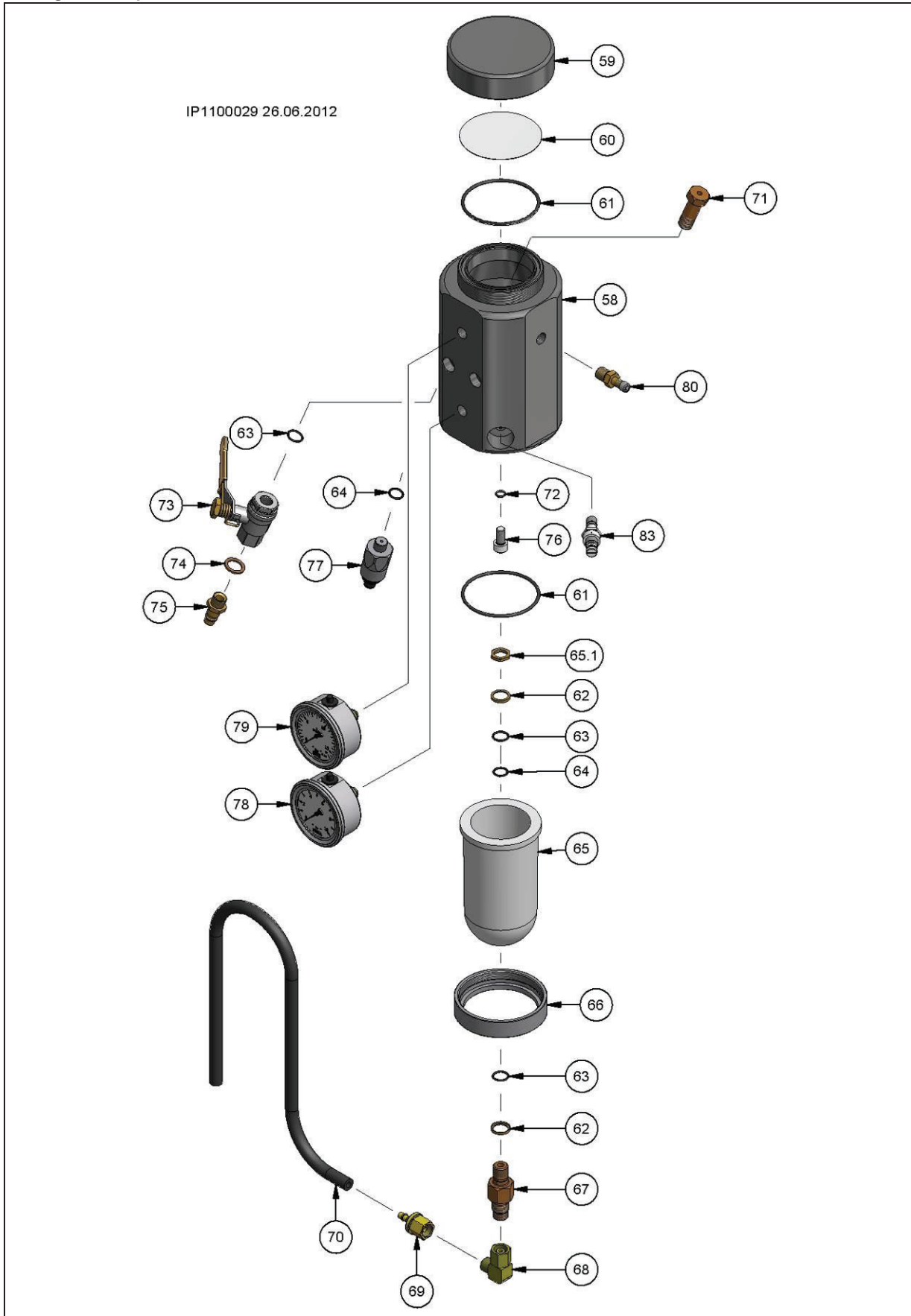


Position 46-57

Pos.	Part number	Description	Dimensions	Notes	Rep.	S ^(a)	E ^(a)	L ^(a)
46	NUS.098.E	Shim	75 x 36 x 1	Option		0-4	0-4	0-4
47	NSI.138	Cylinder head bolt	M16 x 240	DIN 912		1	-	1
	NSI.138.E	Cylinder head bolt	M16 x 240	DIN 912		-	1	-
	GRT.001.N2	ACC complete		Contains pos. 48 - 57				
48	GRS.079.E.N2	ACC cylinder		18 mm stroke			1	
NBR								
49	DOR.046	O-ring	96 x 3	NBR			1	
50	DOR.072	O-ring	45 x 3	NBR			1	
51	DOR.021	O-ring	24 x 3	NBR			1	
52	DOR.079	O-ring	18.4 x 2.7	NBR			1	
FPM (Option)								
49	DOR.046.VI	O-ring	96 x 3	FPM			1	
50	DOR.072.VI	O-ring	45 x 3	FPM			1	
51	DOR.021.VI	O-ring	24 x 3	FPM			1	
52	DOR.079.VI	O-ring	18.4 x 2.7	FPM			1	
	GRT.006.N1	ACC piston pre-installed		Contains pos. 53-56				
53	GRS.078.E.N2	ACC piston		18 mm stroke			1	
54	GRS.146	Throttle					1	
	GRS.147	Screw plug	M 4 x 7	(Option)				
55	PSV.006	Check valve					1	
56	NSK0005	Screw plug					1	
57	NST0002	Protective cap					1	

(a Design: S = steel, galvanised; E = stainless steel; L = steel, painted

Figure: ACC pressure transmission unit



ACC pressure transmission unit

Pos. 58-83

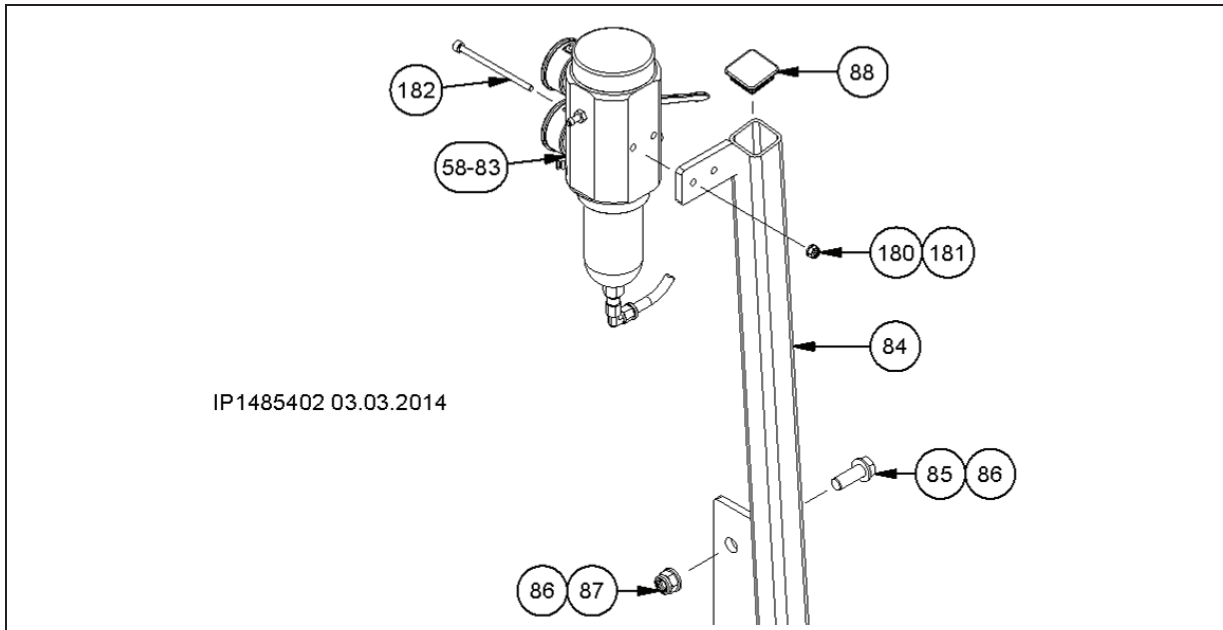
Pos.	Part number	Description	Dimensions	Notes	Rep.	S ^(a)	E ^(a)	L ^(a)
	GRT0060	Pressure transmission unit		Includes pos. 58-83				
58	GRS0195	Housing					1	
59	GRS0171	Cover					1	
60	RFL3683	Sealing plate					1	
61	DOR.147	O-ring	68 x 3	NBR			2	
62	NDR.001	Support ring	M12				2	
63	DOR.040	O-ring	12 x 2				2	
64	DOR.104	O-ring	11 x 1.5				3	
65	AHA.027	Oil tank					1	
65.1	NMS0014	Flat nut	M14 x 1				1	
66	NGE0076	Threaded ring					1	
67	PRS0033	Coupling					1	
68	NGE.086	Elbow coupling	EEL 08L				1	
69	NVR.003	Seal bonnet	DKL, DN6				1	
70	HSC.015 (5	Hose	DN6				1.1 m	
71	PRS0397	Hollow screw	¼ inch				1	
72	DOR.128	O-ring	7.5 x 1.5				1	
73	GHN.057	Ball valve	¼"				1	
74	DKR.006	Sealing ring	A 14 x 20 x 1.5	DIN 7603			1	
75	NGE.088	Pneumatic plug nipple					1	
76	NSI0023	Cylinder head bolt	M8 x 16				1	
77	SDS0003	Normally closed contact for pressure control switch	24 V	1 to 10 bar			1	
	EKT0012	Plug with cable (5 m)	M12				1	
78	SMD.049	Pressure gauge		0 to 10 bar			1	
79	SMD0029	Pressure gauge		0 to 16 bar			1	
80	NGE0109	Screwed valve					1	
83	APV0022	Pressure regulator hollow screw	G1/8	1-8 bar			1	
	AHP.002	Manual air pump					1	

⁽⁵⁾ Please specify length when spare parts order!

(a Design: S = steel, galvanised; E = stainless steel; L = steel, painted

Holder pressure transmission unit

Position 84-88



Pos.	Part number	Description	Dimensions	Notes	Rep.	S ^(a)	E ^(a)	L ^(a)
1.0038 galvanised								
84	RCS0112	Holder	90° / 270°	Cyclone separator/ Compact/ Compact XL		1	-	-
	RCS0108	Holder	180°	Inline/ Compact/ Compact XL				
1.4571								
84	RCS0137	Holder	90° / 270°	Compact/ Compact XL		-	1	-
	RCS0109	Holder	180°	Inline/ Compact/ Compact XL				
1.0038 painted								
84	RCS0136	Holder	90° / 270°	Cyclone separator/ Compact/ Compact XL		-	-	1
	RCS0140	Holder	180°	Inline/ Compact/ Compact XL				
85	NSK.054	Hexagon head bolt	M 16 x 45	DIN 933		2	-	2
	NSK.054.EE	Hexagon head bolt	M 16 x 45	DIN 933				
86	NUS.007	Washer	A; 17 x 30 x 3	DIN 125		4	-	4
	NUS.007.EE	Washer	A; 17 x 30 x 3	DIN 125				
87	NMK.007	Hexagon nut	M 16	DIN 985		2	-	2
	NMK.007.EE	Hexagon nut	M 16	DIN 985				
88	NST0003	Square pipe plug	50 x 50 x 14 x 5			1	1	1

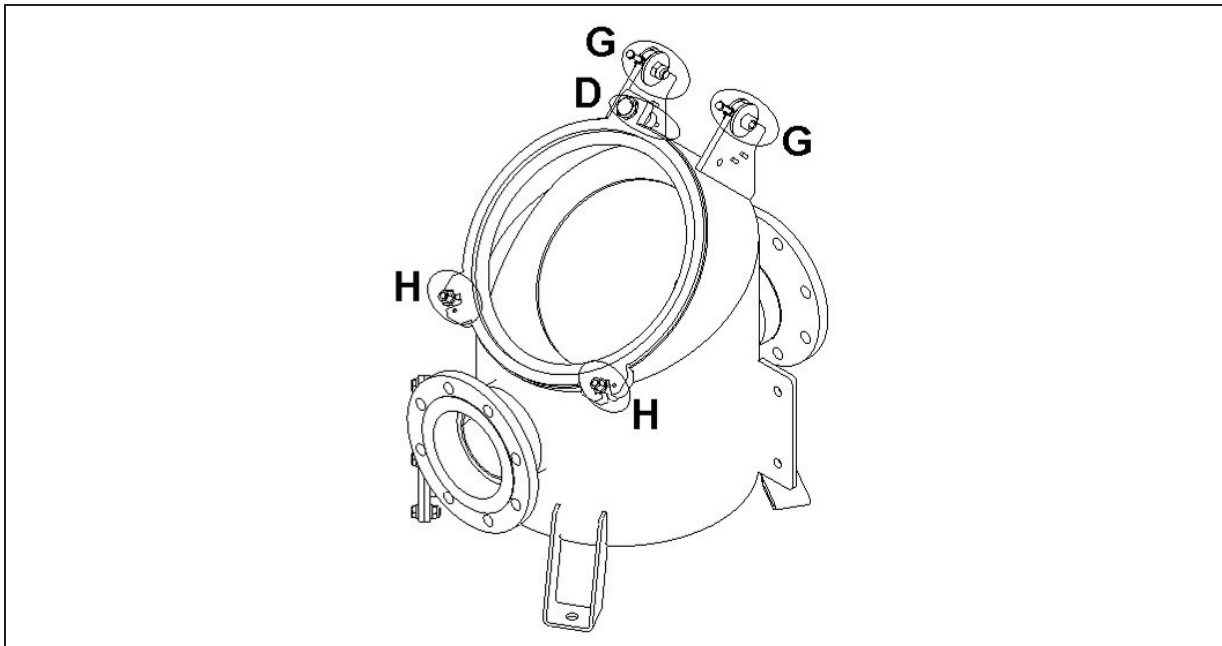
Cutting screen support

Position 86-89

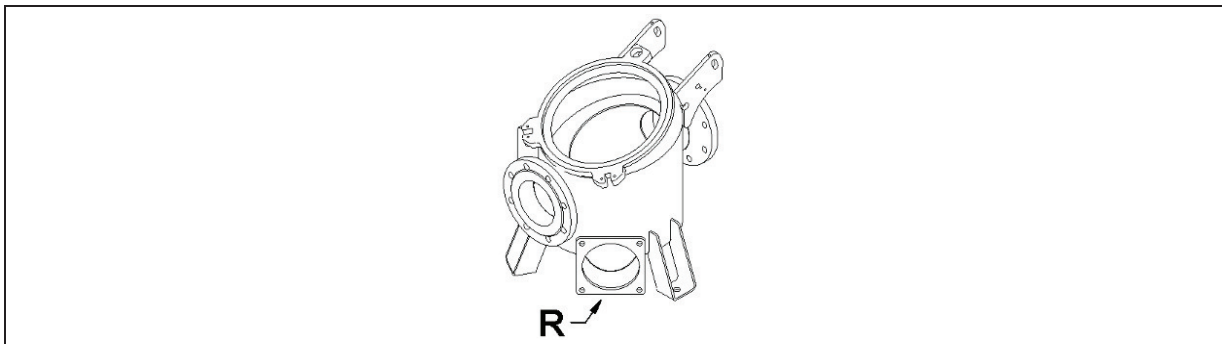
Pos.	Part number	Description	Dimensions	Notes	Rep.	S ^(a)	E ^(a)	L ^(a)
86	NSK.018.EE	Hexagon head bolt	M 8 x 20	DIN 933		3	3	3
	NUS.003.EE	Washer	A 8,4 x 16 x 1,6	DIN 125				
	GAS.031.E	Cutting screen support complete		Contains Pos. 87-89		x	x	x
87	GST.020.E	Cutting screen support				1	1	1

(a Design: S = steel, galvanised; E = stainless steel; L = steel, painted

Pot
Position 90



INLINE



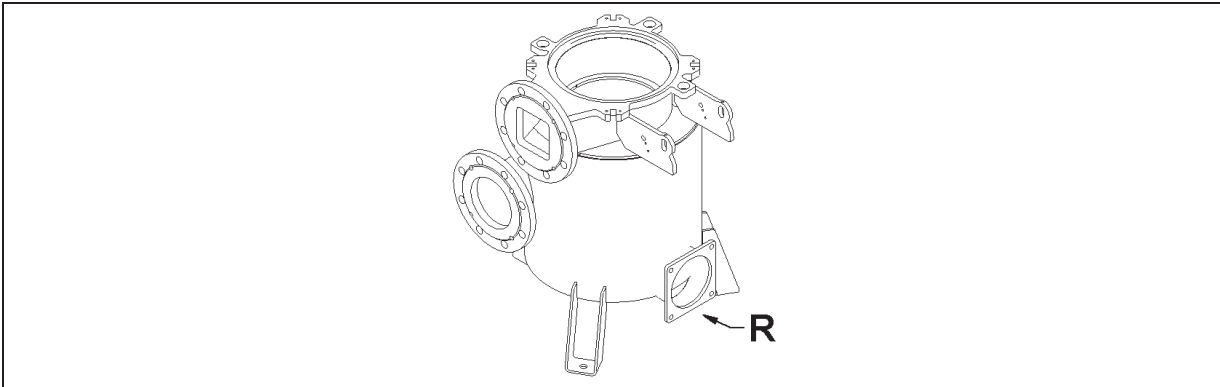
R1: Cleaning port 6 inch + blind flange 6 inch (pos. 91-94)
R2: Cleaning port 6 inch + adaptor flange 6 inch DIN/ ANSI (pos.100-107)

Pos.	Part number	Description	Dimensions	Notes	Rep.	S ^(a)	E ^(a)	L ^(a)
1.0038 galvanised								
90	GRC0341	Pot Inline	DN 125/ DN125	(* left		1	-	-
	GRC0334	Pot Inline	DN 150/ DN 150	(* right				
	GRC0337	Pot Inline	DN 150/ DN 150	(* left				
	GRC0339	Pot Inline	6 inch/ 6 inch (ANSI-Flansch)	(* right				
	GRC0340	Pot Inline	6 inch/ 6 inch (ANSI-Flansch)	(* left				
1.4571								
90	GRC0335	Pot Inline	DN 150/ DN 150	(* right		-	1	-
	GRC0338	Pot Inline	DN 150/ DN 150	(* left				
	GRC0355	Pot Inline	DN 100/ DN 100	(* right				
	GRC0388	Pot Inline	6 inch/ 6 inch (ANSI flange)	(* right				
	GRC0389	Pot Inline	6 inch/ 6 inch (ANSI flange)	(* left				
1.0038 painted								
90	GRC0336	Pot Inline	DN 150/ DN 150	(* right		-	-	1

(* Position of cleaning port

(a Design: S = steel, galvanised; E = stainless steel; L = steel, painted

Cyclone separator

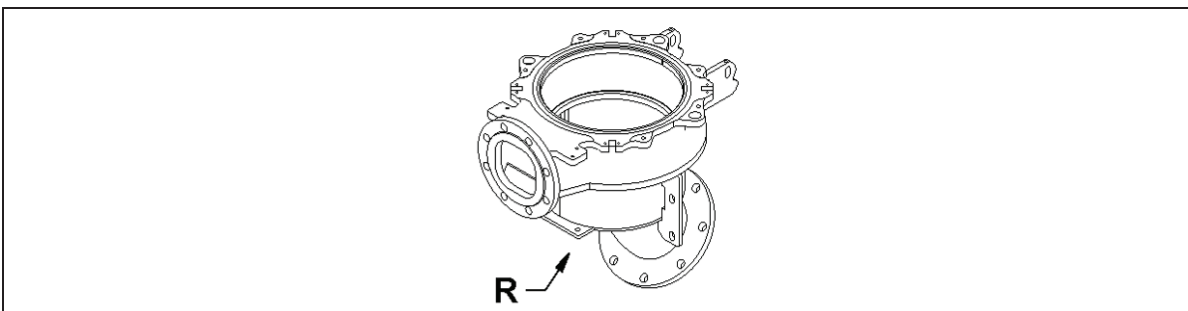


R: Cleaning port 8 inch + blind flange 8 inch (pos. 91-95)

Pos.	Part number	Description	Dimensions	Notes	Rep.	S ^(a)	E ^(a)	L ^(a)
1.0038 galvanised								
90	GRC0347	Cyclone separator	DN 200/ DN 200	(**		1	-	-
	GRC0378	Cyclone separator	DN 200/ DN 200	Mounting of three-point base (**				
1.0038 painted								
90	GRC0380	Cyclone separator	DN 200/ DN 200	(**		1	-	-
	GRC0381	Cyclone separator	DN 200/ DN 200	Mounting of three-point base (**				

(** custom welded as per TINF.RC.005.DE.EN

BioCut



R 1: Cleaning port 6 inch + pipe elbow draining connection BioCut (Pos.108-113) + blind flange 6 inch (Pos.91-94)

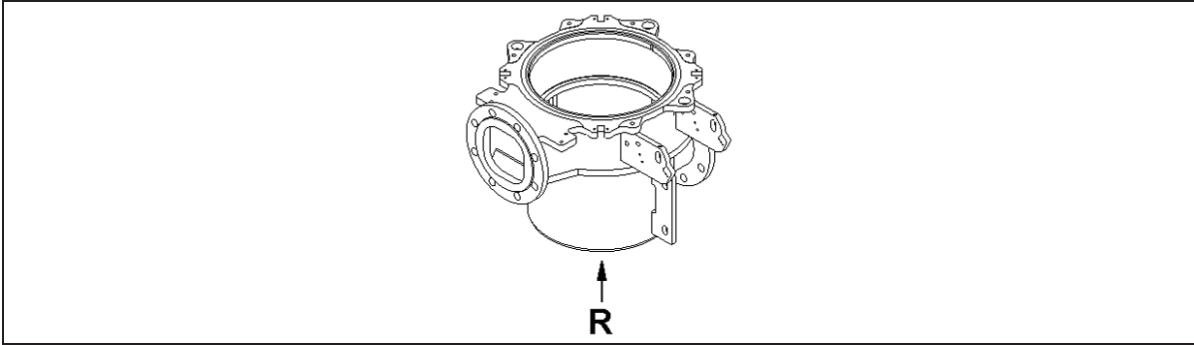
R 2: Cleaning port 6 inch + pipe elbow draining connection BioCut (Pos.108-113) + adaptor flange 6 inch auf DIN/ ANSI (Pos.101-107)

R 3: Cleaning port 6 inch + blind flange 6 inch (Pos. 91-94)

Pos.	Part number	Description	Dimensions	Notes	Rep.	S ^(a)	E ^(a)	L ^(a)
90		DN200 inlet/ outlet						
	GRC0421	Pot BioCut		1.0038 galvanised		1	.-	-
	GRC0422	Pot BioCut		1.4571		-	1	-

(a Design: S = steel, galvanised; E = stainless steel; L = steel, painted

Compact

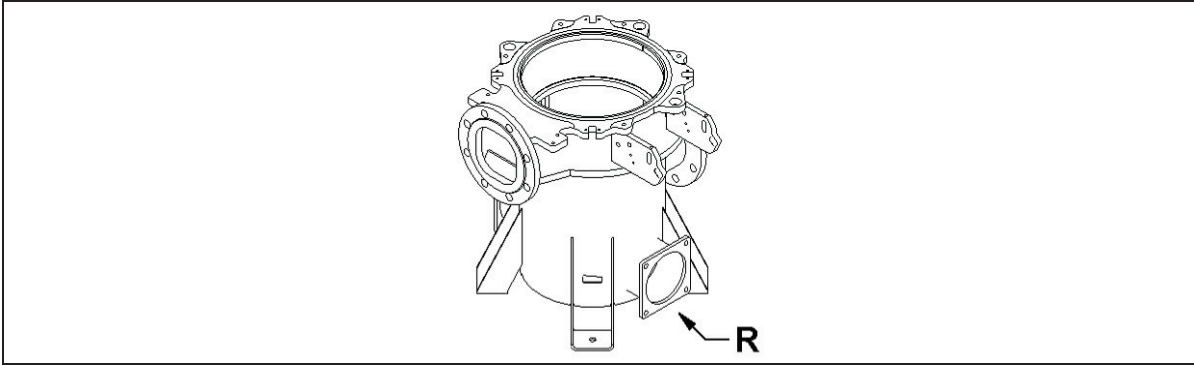


R1: Cleaning port 6 inch + pipe elbow draining connection Compact (pos. 96-98) + blind flange 6 inch (Pos. 91-95)
R2: Cleaning port 6 inch + pipe elbow draining connection Compact (pos. 96-98) + DIN/ANSI adaptor flange (Pos.100-106)
R3: Cleaning port 6 inch + blind flange 6 inch (91-95)

Pos.	Part number	Description	Dimensions	Notes	Rep.	S ^(a)	E ^(a)	L ^(a)
1.0038 galvanised								
90		DN150 inlet / DN150 outlet				1	-	-
	GRC0435	Pot Compact	90° (TL)	1.0038 galvanised				
	GRC0411	Pot Compact	180° (TM)	1.0038 galvanised				
	GRC0436	Pot Compact	270° (TR)	1.0038 galvanised				
	GRC0416	Pot Compact		Flange mounted version				
		DN200 inlet / DN150 outlet						
	GRC0439	Pot Compact	90° (TL)	1.0038 galvanised				
	GRC0437	Pot Compact	180° (TM)	1.0038 galvanised				
	GRC0440	Pot Compact	270° (TR)	1.0038 galvanised				
	GRC0413	Pot Compact		Flange mounted version				
1.4571								
90		DN150 inlet / DN150 outlet				-	1	-
	GRC0442	Pot Compact	90° (TL)	1.4571				
	GRC0441	Pot Compact	180° (TM)	1.4571				
	GRC0443	Pot Compact	270° (TR)	1.4571				
	GRC0414	Pot Compact		Flange mounted version				
		DN200 inlet / DN150 outlet						
	GRC0445	Pot Compact	90° (TL)	1.4571				
	GRC0444	Pot Compact	180° (TM)	1.4571				
	GRC0446	Pot Compact	270° (TR)	1.4571				
GRC0415	Pot Compact		Flange mounted version					

(a Design: S = steel, galvanised; E = stainless steel; L = steel, painted

Compact XL



R1: Cleaning port 6 inch + blind flange 6 inch (pos. 91-94)

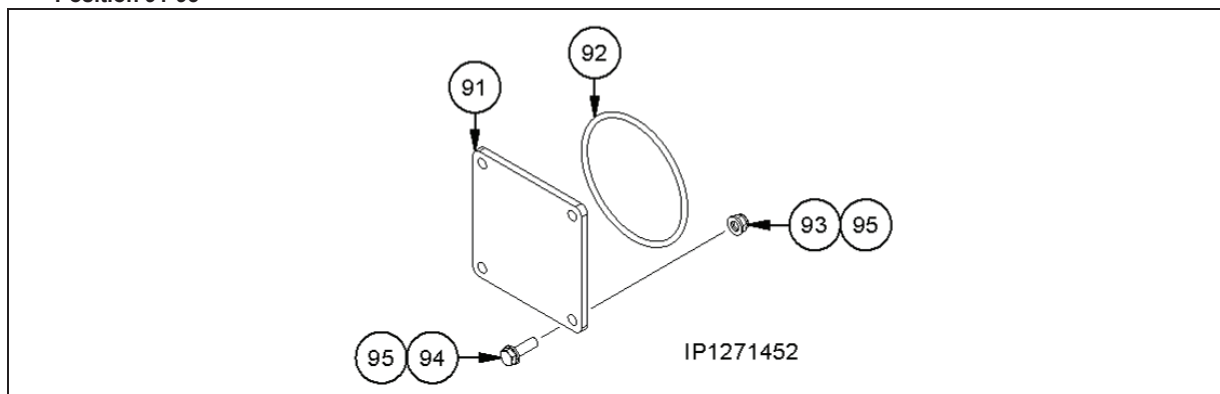
R2: Cleaning port 6 inch + adaptor flange 6 inch DIN/ ANSI (pos.100-107)

Pos.	Part number	Description	Dimensions	Notes	Rep.	S ^(a)	E ^(a)	L ^(a)
1.0038 galvanised								
90		DN150 inlet / DN150 outlet				1	-	-
	GRC0424	Pot Compact XL	90° (TL)	1.0038 galvanised				
	GRC0423	Pot Compact XL	180° (TM)	1.0038 galvanised				
	GRC0425	Pot Compact XL	270° (TR)	1.0038 galvanised				
	GRC0417	Pot Compact XL		Flange mounted version				
		DN200 inlet / DN150 outlet						
	GRC0427	Pot Compact XL	90° (TL)	1.0038 galvanised				
	GRC0426	Pot Compact XL	180° (TM)	1.0038 galvanised				
	GRC0428	Pot Compact XL	270° (TR)	1.0038 galvanised				
GRC0418	Pot Compact XL		Flange mounted version					
1.4571								
90		DN150 inlet / DN150 outlet				-	1	-
	GRC0430	Pot Compact XL	90° (TL)	1.4571				
	GRC0429	Pot Compact XL	180° (TM)	1.4571				
	GRC0431	Pot Compact XL	270° (TR)	1.4571				
	GRC0419	Pot Compact XL		Flange mounted version				
		DN200 inlet / DN150 outlet						
	GRC0433	Pot Compact XL	90° (TL)	1.4571				
	GRC0432	Pot Compact XL	180° (TM)	1.4571				
	GRC0434	Pot Compact XL	270° (TR)	1.4571				
GRC0420	Pot Compact XL		Flange mounted version					

(a Design: S = steel, galvanised; E = stainless steel; L = steel, painted

Blind flange + accessories

Position 91-95



6 inch

Pos.	Part number	Description	Dimensions	Notes	Rep.	S ^(a)	E ^(a)	L ^(a)
91-95	GAS0001	Mounting kit blind flange	6 inch	NBR; 1.0038 galvanised		x	-	-
	GAS0002	Mounting kit blind flange	6 inch	NBR; 1.4571		-	x	-
	GAS0004	Mounting kit blind flange	6 inch	NBR; 1.0038 painted		-	-	x
	GAS0031	Mounting kit blind flange	6 inch	MVQ; 1.0038 galvanised		x	-	-
	GAS0032	Mounting kit blind flange	6 inch	MVQ; 1.4571		-	x	-
	GAS0033	Mounting kit blind flange	6 inch	MVQ; 1.0038 painted		-	-	x
91	GFL.459	Blind flange	6 inch	1.0038 galvanised		1	-	-
	GFL.459.E	Blind flange	6 inch	1.4571		-	1	-
	GFL0216	Blind flange	6 inch	1.0038 painted		-	-	1
92	DOR.016	O-ring	160 x 7	NBR		1	1	1
	DOR.016.SI	O-ring	160 x 7	MVQ; FEP coated				

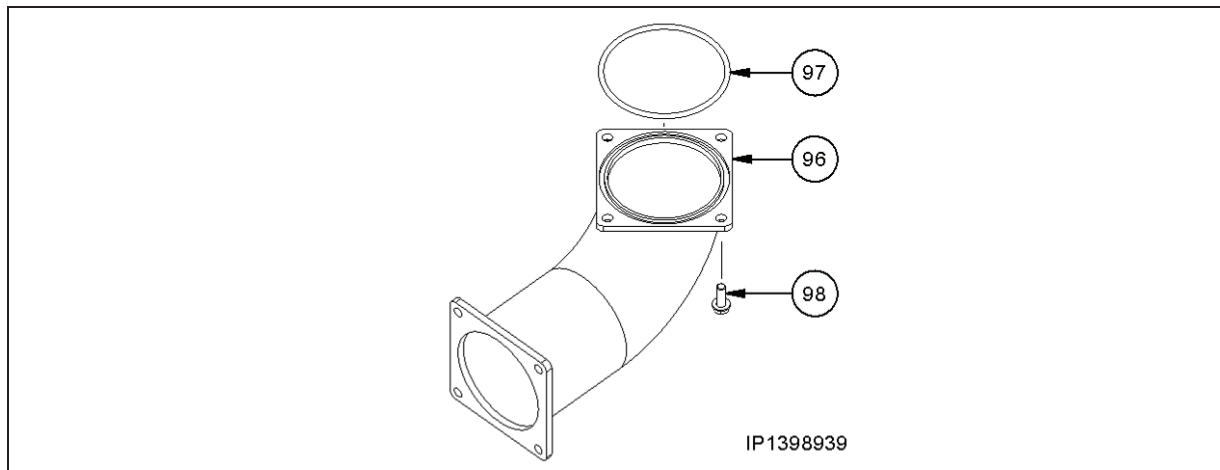
8 inch

Pos.	Part number	Description	Dimensions	Notes	Rep.	S ^(a)	E ^(a)	L ^(a)
91-95	GAS0005	Mounting kit blind flange	8 inch	NBR; 1.0038 galvanised		x	-	-
	GAS0006	Mounting kit blind flange	8 inch	NBR; 1.4571		-	x	-
	GAS0008	Mounting kit blind flange	8 inch	NBR; 1.0038 painted		-	-	x
	GAS0034	Mounting kit blind flange	8 inch	MVQ; 1.0038 galvanised		x	-	-
	GAS0035	Mounting kit blind flange	8 inch	MVQ; 1.4571		-	x	-
	GAS0036	Mounting kit blind flange	8 inch	MVQ; 1.0038 painted		-	-	x
91	GFL.011.T1	Blind flange	8 inch	1.0038 galvanised		1	-	-
	GFL.011.E.T1	Blind flange	8 inch	1.4571		-	1	-
	GFL.011.FS	Blind flange	8 inch	1.0038 painted		-	-	1
92	DOR.018	O-ring	204 x 7	NBR		1	1	1
	DOR.018.SI	O-ring	202,6 x 6,9	MVQ; FEP coated				

Pos.	Part number	Description	Dimensions	Notes	Rep.	S ^(a)	E ^(a)	L ^(a)
Steel								
93	NMK.002	Hexagon nut	M 12	DIN 985		4	-	4
94	NSK.030.E	Hexagon head bolt	M 12 x 40	DIN 933		4	-	4
95	NUS.005	Washer	A; 13 x 24 x 2,5	DIN 125		4	-	4
Stainless steel								
93	NMK.002.EE	Hexagon nut	M 12	DIN 985		-	4	-
94	NSK.030.E	Hexagon head bolt	M 12 x 40	DIN 933		-	4	-
95	NUS.005.E	Washer	A; 13 x 24 x 2,5	DIN 125		-	4	-

(a Design: S = steel, galvanised; E = stainless steel; L = steel, painted

Pipe elbow Compact Position 95-97



Pos.	Part number	Description	Dimensions	Notes	Rep.	S ^(a)	E ^(a)	L ^(a)
96-98	GAS0102	Mounting kit		1.0038 galvanised/NBR		x	-	-
	GAS0108	Mounting kit		1.0038 galvanised/Si				
	GAS0103	Mounting kit		1.4571/NBR		-	x	-
	GAS0109	Mounting kit		1.4571/Si				
	GAS0104	Mounting kit		1.0038 painted/NBR		-	-	x
	GAS0110	Mounting kit		1.0038 painted/Si				

Pos.	Part number	Description	Dimensions	Notes	Rep.	S ^(a)	E ^(a)	L ^(a)
96	DOR.016	O-ring	160 x 7			1	1	1
	DOR.016.SI	O-ring	160 x 7	Silicone				

Steel

97	GAD.030	Pipe elbow		1.0038 galvanised		1	-	-
	GAD0098	Pipe elbow		1.0038 painted		-	-	1
98	NSK.029	Hexagon head screw	M 12 x 35	DIN 933		4	-	4
	NUS.005	Washer	A 13 x 24 x 2,5	DIN 125		4	-	4

Stainless steel

97	GAD0055	Pipe elbow		1.4571		-	1	-
98	NSK.029.EE	Hexagon head screw	M 12 x 35	DIN 933		-	4	-
	NUS.005.E	Washer	A 13 x 24 x 2,5	DIN 125		-	4	-

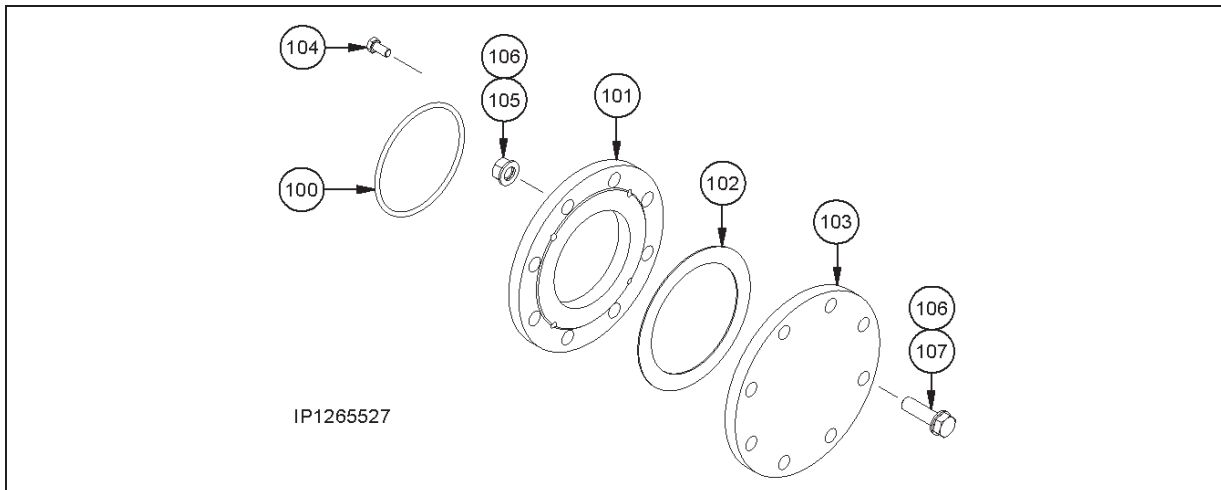
Scraper (Option)

Pos.	Part number	Description	Dimensions	Notes	Rep.	S ^(a)	E ^(a)	L ^(a)
	RFL.975.T1	Scraper		1.0038 galvanized		1	-	-
	RFL.975.T1.E	Scraper		1.4571		-	1	1
	NSK.003.EE	Hexagon head bolt	M 10 x 40	DIN 933			3	
	NMK.001.EE	Hexagon nut	M 10	DIN 988			3	
	NUS.004.E	Washer	A 10.5 x 20 x 2	DIN 125			3	

(a Design: S = steel, galvanised; E = stainless steel; L = steel, painted

Adaptor flange DIN/ANSI

Position 100-107



Pos.	Part number	Description	Dimensions	Notes	Rep.	S ^(a)	E ^(a)	L ^(a)
------	-------------	-------------	------------	-------	------	------------------	------------------	------------------

1.0038

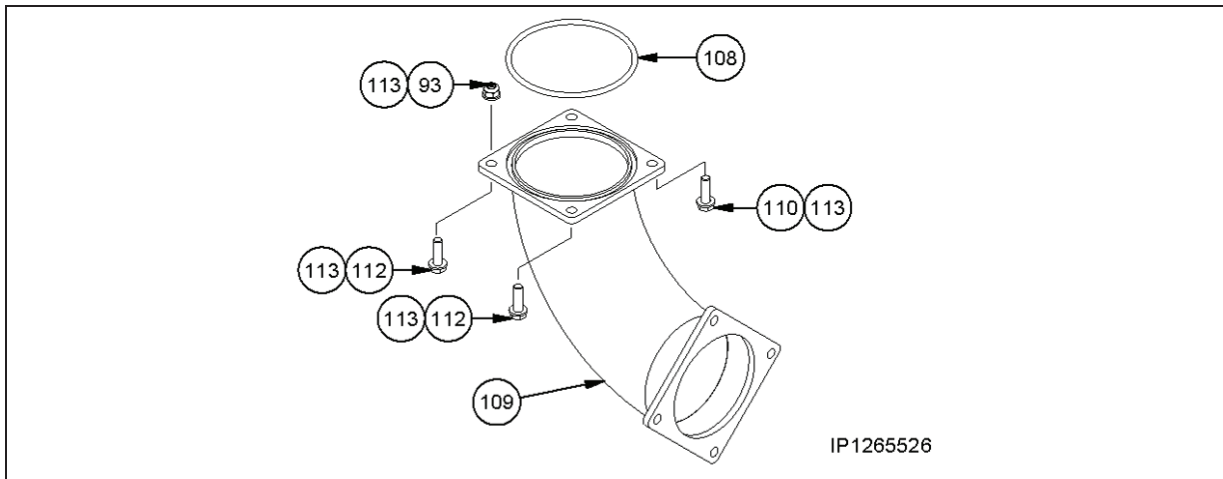
100	DOR.016	O-ring	160 x 7	NBR		1	-	1
101	GFL0165	Adaptor flange	DN 150 – ANSI 6 inch	1.0038 galvanised		1	-	-
	GFL0202	Adaptor flange	DN 150 – ANSI 6 inch	1.0038 painted		-	-	1
102	DFD.054	Flange gasket	DN 150			1	-	1
103	GFL.947	DIN blind flange	DN 150	1.0038 galvanised		1	-	1
	GFL0201	DIN blind flange	DN 150	1.0038 painted		1	-	1
104	NSK.042	Hexagon head bolt	M 12 x 25			4	-	4
105	NMS.007	Hexagon nut	M 20			8	-	8
106	NUS.008	Washer	A 21 x 37 x 3			16	-	16
107	NSK.103	Hexagon head bolt	M 20 x 70			8	-	8

1.4571

100	DOR.016	O-ring	160 x 7	NBR		-	1	-
101	GFL0166	Adaptor flange	DN 150 – ANSI 6 inch	1.4571		-	1	-
102	DFD.054	Flange gasket	DN 150			-	1	-
103	GFL.947.E	DIN blind flange	DN 150	1.4571		-	1	-
104	NSK.042.EE	Hexagon head bolt	M 12 x 25	Stainless steel		-	4	-
105	NMS.007.EE	Hexagon nut	M 20	Stainless steel		-	8	-
106	NUS.008.EE	Washer	A 21 x 37 x 3	Stainless steel		-	16	-
107	NSK.103.EE	Hexagon head bolt	M 20 x 70	Stainless steel		-	8	-

(a Design: S = steel, galvanised; E = stainless steel; L = steel, painted

Pipe elbow BioCut
Positon 108-113

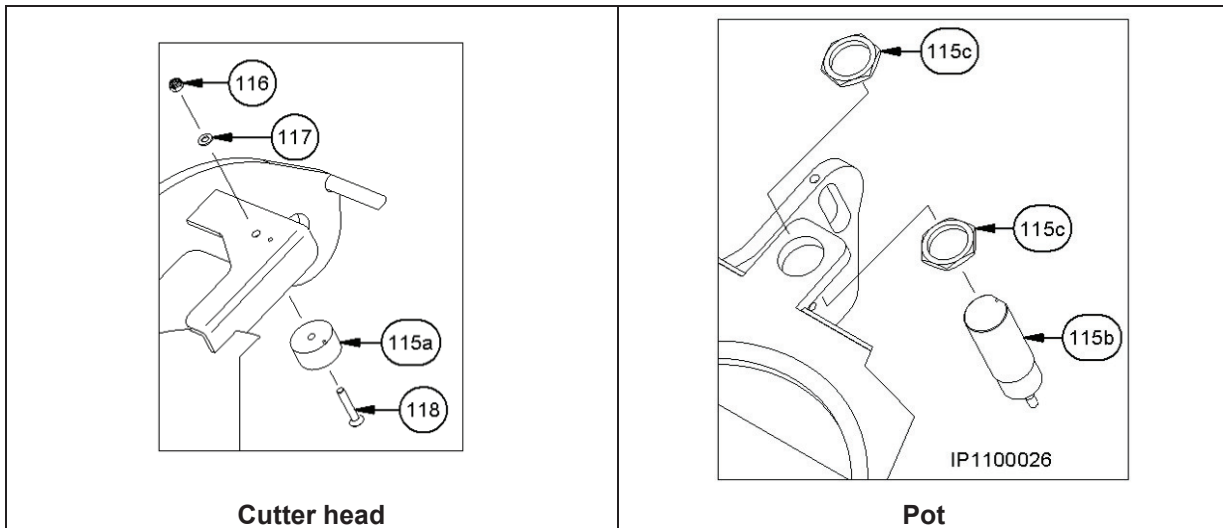


Pos.	Part number	Description	Dimensions	Notes	Rep.	S ^(a)	E ^(a)	L ^(a)
1.0038								
108	DOR.016	O-Ring	160 x 7	NBR		1	-	1
	DOR.016.SI	O-Ring	160 x 7	Silicone				
109	GAD.025.N1	Pipe elbow		1.0038 galvanised		1	-	-
	GAD0101	Pipe elbow		1.0038 painted		-	-	1
110	NSK.029	Hexagon head bolt	M 12 x 35			2	-	2
111	NSK.030	Hexagon head bolt	M 12 x 40			2	-	2
112	NMK.002	Hexagon nut	M 12	Self-locking		2	-	2
113	NUS.005	Washer	A 13 x 24 x 2.5			6	-	6
1.4571								
108	DOR.016	O-Ring	160 x 7	NBR		-	1	-
	DOR.016.SI	O-Ring	160 x 7	Silicone				
109	GAD.025.N1.E	Pipe elbow		1.4571		-	1	-
110	NSK.029.EE	Hexagon head bolt	M 12 x 35			-	2	-
111	NSK.030.E	Hexagon head bolt	M 12 x 40			-	2	-
112	NMK.002.EE	Hexagon nut	M 12	Self-locking		-	2	-
113	NUS.005.E	Washer	A 13 x 24 x 2,5			6	-	

(a Design: S = steel, galvanised; E = stainless steel; L = steel, painted

Safety switch

Detail D



Position 115-118

Pos.	Part number	Description	Dimensions	Notes	Rep.	S ^(a)	E ^(a)	L ^(a)
115	SMD0013	Safety switch		Contains pos.115a-115c		1	1	1
115a	-	Magnetic element				(1)	(1)	(1)
115b	-	Sensor with evaluator				(1)	(1)	(1)
115c	-	Adjusting nut				(2)	(2)	(2)

Steel

116	NMK.034	Hexagon nut	M 5	DIN 934		1	-	1
117	NUS.120	Washer	5.3 x 10 x 1	DIN 125		1	-	1
118	NSE.020.E	Countersunk head bolt	M 5 x 30	ISO 10642		1	-	1

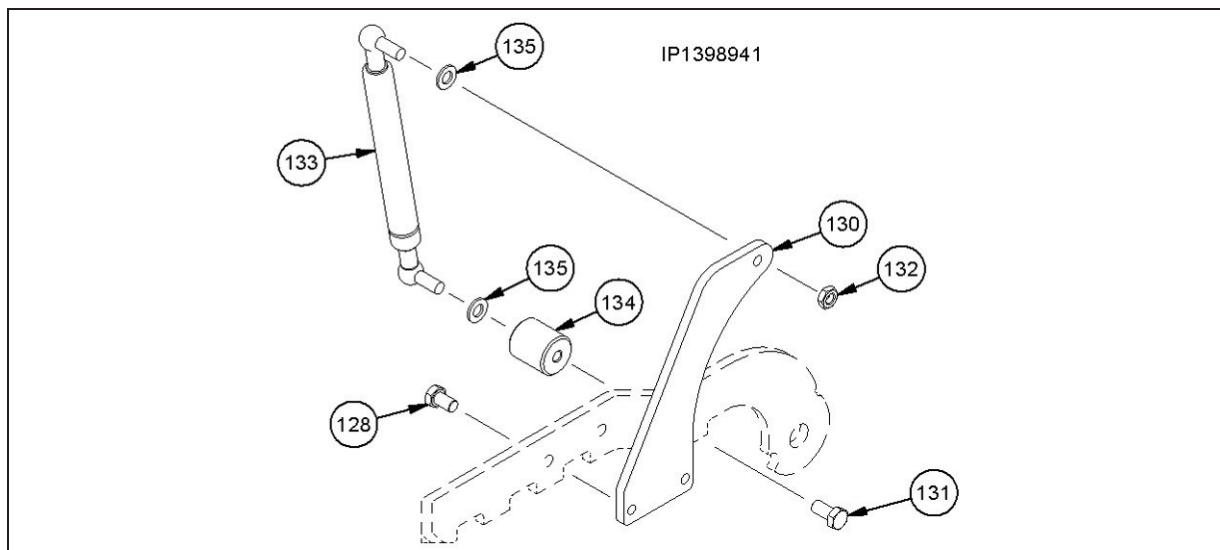
Stainless steel

116	NMK.034.EE	Hexagon nut	M 5	DIN 934		-	1	-
117	NUS.120.E	Washer	5.3 x 10 x 1	DIN 125		-	1	-
118	NSE.020.E	Countersunk head bolt	M 5 x 30	ISO 10642		-	1	-

(a Design: S = steel, galvanised; E = stainless steel; L = steel, painted

Gas spring

Detail E



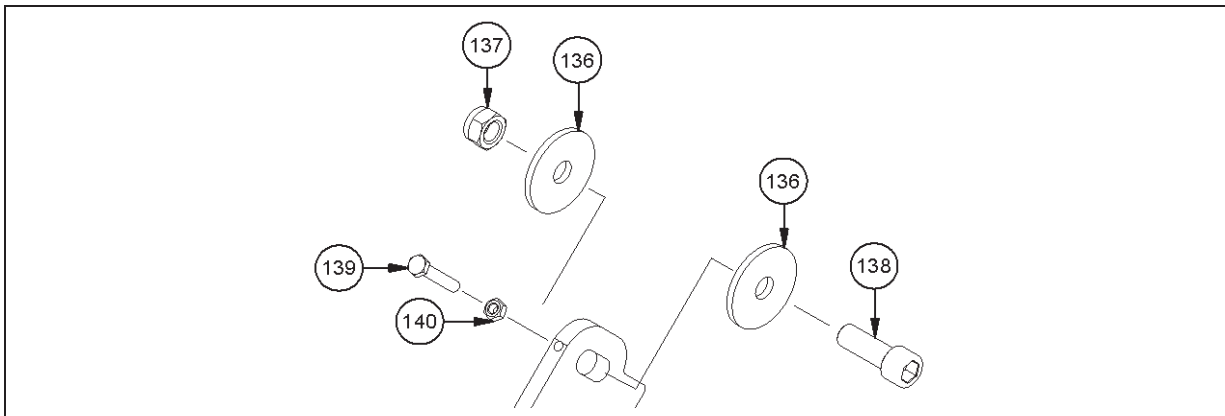
Pos. 128-135

Pos.	Part number	Description	Dimensions	Notes	Rep.	S ^(a)	E ^(a)	L ^(a)
1.0038								
128	NSK.041	Hexagon head screw	M 12 x 20	DIN 933		2	-	2
130	TFL0833	Holder				1	-	1
131	NSK.042	Hexagon head screw	M 12 x 25	DIN 933		1	-	1
132	NMS.004	Hexagon nut	M 12	ISO4032		1	-	1
133	NFE.030	Gas spring				1	-	1
134	PRS0874	Screw connection				1	-	1
135	NUS.005	Washer	A, 13 x 24 x 2,5	DIN 125		2	-	2
1.4571								
128	NSK.041.E	Hexagon head screw	M 12 x 20	DIN 933		-	2	-
130	TFL0959	Holder		1.4571		-	1	-
131	NSK.042.EE	Hexagon head screw	M 12 x 25	DIN 933		-	1	-
132	NMK0009	Hexagon nut	M 12	ISO4032		-	1	-
133	NFE.030	Gas spring				-	1	-
134	PRS1011	Screw connection		1.4571		-	1	-
135	NUS.005.E	Washer	A, 13 x 24 x 2,5	DIN 125		-	2	-

(a Design: S = steel, galvanised; E = stainless steel; L = steel, painted

Pivot

Detail G



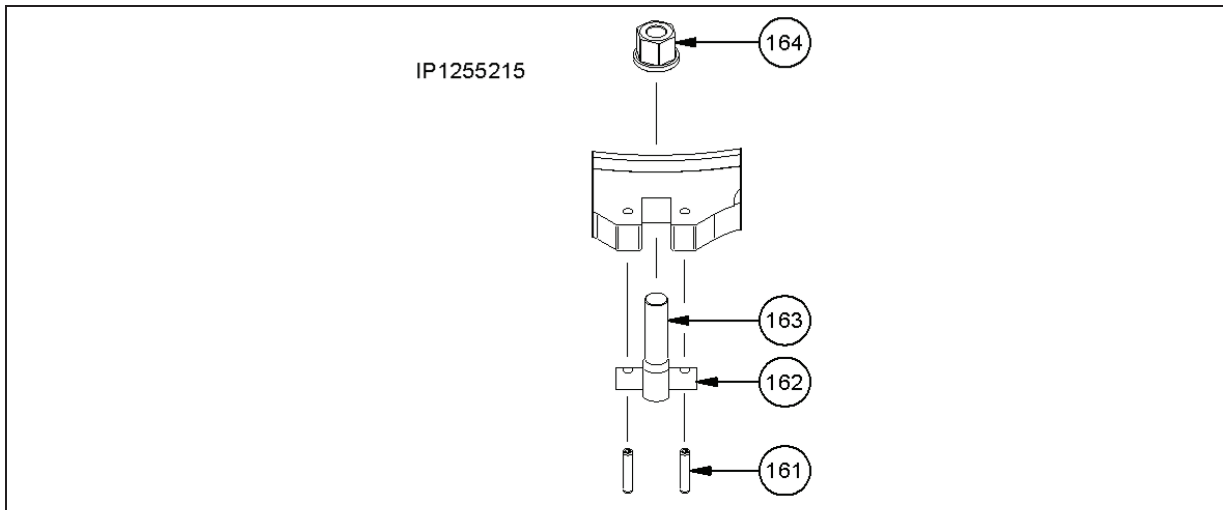
Position 136-140

Pos.	Part number	Description	Dimensions	Notes	Rep.	S ^(a)	E ^(a)	L ^(a)
136	NUS.090	Washer	F; 16 x 5 x 60 x 5	DIN 522		4	-	4
	NUS.090.E	Washer	F; 16 x 5 x 60 x 5	DIN 522		-	4	-
137	NMK.007	Hexagon nut	M 16	DIN 985		2	-	2
	NMK.007.EE	Hexagon nut	M 16	DIN 985		-	2	-
138	NSI.045	Cylinder head bolt	M 16 x 45	ISO 4762		2	-	2
	NSI.045.EE	Cylinder head bolt	M 16 x 45	ISO 4762		-	2	-
139	NSK.126	Hexagon head bolt	M 8 x 45	DIN 933		2	-	2
	NSK.203	Hexagon head bolt	M 8 x 45	DIN 933		-	2	-
140	NMS.002	Hexagon nut	M 8	DIN 934-8		2	-	2
	NMS.002.E	Hexagon nut	M 8	DIN 934-8		-	2	-

(a Design: S = steel, galvanised; E = stainless steel; L = steel, painted

Clamping fastener

Detail H



Position 160-164

Pos.	Part number	Description	Dimensions	Notes	Rep.	S ^(a)	E ^(a)	L ^(a)
Inline/ Cyclone separator:								
161	NSP.031.E	Spring pin	6 mm x 30 mm	ISO8752			4	
162	GRS0253	Take-up shaft	M 12			2	-	2
	GRS0280	Take-up shaft	M 12			-	2	-
163	NSH0004	Eye bolt	M 12 x 60	DIN 444		2	-	2
	NSH0006	Eye bolt	M 12 x 60	DIN 444		-	2	-
164	NMK0003	Hexagon nut	M 12			2	-	2
	NMK.019.EE	Hexagon nut	M 12			-	2	-

Compact + Compact XL + BioCut

161	NSP.031.E	Spring pin	6 mm x 30 mm	ISO8752			8	
162	PRS0675	Take-up shaft	M 14			4	-	4
	PRS0715	Take-up shaft	M 14			-	4	-
163	NSH0012	Eye bolt	M 14 x 70			4	-	4
	NSH0013	Eye bolt	M 14 x 70			-	4	-
164	NMK0022	Hexagon nut	M 14			4	-	4
	NMK0023	Hexagon nut	M 14			-	4	-





Accessories

Pos. 180-182

Pos.	Part number	Description	Dimensions	Notes	Rep.	S ^(a)	E ^(a)	L ^(a)
180	NUS.003	Washer	A; 8.4 x 16 x 1.6	DIN 985		2	-	2
	NUS.003.EE	Washer	A; 8.4 x 16 x 1.6	DIN 985		-	2	-
181	NMK.004	Hexagon nut	M 8	DIN 985		2	-	2
	NMK.004.E	Hexagon nut	M 8	DIN 985		-	2	-
182	NSI.153	Cylinder head bolt	M 8 x 130	ISO 4762		2	-	2
	NSI.126.EE	Cylinder head bolt	M 8 x 120	ISO 4762		-	2	-

(a Design: S = steel, galvanised; E = stainless steel; L = steel, painted

Tools

Pos.	Part number	Description	Dimensions	Notes	Rep.	S ^(a)	E ^(a)	L ^(a)
	GMS0001	Open-end spanner		For ACC width across flats 64			x	
	WKZ.082	Tool for installation the cutting blades					x	
	WKZ.097	Tensioning tool for gas spring NFE.030						
	WKZ0475	Torque bracket					x	
	WKZ0381	Measuring device for adjusting the angle sensor					x	

(a Design: S = steel, galvanised; E = stainless steel; L = steel, painted

Safety sticker

Pos.	Part number	Description	Dimensions	Notes	Rep.	S ^(a)	E ^(a)	L ^(a)
	VAU.013.EN	Sticker					1	
	VAU.133	Sticker					1	
	VAU.014	Sticker					1	
	VAU.109	Sticker					1	
	VAU.012	Sticker					1	
	VAU.130	Sticker					1	

ACC:

	VAU.140.EN	Sticker					1	
--	------------	---------	--	--	--	--	---	--

Cyclone separator

	VAU.142.EN	Sticker					1	
--	------------	---------	--	--	--	--	---	--

INLINE

	VAU.144.EN	Sticker					1	
--	------------	---------	--	--	--	--	---	--

Compact + Compact XL + BioCut

	VA0054.EN	Sticker					1	
--	-----------	---------	--	--	--	--	---	--

(a Design: S = steel, galvanised; E = stainless steel; L = steel, painted)

Required spare parts for mechanical seal change

Pos.	Part number	Description	Dimensions	Notes	Rep.	S ^(a)	E ^(a)	L ^(a)
5	DFD.107	Cell PU sealing ring						1
21	DWD.023	Rotary shaft seal	55 x 70 x 7/7.5	NBR				1
23	DGL.B012	Mechanical seal	76.90-H-02 A1	Duronit				2
	DGL.B012.SC	Mechanical seal	76.90-H-02 A1	SiSiC (silicon carbide)				
24	DOR.034.HNB	O-ring	72.5 x 6.5	HNBR				2
	DOR.034.VI	O-ring	72.5 x 6.5	FPM				
28	NPF.061	Fitting key	AB 14 x 9 x 62					1
30	IBA1438	Inner ring unit						1
31	DOR0262	O-ring	Ø 42 mm x 3.5 mm	NBR				1
32	DOR.017	O-ring	Ø 55 mm x .,5 mm	NBR				1
NBR								
49	DOR.046	O-ring	96 x 3	NBR				1
50	DOR.072	O-ring	45 x 3	NBR				1
51	DOR.021	O-ring	24 x 3	NBR				1
52	DOR.079	O-ring	18.4 x 2.7	NBR				1
FPM (Option)								
49	DOR.046.VI	O-ring	96 x 3	FPM				1
50	DOR.072.VI	O-ring	45 x 3	FPM				1
51	DOR.021.VI	O-ring	24 x 3	FPM				1
52	DOR.079.VI	O-ring	18.4 x 2.7	FPM				1

(a Design: S = steel, galvanised; E = stainless steel; L = steel, painted

Necessary spare parts for blade change

Pos.	Part number	Description	Dimensions	Notes	Rep.	S ^(a)	E ^(a)	L ^(a)
5	DFD.107	Cell PU sealing ring					1	

Steel

8	GFL.421.N1.M9	Cutting screen	Max. ø 24 mm	Medium; t = 12 mm		1	-	1
	GFL.430.N1.M9	Cutting screen	Max. ø 15 mm	Fine				
	GFL.150.N3.M9	Cutting screen	Max. ø 30 mm	Coarse				
	GFL.543.M9	Cutting screen	Max. ø 4 mm	Honey combs				
	GFL.572.M9	Cutting screen	Max. ø 6 mm	Honey combs				
	GFL.499.N1.M9	Cutting screen	Max. ø 8 mm	Honey combs				
	GFL.511.N1.M9	Cutting screen	Max. ø 10 mm	Honey combs				
	GFL.497.M9	Cutting screen	Max. ø 12 mm	Honey combs				
GFL.493.M9	Cutting screen	Max. ø 15 mm	Honey combs					

Stainless steel

8	GFL.421.N1.E3	Cutting screen	Max. ø 24 mm	Medium; t=12 mm		-	1	-
	GFL.430.N1.E3	Cutting screen	Max. ø 15 mm	Fine				
	GFL.150.N3.E3	Cutting screen	Max. ø 30 mm	Coarse				
	GFL.543.E3	Cutting screen	Max. ø 4 mm	Honey combs				
	GFL.572.E3	Cutting screen	Max. ø 6 mm	Honey combs				
	GFL.499.N1.E3	Cutting screen	Max. ø 8 mm	Honey combs				
	GFL.511.N1.E3	Cutting screen	Max. ø 10 mm	Honey combs				
	GFL.497.E3	Cutting screen	Max. ø 12 mm	Honey combs				
GFL.493.E3	Cutting screen	Max. ø 15 mm	Honey combs					
		Max. ø = max. free passage						

The cutting screen **pos. 8** can be turned **once** so it doesn't have to be replaced until the next cutting blade change!

11	GSM.005.T1.E4	Cutting blade	8 mm	→ GFM.016.N2 high version		4
	GSM.015.T1.E4	Cutting blade	5 mm	→ GFM.022.N2.T1 high version		6 **
12	NSP.030.E	Spring pin	10 x 30			4 / 6 **
	NSP.031.E	Spring pin	6 x 30			4 / 6 **
13	ZDFD.390.0135	Polyethylene cord				4 / 6 **

NBR

49	DOR.046	O-ring	96 x 3	NBR		1
50	DOR.072	O-ring	45 x 3	NBR		1
51	DOR.021	O-ring	24 x 3	NBR		1
52	DOR.079	O-ring	18.4 x 2.7	NBR		1

FPM (Option)

49	DOR.046.VI	O-ring	96 x 3	FPM		1
50	DOR.072.VI	O-ring	45 x 3	FPM		1
51	DOR.021.VI	O-ring	24 x 3	FPM		1
52	DOR.079.VI	O-ring	18.4 x 2.7	FPM		1

** Quantities or parts in case of rotor with 6 wings

(a Design: S = steel, galvanised; E = stainless steel; L = steel, painted

Required spare parts for wear part replacement

Pos.	Part number	Description	Dimensions	Notes	Rep.	S ^(a)	E ^(a)	L ^(a)
3	GSW.019	Drive shaft					1	
5	DFD.107	Cell PU sealing ring					1	
Steel								
8	GFL.421.N1.M9	Cutting screen	Max. ø 24 mm	Medium; t = 12 mm		1	-	1
	GFL.430.N1.M9	Cutting screen	Max. ø 15 mm	Fine				
	GFL.150.N3.M9	Cutting screen	Max. ø 30 mm	Coarse				
	GFL.543.M9	Cutting screen	Max. ø 4 mm	Honey combs				
	GFL.572.M9	Cutting screen	Max. ø 6 mm	Honey combs				
	GFL.499.N1.M9	Cutting screen	Max. ø 8 mm	Honey combs				
	GFL.511.N1.M9	Cutting screen	Max. ø 10 mm	Honey combs				
	GFL.497.M9	Cutting screen	Max. ø 12 mm	Honey combs				
GFL.493.M9	Cutting screen	Max. ø 15 mm	Honey combs					
Stainless steel								
8	GFL.421.N1.E3	Cutting screen	Max. ø 24 mm	Medium; t=12 mm		-	1	-
	GFL.430.N1.E3	Cutting screen	Max. ø 15 mm	Fine				
	GFL.150.N3.E3	Cutting screen	Max. ø 30 mm	Coarse				
	GFL.543.E3	Cutting screen	Max. ø 4 mm	Honey combs				
	GFL.572.E3	Cutting screen	Max. ø 6 mm	Honey combs				
	GFL.499.N1.E3	Cutting screen	Max. ø 8 mm	Honey combs				
	GFL.511.N1.E3	Cutting screen	Max. ø 10 mm	Honey combs				
	GFL.497.E3	Cutting screen	Max. ø 12 mm	Honey combs				
GFL.493.E3	Cutting screen	Max. ø 15 mm	Honey combs					
		Max. ø = max. free passage						
The cutting screen pos. 8 can be turned once so it doesn't have to be replaced until the next cutting blade change!								
10	GFM.016.N2	Blade rotor		4-wing; groove 8 mm		1		
	GFM.022.N2.T1	Blade rotor		6-wing; groove 5 mm				
11	GSM.005.T1.E4	Cutting blade	8 mm	→ GFM.016.N2 high version		4		
	GSM.015.T1.E4	Cutting blade	5 mm	→ GFM.022.N2.T1 high version		6**		
12	NSP.030.E	Spring pin	10 x 30			4 / 6**		
	NSP.031.E	Spring pin	6 x 30			4 / 6**		
13	ZDFD.390.0135	Polyethylene cord				4 / 3* / 6**		
14-22	GRT.477.N1	Geared motor adaptor		Pre-installed		x	-	x
	GRT.477.N1.E	Geared motor adaptor		Pre-installed, stainless steel		-	x	-
21	DWD.023	Rotary shaft seal	55 x 70 x 7/7.5	NBR		1		
23	DGL.B012	Mechanical seal	76.90-H-02 A1	Duronit		2		
	DGL.B012.SC	Mechanical seal	76.90-H-02 A1	SiSiC (silicon carbide)				
24	DOR.034.HNB	O-ring	72.5 x 6.5	HNBR		2		
	DOR.034.VI	O-ring	72.5 x 6.5	FPM				
28	NPF.061	Fitting key	AB 14 x 9 x 62			1		
30	IBA1438	Inner ring unit				1		
31	DOR0262	O-ring	Ø 42 mm x 3.5 mm	NBR		1		
32	DOR.017	O-ring	Ø 55 mm x .,5 mm	NBR		1		

** Quantities or parts in case of rotor with 6 wings

Continuation see next page

Pos.	Part number	Description	Dimensions	Notes	Rep.	S ^(a)	E ^(a)	L ^(a)
NBR								
49	DOR.046	O-ring	96 x 3	NBR				1
50	DOR.072	O-ring	45 x 3	NBR				1
51	DOR.021	O-ring	24 x 3	NBR				1
52	DOR.079	O-ring	18.4 x 2.7	NBR				1
FPM (Option)								
49	DOR.046.VI	O-ring	96 x 3	FPM				1
50	DOR.072.VI	O-ring	45 x 3	FPM				1
51	DOR.021.VI	O-ring	24 x 3	FPM				1
52	DOR.079.VI	O-ring	18.4 x 2.7	FPM				1

(a Design: S = steel, galvanised; E = stainless steel; L = steel, painted

VOGELSANG**Hugo Vogelsang Maschinenbau GmbH**

Holthöge 10-14
49632 Essen/Oldb.

Phone: +49 (0) 54 34 83 0
Fax: +49 (0) 54 34 83 10

vogelsang-gmbh.com
info@vogelsang-gmbh.com

ENGINEERED TO WORK

Australien
Vogelsang Pty. Ltd.
vogelsang.com.au

Indien
Vogelsang India Private Limited
vogelsangindia.com

Russland
Vogelsang Russland
vogelsang.ru

Brasilien
Vogelsang Brasil Ltda.
vogelsang.com.br

Irland
Vogelsang Ireland
vogelsang.ie

Schweden
Vogelsang Sverige AB
vogelsang.se

China
Vogelsang Mechanical Engineering (Shanghai) Co., Ltd.
vogelsang.com.cn

Italien
Vogelsang Italy Srl
vogelsang-srl.it

Spanien
Vogelsang S.L.
vogelsang.es

Dänemark
Vogelsang A/S
vogelsang-as.dk

Malaysia
Vogelsang Malaysia
vogelsang.info

Südkorea
Vogelsang Korea Co., Ltd.
vogelsang.co.kr

Deutschland - Niederlassung Ost
Vogelsang Lutherstadt Eisleben
vogelsang-gmbh.com

Mexico
Vogelsang De México S.de R.L. de CV
vogelsang.mx

Tschechische Republik
Vogelsang CZ s.r.o.
vogelsang-czech.cz

Finnland
Vogelsang Oy
vogelsang.fi

Polen
Vogelsang Poland Sp. z o.o.
vogelsang.pl

USA
Vogelsang USA Ltd.
vogelsangusa.com

Frankreich
Vogelsang France S.A.R.L.
vogelsang.fr

Österreich
Vogelsang Austria GmbH
vogelsang-austria.at

Großbritannien
Vogelsang Ltd.
vogelsang.co.uk

Rumänien
Vogelsang Romania SRL
vogelsang.ro