



# Spare Parts List

**RotaCut®**

**5000 hydraulic motor**

ENGINEERED TO WORK



**Spare parts list valid from delivery 2013-10-28****Issuer**

Hugo Vogelsang Maschinenbau GmbH  
Holthöge 10-14  
49632 Essen/Oldb.

Phone: +49 54 34 83 0  
Fax: +49 54 34 83 10

vogelsang-gmbh.com  
info@vogelsang-gmbh.com

In the absence of express, written authorisation from the issuer, the reproduction or partial reproduction of this document in any form is prohibited.

We reserve the right to make technical modifications to the diagrams and information presented in this document in the event that such modifications become necessary for the enhancement of the machine.

© 2016 Hugo Vogelsang Maschinenbau GmbH

**Registered trademarks of Vogelsang**

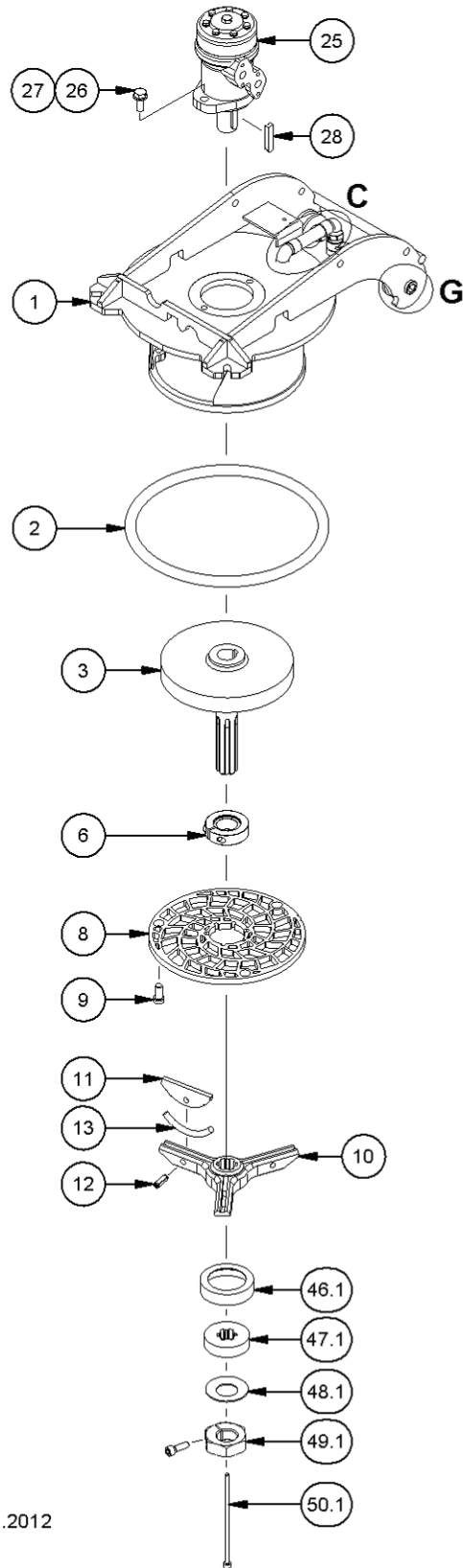
Vogelsang, RotaCut, PreMix, HiFlo, ACC, CFC, BioCrack, XTill, EnergyJet, BioCut, CC series, PreMix, ProTerra and VarioCrop are registered trademarks of Hugo Vogelsang Maschinenbau GmbH.

The registered trademarks are not always designated with an ® symbol in this document.

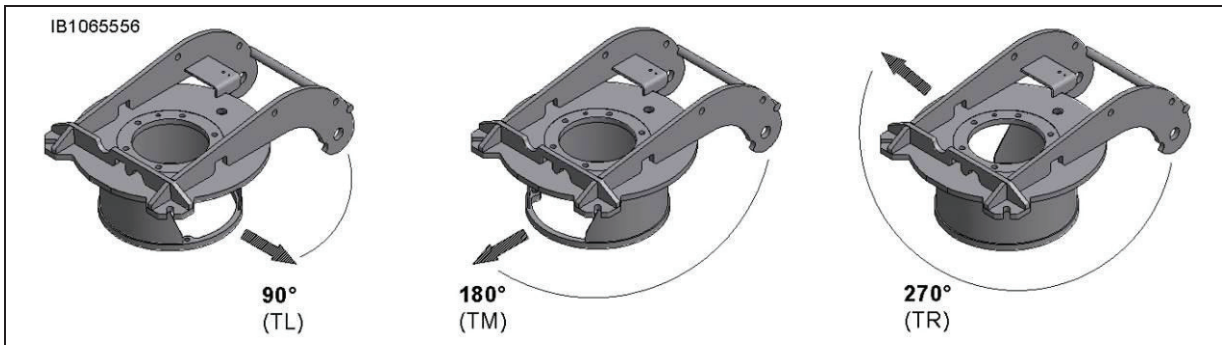
## Contents

Figure: Cutter head .....	4
<b>Cutter head</b> .....	<b>5</b>
Position 1-2 .....	5
<b>Flywheel and accessories</b> .....	<b>5</b>
Position 3-6 .....	5
<b>Option: External gap sealing</b> .....	<b>6</b>
<b>Cutting screen</b> .....	<b>7</b>
Position 8-9 .....	7
<b>Blade rotor</b> .....	<b>7</b>
Position 10 .....	7
<b>Blade and accessories</b> .....	<b>7</b>
Position 11-13 .....	7
<b>Hydraulic motor</b> .....	<b>8</b>
Position 25-28 .....	8
<b>Manual preload</b> .....	<b>8</b>
Pos. 46.1-52.1 .....	8
<b>Pot</b> .....	<b>9</b>
Position 90 .....	9
<b>INLINE</b> .....	<b>9</b>
<b>Cyclone separator</b> .....	<b>10</b>
<b>Blind flange + accessories</b> .....	<b>11</b>
Position 91-95 .....	11
<b>Adaptor flange DIN/ANSI</b> .....	<b>12</b>
Position 100-107 .....	12
<b>Safety device option I</b> .....	<b>13</b>
<b>Hydraulic reverse valve</b> .....	<b>13</b>
Pos. 115-126 .....	13
<b>Safety device option II</b> .....	<b>14</b>
<b>Safety switch</b> .....	<b>14</b>
<b>Detail D</b> .....	<b>14</b>
Position 115-118 .....	14
<b>Gas spring</b> .....	<b>15</b>
<b>Detail E</b> .....	<b>15</b>
Pos. 128-135 .....	15
<b>Pivot</b> .....	<b>16</b>
<b>Detail G</b> .....	<b>16</b>
Position 136-140 .....	16
<b>Clamping fastener</b> .....	<b>17</b>
<b>Detail H</b> .....	<b>17</b>
Position 160-164 .....	17
<b>Safety sticker</b> .....	<b>18</b>
<b>Tools</b> .....	<b>19</b>
<b>Safety sticker</b> .....	<b>19</b>
<b>Necessary spare parts for blade change</b> .....	<b>19</b>
<b>Required spare parts for wear part replacement</b> .....	<b>21</b>

Figure: Cutter head



IP1267432 15.11.2012



**Cutter head**

Position 1-2

Pos.	Part number	Description	Dimensions	Notes	Rep.	S <sup>(a)</sup>	E <sup>(a)</sup>	L <sup>(a)</sup>
<b>1.0038 galvanized</b>								
1	GSK0146	Cutter head	180° (TM)			1	-	-
	GSK0147	Cutter head	90° (TL)					
	GSK0148	Cutter head	270° (TR)					
2	DOR0022	O-ring	393 x 18	NBR		1		
	DOR.074.SI	O-ring	407 x 18	MVQ				

**Flywheel and accessories**

Position 3-6

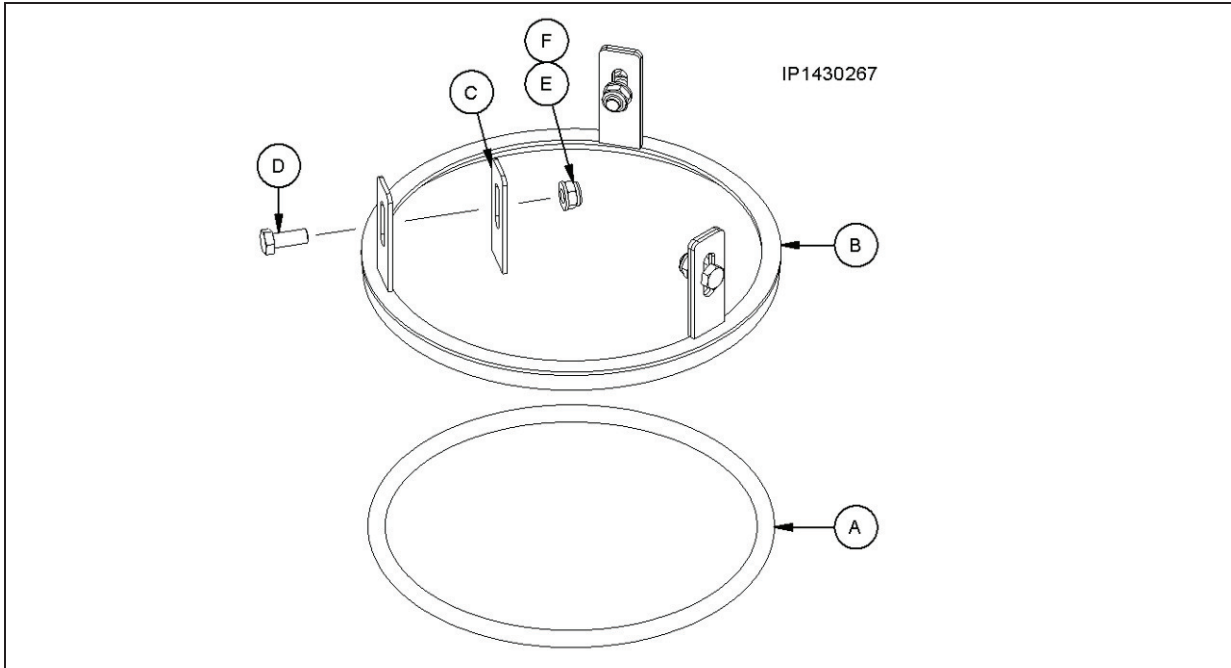
Pos.	Part number	Description	Dimensions	Notes	Rep.	S <sup>(a)</sup>	E <sup>(a)</sup>	L <sup>(a)</sup>
3	GSW.003	Flywheel						1

**Steel**

6	GAS.019	Internal gap sealing		1.0038		1	-	1
	NSI.006	Cylinder head bolt	M 10 x 30	Included in GAS.019		1	-	1

(a Design: S = steel, galvanized; E = stainless steel; L = steel, painted

**Option: External gap sealing**



Pos.	Part number	Description	Dimensions	Notes	Rep.	S <sup>(a)</sup>	E <sup>(a)</sup>	L <sup>(a)</sup>
	GAS.014.T1	External gap sealing		Steel		(1)	-	(1)
	GAS.014.T1.E	External gap sealing		Stainless steel		-	(1)	
A	DOR.132	O-ring	Ø 330 mm x 12 mm				1	
B	GVE.002.T1	Welded assembly		1.0038		1	-	1
	GVE.002.T1.E	Welded assembly		1.4571		-	1	
C	GFL.548.T1	Bracket		1.0038		3	-	3
	LFL.548.T1.E	Bracket		1.4571		-	3	
D	NSK.027	Hexagon head bolt	M 10 x 25			3	-	3
	NSK.027.EE	Hexagon head bolt	M 10 x 25			-	3	
E	NMK.001	Hexagon nut	M 10			3	-	3
	NMK.001.EE	Hexagon nut	M 10			-	3	
F	NUS.004	Washer	A 10,5 x 20 x 2			3	-	3
	NUS.004	Washer	A 10,5 x 20 x 2			-	3	

(a Design: S = steel, galvanised; E = stainless steel; L = steel, painted

5000 hydraulic motor

**Cutting screen****Position 8-9**

Pos.	Part number	Description	Dimensions	Notes	Rep.	S <sup>(a)</sup>	E <sup>(a)</sup>	L <sup>(a)</sup>
<b>Steel</b>								
8	GFL.421.N1.M9	Cutting screen	Max. ø 24 mm	Medium; t = 12 mm		1	-	1
	GFL.430.N1.M9	Cutting screen	Max. ø 15 mm	Fine				
	GFL.150.N3.M9	Cutting screen	Max. ø 30 mm	Coarse				
	GFL.543.M9	Cutting screen	Max. ø 4 mm	Honey combs				
	GFL.572.M9	Cutting screen	Max. ø 6 mm	Honey combs				
	GFL.499.N1.M9	Cutting screen	Max. ø 8 mm	Honey combs				
	GFL.511.N1.M9	Cutting screen	Max. ø 10 mm	Honey combs				
	GFL.497.M9	Cutting screen	Max. ø 12 mm	Honey combs				
GFL.493.M9	Cutting screen	Max. ø 15 mm	Honey combs					

**Stainless steel**

8	GFL.421.N1.E3	Cutting screen	Max. ø 24 mm	Medium; t=12 mm		-	1	-
	GFL.430.N1.E3	Cutting screen	Max. ø 15 mm	Fine				
	GFL.150.N3.E3	Cutting screen	Max. ø 30 mm	Coarse				
	GFL.543.E3	Cutting screen	Max. ø 4 mm	Honey combs				
	GFL.572.E3	Cutting screen	Max. ø 6 mm	Honey combs				
	GFL.499.N1.E3	Cutting screen	Max. ø 8 mm	Honey combs				
	GFL.511.N1.E3	Cutting screen	Max. ø 10 mm	Honey combs				
	GFL.497.E3	Cutting screen	Max. ø 12 mm	Honey combs				
GFL.493.E3	Cutting screen	Max. ø 15 mm	Honey combs					
		Max. ø = max. free passage						
9	GRS.203.EE	Clamp bolt				3	3	3
	GRS.202	Spring pin				3	-	3
	GRS.202.EE	Spring pin				-	3	-

**Blade rotor****Position 10**

Pos.	Part number	Description	Dimensions	Notes	Rep.	S <sup>(a)</sup>	E <sup>(a)</sup>	L <sup>(a)</sup>
10	GFM.021.N2	Blade rotor		4 wings; groove 8 mm		1	1	1
	GFM.003.N2	Blade rotor		3 wings; groove 8 mm				

**Blade and accessories****Position 11-13**

Pos.	Part number	Description	Dimensions	Notes	Rep.	S <sup>(a)</sup>	E <sup>(a)</sup>	L <sup>(a)</sup>
11	GSM.005	Cutting blade	8 mm	+ NSP.006		4 3*	-	4 3*
11	GSM.005.E4	Cutting blade; stainless steel	8 mm	+ NSP.030.E + NSP.031.E		4 / 3*		
12	NSP.006	Spring pin	10 x 30	→ GSM.005		4 3*	-	4 3*
12	NSP.030.E	Spring pin	10 x 30	→ GSM.005.E		4 / 3*		
	NSP.031.E	Spring pin	6 x 30			4 / 3*		
13	ZDFD.390.0135	PE cord				4 / 3*		

\* Quantities or parts in case of rotor with 3 wings

(a Design: S = steel, galvanised; E = stainless steel; L = steel, painted

5000 hydraulic motor

**Hydraulic motor****Position 25-28**

Pos.	Part number	Description	Dimensions	Notes	Rep.	S <sup>(a)</sup>	E <sup>(a)</sup>	L <sup>(a)</sup>
25	AOM.020	Hydraulic motor	OMR 100	Ø 32		1		
	AOM.014	Hydraulic motor	OMR 125	Ø 32				
	AOM.015	Hydraulic motor	OMS 160	Ø 32				
	AOM.017	Hydraulic motor	OMS 200	Ø 32				
26	NUS.005	Washer	A 13 x 24 x 2.5	DIN 125		2		
27	NSK.028	Hexagon head bolt	M 12 x 36	DIN 933		2		
28	NPF.066	Fitting key	A 10 x 8 x 45			1		
39	HRS0253	Pipe double nipple	3/4 inch x 100 mm			1	-	1
	NVE0038	Pipe double nipple	3/4 inch x 100 mm	1.4571		-	1	-
40	GHN.013	Ball valve	3/4 inch				1	

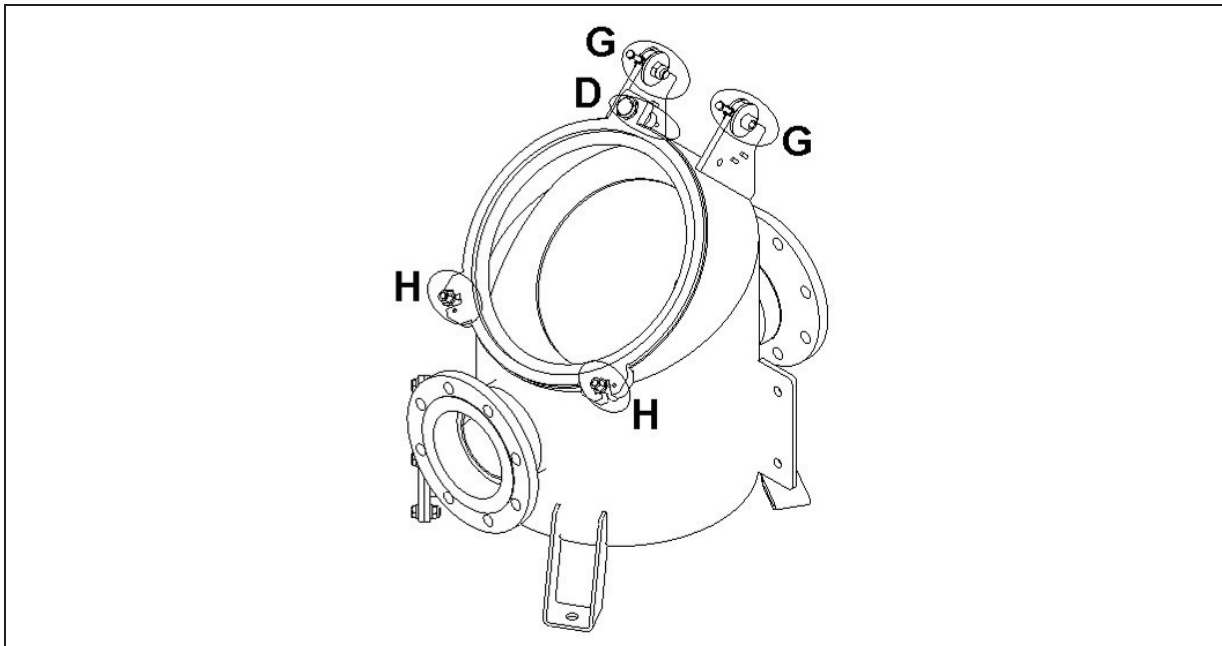
**Manual preload****Pos. 46.1-52.1**

Pos.	Part number	Description	Dimensions	Notes	Rep.	S <sup>(a)</sup>	E <sup>(a)</sup>	L <sup>(a)</sup>
46.1	PRS.100	Protection for rubber discs + spring washers				1	1	1
47.1	DFD.110	Rubber disc				1	1	1
48.1	NTF.001	Spring washer				1	1	1
49.1	NMS.016	Tensioning nut		With locking screw		1	1	1
50.1	NSI.018	Cylinder head bolt	M 8 x 180	ISO 4762		1	-	-

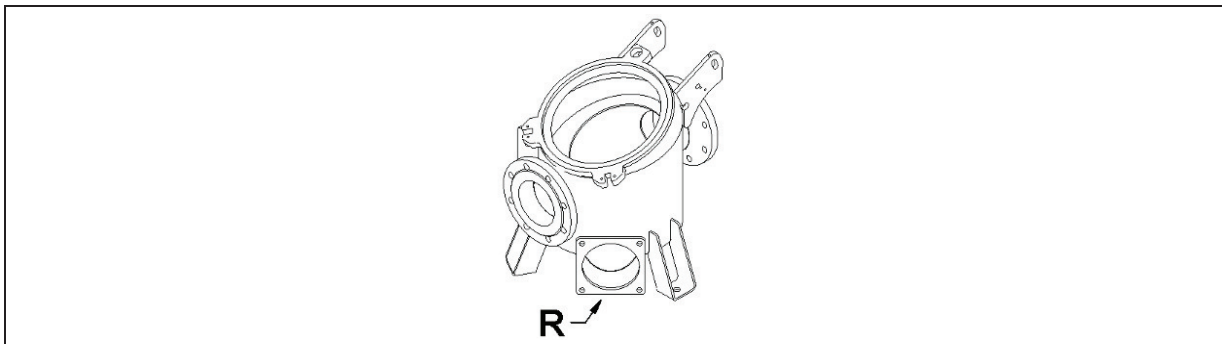
(a Design: S = steel, galvanised; E = stainless steel; L = steel, painted



**Pot**  
**Position 90**



**INLINE**



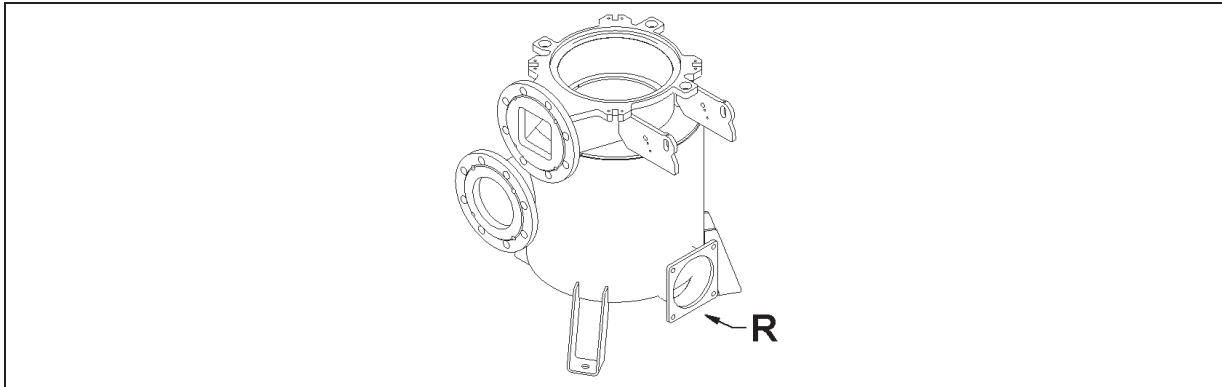
**R1:** Cleaning port 6 inch + blind flange 6 inch (pos. 91-94)  
**R2:** Cleaning port 6 inch + adaptor flange 6 inch DIN/ ANSI (pos.100-107)

Pos.	Part number	Description	Dimensions	Notes	Rep.	S <sup>(a)</sup>	E <sup>(a)</sup>	L <sup>(a)</sup>
<b>1.0038 galvanised</b>								
90	GRC0341	Pot Inline	DN 125/ DN125	(* left		1	-	-
	GRC0334	Pot Inline	DN 150/ DN 150	(* right				
	GRC0337	Pot Inline	DN 150/ DN 150	(* left				
	GRC0339	Pot Inline	6 inch/ 6 inch (ANSI-Flansch)	(* right				
	GRC0340	Pot Inline	6 inch/ 6 inch (ANSI-Flansch)	(* left				
<b>1.4571</b>								
90	GRC0335	Pot Inline	DN 150/ DN 150	(* right		-	1	-
	GRC0338	Pot Inline	DN 150/ DN 150	(* left				
	GRC0355	Pot Inline	DN 100/ DN 100	(* right				
	GRC0388	Pot Inline	6 inch/ 6 inch (ANSI flange)	(* right				
	GRC0389	Pot Inline	6 inch/ 6 inch (ANSI flange)	(* left				
<b>1.0038 painted</b>								
90	GRC0336	Pot Inline	DN 150/ DN 150	(* right		-	-	1

(\* Position of cleaning port

(a Design: S = steel, galvanised; E = stainless steel; L = steel, painted

**Cyclone separator**



R: Cleaning port 8 inch + blind flange 8 inch (pos. 91-95)

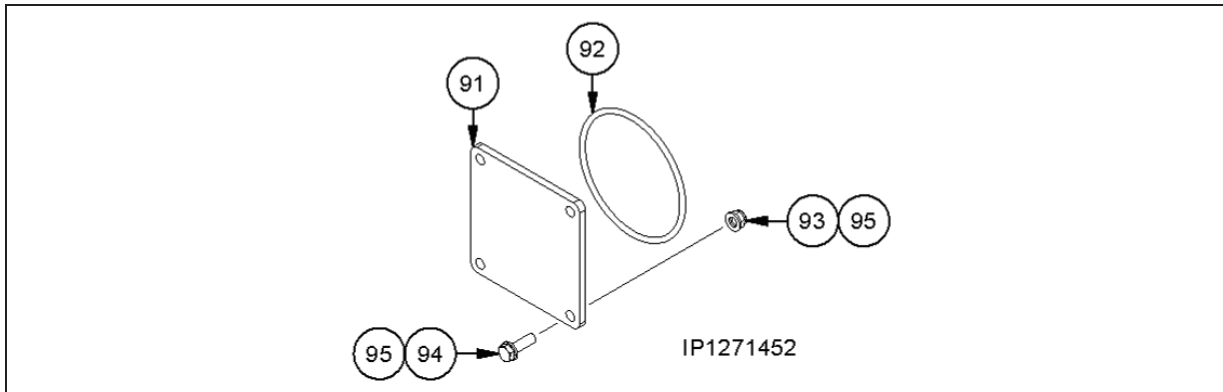
Pos.	Part number	Description	Dimensions	Notes	Rep.	S <sup>(a)</sup>	E <sup>(a)</sup>	L <sup>(a)</sup>
<b>1.0038 galvanised</b>								
90	GRC0347	Cyclone separator	DN 200/ DN 200	(**		1	-	-
	GRC0378	Cyclone separator	DN 200/ DN 200	Mounting of three-point base (**				
<b>1.0038 painted</b>								
90	GRC0380	Cyclone separator	DN 200/ DN 200	(**		1	-	-
	GRC0381	Cyclone separator	DN 200/ DN 200	Mounting of three-point base (**				

(\*\* custom welded as per TINF.RC.005.DE.EN

(a Design: S = steel, galvanised; E = stainless steel; L = steel, painted

**Blind flange + accessories**

Position 91-95



**6 inch**

Pos.	Part number	Description	Dimensions	Notes	Rep.	S <sup>(a)</sup>	E <sup>(a)</sup>	L <sup>(a)</sup>
91-95	GAS0001	Mounting kit blind flange	6 inch	NBR; 1.0038 galvanised		x	-	-
	GAS0002	Mounting kit blind flange	6 inch	NBR; 1.4571		-	x	-
	GAS0004	Mounting kit blind flange	6 inch	NBR; 1.0038 painted		-	-	x
	GAS0031	Mounting kit blind flange	6 inch	MVQ; 1.0038 galvanised		x	-	-
	GAS0032	Mounting kit blind flange	6 inch	MVQ; 1.4571		-	x	-
	GAS0033	Mounting kit blind flange	6 inch	MVQ; 1.0038 painted		-	-	x
91	GFL.459	Blind flange	6 inch	1.0038 galvanised		1	-	-
	GFL.459.E	Blind flange	6 inch	1.4571		-	1	-
	GFL0216	Blind flange	6 inch	1.0038 painted		-	-	1
92	DOR.016	O-ring	160 x 7	NBR		1	1	1
	DOR.016.SI	O-ring	160 x 7	MVQ; FEP coated				

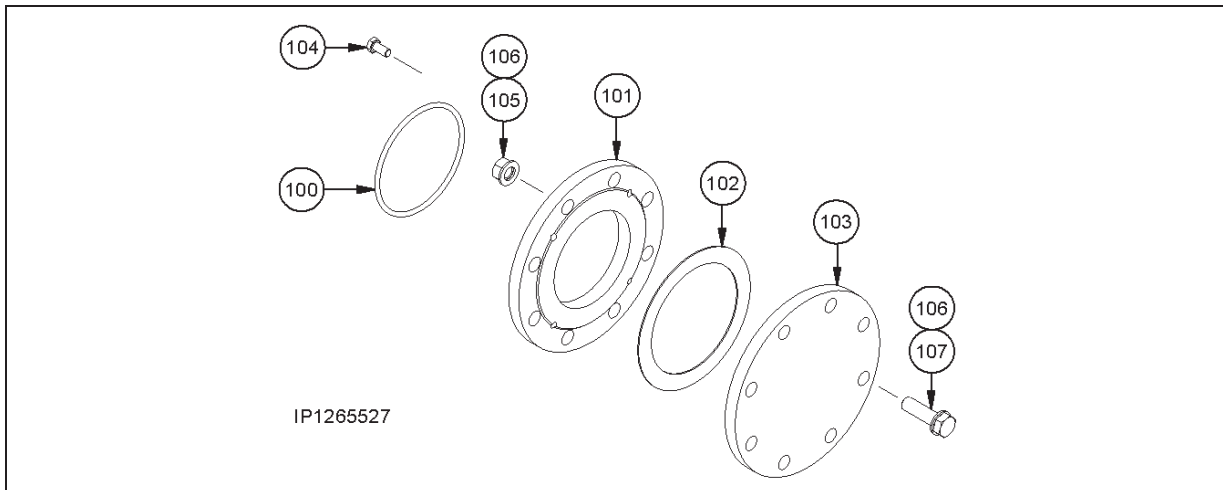
**8 inch**

Pos.	Part number	Description	Dimensions	Notes	Rep.	S <sup>(a)</sup>	E <sup>(a)</sup>	L <sup>(a)</sup>
91-95	GAS0005	Mounting kit blind flange	8 inch	NBR; 1.0038 galvanised		x	-	-
	GAS0006	Mounting kit blind flange	8 inch	NBR; 1.4571		-	x	-
	GAS0008	Mounting kit blind flange	8 inch	NBR; 1.0038 painted		-	-	x
	GAS0034	Mounting kit blind flange	8 inch	MVQ; 1.0038 galvanised		x	-	-
	GAS0035	Mounting kit blind flange	8 inch	MVQ; 1.4571		-	x	-
	GAS0036	Mounting kit blind flange	8 inch	MVQ; 1.0038 painted		-	-	x
91	GFL.011.T1	Blind flange	8 inch	1.0038 galvanised		1	-	-
	GFL.011.E.T1	Blind flange	8 inch	1.4571		-	1	-
	GFL.011.FS	Blind flange	8 inch	1.0038 painted		-	-	1
92	DOR.018	O-ring	204 x 7	NBR		1	1	1
	DOR.018.SI	O-ring	202,6 x 6,9	MVQ; FEP coated				

Pos.	Part number	Description	Dimensions	Notes	Rep.	S <sup>(a)</sup>	E <sup>(a)</sup>	L <sup>(a)</sup>
<b>Steel</b>								
93	NMK.002	Hexagon nut	M 12	DIN 985		4	-	4
94	NSK.030.E	Hexagon head bolt	M 12 x 40	DIN 933		4	-	4
95	NUS.005	Washer	A; 13 x 24 x 2,5	DIN 125		4	-	4
<b>Stainless steel</b>								
93	NMK.002.EE	Hexagon nut	M 12	DIN 985		-	4	-
94	NSK.030.E	Hexagon head bolt	M 12 x 40	DIN 933		-	4	-
95	NUS.005.E	Washer	A; 13 x 24 x 2,5	DIN 125		-	4	-

(a Design: S = steel, galvanised; E = stainless steel; L = steel, painted

**Adaptor flange DIN/ANSI**  
Position 100-107



Pos.	Part number	Description	Dimensions	Notes	Rep.	S <sup>(a)</sup>	E <sup>(a)</sup>	L <sup>(a)</sup>
------	-------------	-------------	------------	-------	------	------------------	------------------	------------------

**1.0038**

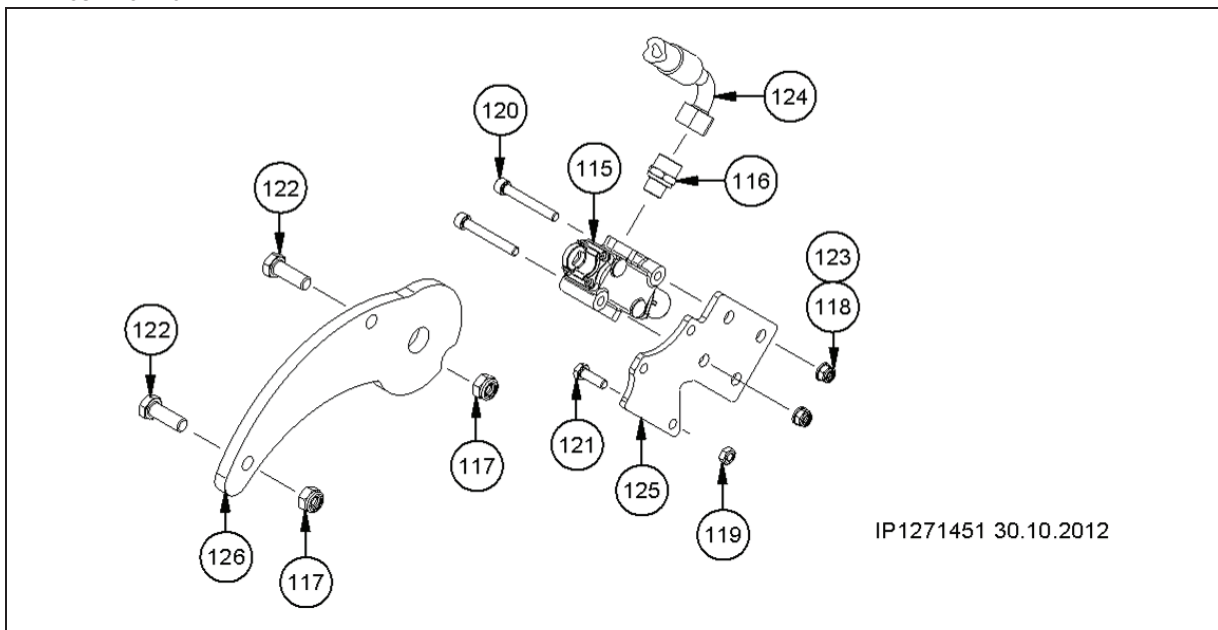
100	DOR.016	O-ring	160 x 7	NBR		1	-	1
101	GFL0165	Adaptor flange	DN 150 – ANSI 6 inch	1.0038 galvanised		1	-	-
	GFL0202	Adaptor flange	DN 150 – ANSI 6 inch	1.0038 painted		-	-	1
102	DFD.054	Flange gasket	DN 150			1	-	1
103	GFL.947	DIN blind flange	DN 150	1.0038 galvanised		1	-	1
	GFL0201	DIN blind flange	DN 150	1.0038 painted		1	-	1
104	NSK.042	Hexagon head bolt	M 12 x 25			4	-	4
105	NMS.007	Hexagon nut	M 20			8	-	8
106	NUS.008	Washer	A 21 x 37 x 3			16	-	16
107	NSK.103	Hexagon head bolt	M 20 x 70			8	-	8

**1.4571**

100	DOR.016	O-ring	160 x 7	NBR		-	1	-
101	GFL0166	Adaptor flange	DN 150 – ANSI 6 inch	1.4571		-	1	-
102	DFD.054	Flange gasket	DN 150			-	1	-
103	GFL.947.E	DIN blind flange	DN 150	1.4571		-	1	-
104	NSK.042.EE	Hexagon head bolt	M 12 x 25	Stainless steel		-	4	-
105	NMS.007.EE	Hexagon nut	M 20	Stainless steel		-	8	-
106	NUS.008.EE	Washer	A 21 x 37 x 3	Stainless steel		-	16	-
107	NSK.103.EE	Hexagon head bolt	M 20 x 70	Stainless steel		-	8	-

(a Design: S = steel, galvanised; E = stainless steel; L = steel, painted

**Safety device option I**  
**Hydraulic reverse valve**  
 Pos. 115-126



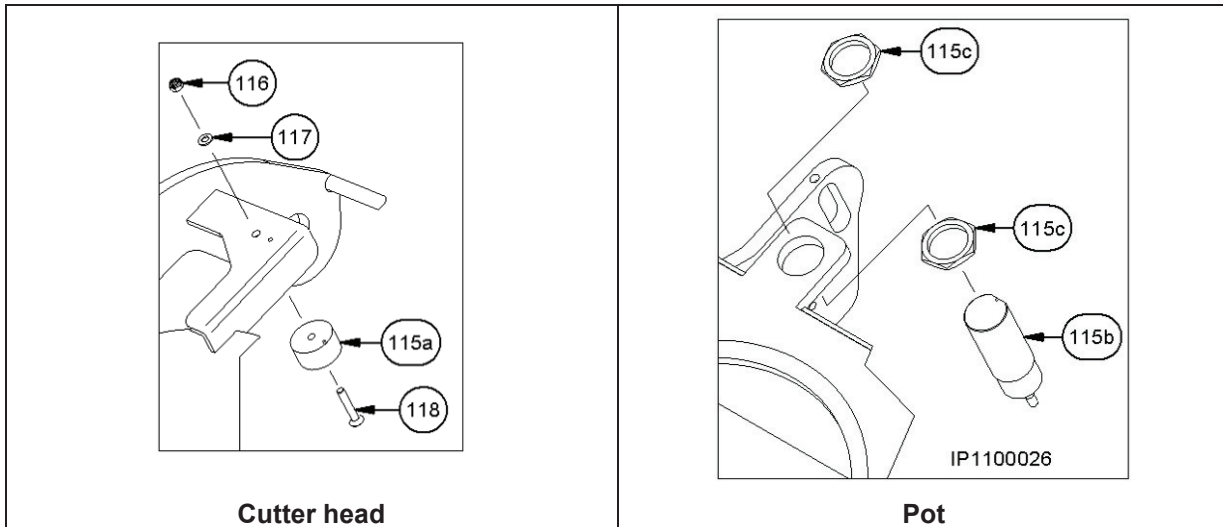
Pos.	Part number	Description	Dimensions	Notes	Rep.	S <sup>(a)</sup>	E <sup>(a)</sup>	L <sup>(a)</sup>
115-126	GAS0118	Mounting kit reverse valve		Pot Inline				(1)
	GAS0114	Mounting kit reverse valve		Cyclone separator				
115	AHV0004	Reverse valve						1
116	NGE.026	Screw connection						1
117	NMK.002	Hexagon nut	M 12					1
118	NMK.004	Hexagon nut	M 8					1
119	NMS.002	Hexagon nut	M 8					1
120	NSI0008	Cylinder head bolt	M 8 x 60					1
121	NSK.019	Hexagon head bolt	M 8 x 25					1
122	NSK.029	Hexagon head bolt	M 12 x 35					1
123	NUS.003	Washer						1
124	THZ.001	Hydraulic hose						1
125	RFL2505	Plate		Pot Inline				1
	RFL2504	Plate		Cyclone separator				
126	RFL2516	Operating sheet		Pot Inline				1
	RFL2506	Operating sheet		Cyclone separator				

(a Design: S = steel, galvanised; E = stainless steel; L = steel, painted

**Safety device option II**

**Safety switch**

**Detail D**



**Position 115-118**

Pos.	Part number	Description	Dimensions	Notes	Rep.	S <sup>(a)</sup>	E <sup>(a)</sup>	L <sup>(a)</sup>
115	SMD0013	Safety switch		Contains pos.115a-115c		1	1	1
115a	-	Magnetic element				(1)	(1)	(1)
115b	-	Sensor with evaluator				(1)	(1)	(1)
115c	-	Adjusting nut				(2)	(2)	(2)

**Steel**

116	NMK.034	Hexagon nut	M 5	DIN 934		1	-	1
117	NUS.120	Washer	5.3 x 10 x 1	DIN 125		1	-	1
118	NSE.020.E	Countersunk head bolt	M 5 x 30	ISO 10642		1	-	1

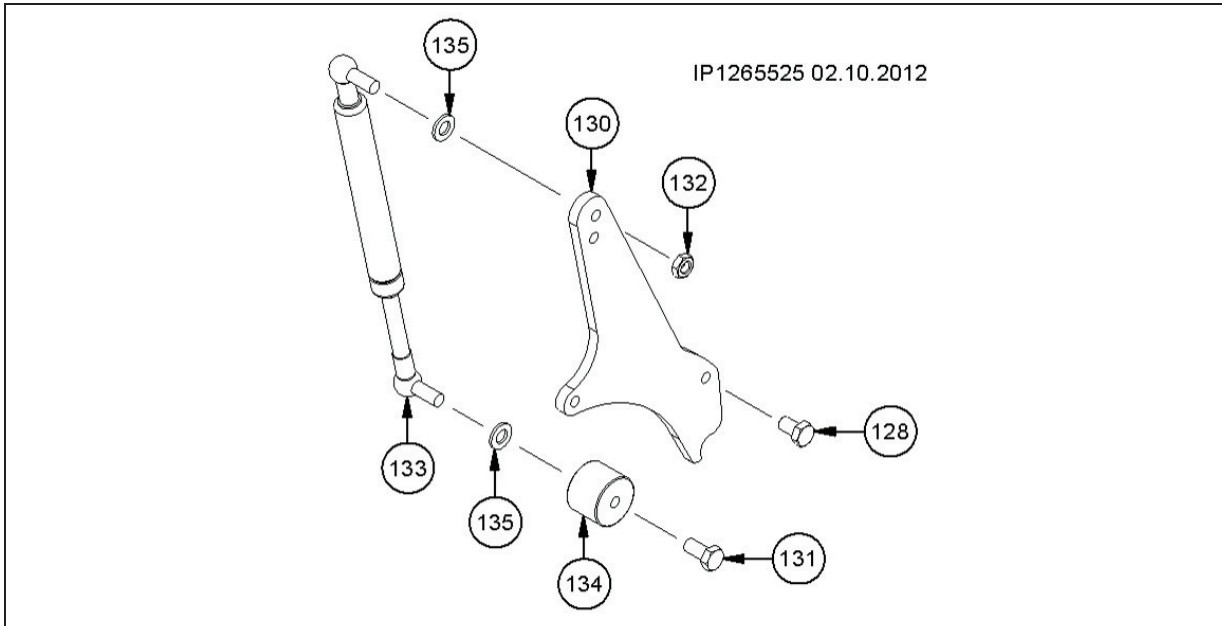
**Stainless steel**

116	NMK.034.EE	Hexagon nut	M 5	DIN 934		-	1	-
117	NUS.120.E	Washer	5.3 x 10 x 1	DIN 125		-	1	-
118	NSE.020.E	Countersunk head bolt	M 5 x 30	ISO 10642		-	1	-

(a Design: S = steel, galvanised; E = stainless steel; L = steel, painted

**Gas spring**

**Detail E**



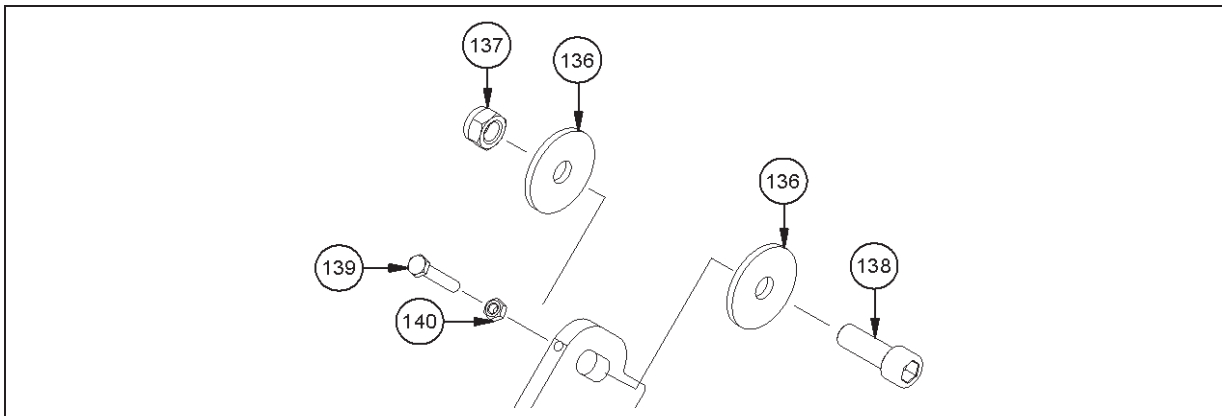
**Pos. 128-135**

Pos.	Part number	Description	Dimensions	Notes	Rep.	S <sup>(a)</sup>	E <sup>(a)</sup>	L <sup>(a)</sup>
<b>1.0038</b>								
128	NSK.042	Hexagon head bolt	M 12 x 25	DIN 933		1	-	1
130	RFL.439	Holder		1.0038 galvanised		1	-	-
	RFL2771	Holder		1.0038 painted		-	-	1
131	NSK.041	Hexagon head bolt	M 12 x 20	DIN 933		2	-	2
132	NMK.057	Hexagon nut	M 12	ISO 4035		1	-	1
133	NFE.030	Gas spring				1		
134	GRS.175	Coupling		Gas spring		1	-	1
135	NUS.005	Washer	A 13 x 24 x 2,5	DIN 125		2	-	2
<b>1.4571</b>								
128	NSK.042.EE	Hexagon head bolt	M 12 x 25	DIN 933		-	1	-
130	RFL.439.E	Holder		1.4571		-	1	-
131	NSK.041.E	Hexagon head bolt	M 12 x 20	DIN 933		-	2	-
132	NMK0009	Hexagon nut	M 12	ISO 4035		-	1	-
133	NFE.030	Gas spring				1		
134	GRS.175.E	Coupling		Gas spring		-	1	-
135	NUS.005.E	Washer	A 13 x 24 x 2,5	DIN 125		-	2	-

(a Design: S = steel, galvanised; E = stainless steel; L = steel, painted

**Pivot**

**Detail G**



**Position 136-140**

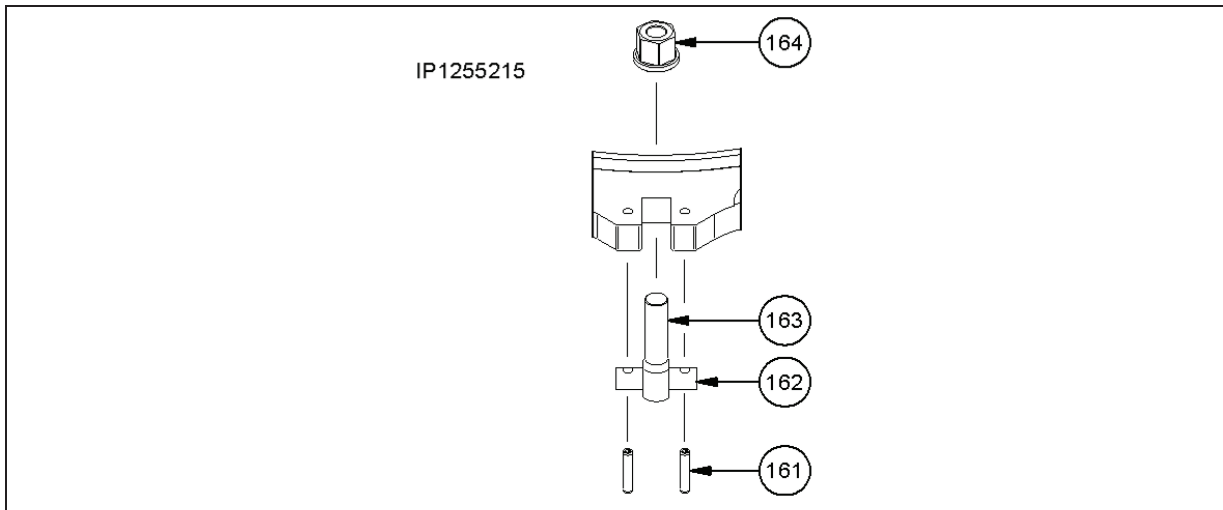
Pos.	Part number	Description	Dimensions	Notes	Rep.	S <sup>(a)</sup>	E <sup>(a)</sup>	L <sup>(a)</sup>
136	NUS.090	Washer	F; 16 x 5 x 60 x 5	DIN 522		4	-	4
	NUS.090.E	Washer	F; 16 x 5 x 60 x 5	DIN 522		-	4	-
137	NMK.007	Hexagon nut	M 16	DIN 985		2	-	2
	NMK.007.EE	Hexagon nut	M 16	DIN 985		-	2	-
138	NSI.045	Cylinder head bolt	M 16 x 45	ISO 4762		2	-	2
	NSI.045.EE	Cylinder head bolt	M 16 x 45	ISO 4762		-	2	-
139	NSK.126	Hexagon head bolt	M 8 x 45	DIN 933		2	-	2
	NSK.203	Hexagon head bolt	M 8 x 45	DIN 933		-	2	-
140	NMS.002	Hexagon nut	M 8	DIN 934-8		2	-	2
	NMS.002.E	Hexagon nut	M 8	DIN 934-8		-	2	-

(a Design: S = steel, galvanised; E = stainless steel; L = steel, painted



**Clamping fastener**





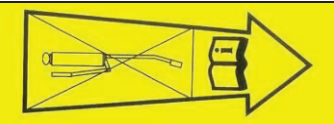
**Detail H**



**Position 160-164**

Pos.	Part number	Description	Dimensions	Notes	Rep.	S <sup>(a)</sup>	E <sup>(a)</sup>	L <sup>(a)</sup>
161	NSP.031.E	Spring pin	6 mm x 30 mm	ISO8752			8	
162	GRS0253	Take-up shaft	M 12			2	-	2
	GRS0280	Take-up shaft	M 12			-	2	-
163	NSH0004	Eye bolt	M 12 x 60	DIN 444		2	-	2
	NSH0006	Eye bolt	M 12 x 60	DIN 444		-	2	-
164	NMK0003	Hexagon nut	M 12			2	-	2
	NMK.019.EE	Hexagon nut	M 12			-	2	-

**Safety sticker**

Pos.	Part number	Description	Dimensions	Notes	Rep.	S <sup>(a)</sup>	E <sup>(a)</sup>	L <sup>(a)</sup>
	VAU.013.EN	Sticker					1	
	VAU.133	Sticker					1	
	VAU.014	Sticker					1	
	VAU.109	Sticker					1	
	VAU.130	Sticker					1	



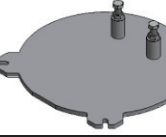
**Cyclone separator**

	VAU.142.EN	Sticker					1	
--	------------	---------	---	--	--	--	---	--




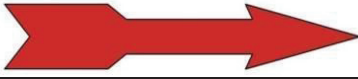
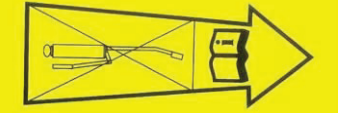
**INLINE**

	VAU.144.EN	Sticker					1	
--	------------	---------	--	--	--	--	---	--

**Tools**

Pos.	Part number	Description	Dimensions	Notes	Rep.	S <sup>(a)</sup>	E <sup>(a)</sup>	L <sup>(a)</sup>
	WKZ.082	Tool for installation the cutting blades					x	
<b>In the case of manual preload</b>								
	GMS.001	Open-end wrench		For preload locking nut				
<b>Blind flange for RotaCut pot (allows for continued flow of the medium while repairs are made to the cutter head)</b>								
	WKZ0484	5000 Inline		1.0038 galvanized				

**Safety sticker**

Pos.	Part number	Description	Dimensions	Notes	Rep.	S <sup>(a)</sup>	E <sup>(a)</sup>	L <sup>(a)</sup>
	VAU.013.EN	Sticker					1	
	VAU.133	Sticker					1	
	VAU.014	Sticker					1	
	VAU.109	Sticker					1	
	VAU.130	Sticker					1	

**Cyclone separator**

	VAU.142.EN	Sticker					1	
--	------------	---------	--	--	--	--	---	--

**INLINE**

	VAU.144.EN	Sticker					1	
--	------------	---------	--	--	--	--	---	--

**Necessary spare parts for blade change**

Pos.	Part number	Description	Dimensions	Notes	Rep.	S <sup>(a)</sup>	E <sup>(a)</sup>	L <sup>(a)</sup>
------	-------------	-------------	------------	-------	------	------------------	------------------	------------------

5000 hydraulic motor

**Steel**

8	GFL.421.N1.M9	Cutting screen	Max. ø 24 mm	Medium; t = 12 mm		1	-	1
	GFL.430.N1.M9	Cutting screen	Max. ø 15 mm	Fine				
	GFL.150.N3.M9	Cutting screen	Max. ø 30 mm	Coarse				
	GFL.543.M9	Cutting screen	Max. ø 4 mm	Honey combs				
	GFL.572.M9	Cutting screen	Max. ø 6 mm	Honey combs				
	GFL.499.N1.M9	Cutting screen	Max. ø 8 mm	Honey combs				
	GFL.511.N1.M9	Cutting screen	Max. ø 10 mm	Honey combs				
	GFL.497.M9	Cutting screen	Max. ø 12 mm	Honey combs				
	GFL.493.M9	Cutting screen	Max. ø 15 mm	Honey combs				

**Stainless steel**

8	GFL.421.N1.E3	Cutting screen	Max. ø 24 mm	Medium; t=12 mm		-	1	-
	GFL.430.N1.E3	Cutting screen	Max. ø 15 mm	Fine				
	GFL.150.N3.E3	Cutting screen	Max. ø 30 mm	Coarse				
	GFL.543.E3	Cutting screen	Max. ø 4 mm	Honey combs				
	GFL.572.E3	Cutting screen	Max. ø 6 mm	Honey combs				
	GFL.499.N1.E3	Cutting screen	Max. ø 8 mm	Honey combs				
	GFL.511.N1.E3	Cutting screen	Max. ø 10 mm	Honey combs				
	GFL.497.E3	Cutting screen	Max. ø 12 mm	Honey combs				
	GFL.493.E3	Cutting screen	Max. ø 15 mm	Honey combs				
		Max. ø = max. free passage						

The cutting screen **pos. 8** can be turned **once** so it doesn't have to be replaced until the next cutting blade change!

11	GSM.005	Cutting blade	8 mm	+ NSP.006		4 3*	-	4 3*
11	GSM.005.E4	Cutting blade; stainless steel	8 mm	+ NSP.030.E + NSP.031.E		4 / 3*		

12	NSP.006	Spring pin	10 x 30	→ GSM.005		4 3*	-	4 3*
12	NSP.030.E	Spring pin	10 x 30	→ GSM.005.E		4 / 3*		
	NSP.031.E	Spring pin	6 x 30			4 / 3*		
13	ZDFD.390.0135	PE cord				4 / 3*		

\* Quantities or parts in case of rotor with 3 wings

## Required spare parts for wear part replacement

Pos.	Part number	Description	Dimensions	Notes	Rep.	S <sup>(a)</sup>	E <sup>(a)</sup>	L <sup>(a)</sup>
2	DOR0022	O-ring	393 x 18	NBR				
	DOR.074.SI	O-ring	407 x 18	MVQ			1	
3	GSW.003	Flywheel					1	
<b>Steel</b>								
6	GAS.019	Internal gap sealing		1.0038		1	-	1
	NSI.006	Cylinder head bolt	M 10 x 30	Included in GAS.019		1	-	1
<b>Steel</b>								
8	GFL.421.N1.M9	Cutting screen	Max. ø 24 mm	Medium; t = 12 mm		1	-	1
	GFL.430.N1.M9	Cutting screen	Max. ø 15 mm	Fine				
	GFL.150.N3.M9	Cutting screen	Max. ø 30 mm	Coarse				
	GFL.543.M9	Cutting screen	Max. ø 4 mm	Honey combs				
	GFL.572.M9	Cutting screen	Max. ø 6 mm	Honey combs				
	GFL.499.N1.M9	Cutting screen	Max. ø 8 mm	Honey combs				
	GFL.511.N1.M9	Cutting screen	Max. ø 10 mm	Honey combs				
	GFL.497.M9	Cutting screen	Max. ø 12 mm	Honey combs				
GFL.493.M9	Cutting screen	Max. ø 15 mm	Honey combs					
<b>Stainless steel</b>								
8	GFL.421.N1.E3	Cutting screen	Max. ø 24 mm	Medium; t=12 mm		-	1	-
	GFL.430.N1.E3	Cutting screen	Max. ø 15 mm	Fine				
	GFL.150.N3.E3	Cutting screen	Max. ø 30 mm	Coarse				
	GFL.543.E3	Cutting screen	Max. ø 4 mm	Honey combs				
	GFL.572.E3	Cutting screen	Max. ø 6 mm	Honey combs				
	GFL.499.N1.E3	Cutting screen	Max. ø 8 mm	Honey combs				
	GFL.511.N1.E3	Cutting screen	Max. ø 10 mm	Honey combs				
	GFL.497.E3	Cutting screen	Max. ø 12 mm	Honey combs				
GFL.493.E3	Cutting screen	Max. ø 15 mm	Honey combs					
		Max. ø = max. free passage						
The cutting screen <b>pos. 8</b> can be turned <b>once</b> so it doesn't have to be replaced until the next cutting blade change!								
9	GRS.203.EE	Clamp bolt				3	3	3
	GRS.202	Spring pin				3	-	3
	GRS.202.EE	Spring pin				-	3	-
10	GFM.021.N2	Blade rotor		4 wings; groove 8 mm		1	1	1
	GFM.003.N2	Blade rotor		3 wings; groove 8 mm				
11	GSM.005	Cutting blade	8 mm	+ NSP.006		4 3*	-	4 3*
11	GSM.005.E4	Cutting blade; stainless steel	8 mm	+ NSP.030.E + NSP.031.E		4 / 3*		
12	NSP.006	Spring pin	10 x 30	→ GSM.005		4 3*	-	4 3*
12	NSP.030.E	Spring pin	10 x 30	→ GSM.005.E		4 / 3*		
	NSP.031.E	Spring pin	6 x 30			4 / 3*		
13	ZDFD.390.0135	PE cord				4 / 3*		

\* Quantities or parts in case of rotor with 3 wings

(a Design: S = steel, galvanised; E = stainless steel; L = steel, painted

**VOGELSANG****Hugo Vogelsang Maschinenbau GmbH**

Holthöge 10-14  
49632 Essen/Oldb.

Phone: +49 (0) 54 34 83 0  
Fax: +49 (0) 54 34 83 10

vogelsang-gmbh.com  
info@vogelsang-gmbh.com

**ENGINEERED TO WORK**

**Australien**  
**Vogelsang Pty. Ltd.**  
vogelsang.com.au

**Indien**  
**Vogelsang India Private Limited**  
vogelsangindia.com

**Russland**  
**Vogelsang Russland**  
vogelsang.ru

**Brasilien**  
**Vogelsang Brasil Ltda.**  
vogelsang.com.br

**Irland**  
**Vogelsang Ireland**  
vogelsang.ie

**Schweden**  
**Vogelsang Sverige AB**  
vogelsang.se

**China**  
**Vogelsang Mechanical Engineering (Shanghai) Co., Ltd.**  
vogelsang.com.cn

**Italien**  
**Vogelsang Italy Srl**  
vogelsang-srl.it

**Spanien**  
**Vogelsang S.L.**  
vogelsang.es

**Dänemark**  
**Vogelsang A/S**  
vogelsang-as.dk

**Malaysia**  
**Vogelsang Malaysia**  
vogelsang.info

**Südkorea**  
**Vogelsang Korea Co., Ltd.**  
vogelsang.co.kr

**Deutschland - Niederlassung Ost**  
**Vogelsang Lutherstadt Eisleben**  
vogelsang-gmbh.com

**Mexico**  
**Vogelsang De México S.de R.L. de CV**  
vogelsang.mx

**Tschechische Republik**  
**Vogelsang CZ s.r.o.**  
vogelsang-czech.cz

**Finnland**  
**Vogelsang Oy**  
vogelsang.fi

**Polen**  
**Vogelsang Poland Sp. z o.o.**  
vogelsang.pl

**USA**  
**Vogelsang USA Ltd.**  
vogelsangusa.com

**Frankreich**  
**Vogelsang France S.A.R.L.**  
vogelsang.fr

**Österreich**  
**Vogelsang Austria GmbH**  
vogelsang-austria.at

**Großbritannien**  
**Vogelsang Ltd.**  
vogelsang.co.uk

**Rumänien**  
**Vogelsang Romania SRL**  
vogelsang.ro